

## Anti-CD11c Polyclonal Antibody

### Product Details

Ig Type:	IgG
Reactivity:	Human (predicted:Mouse,Rat,Dog)
Molecular Weight:	Theoretical: 126 kDa. Actual: 145-150 kDa.
Purification:	Protein A purified

### Applications

1. Blank control (blue): U937 cells (fixed with 2% paraformaldehyde (10 min)). Primary Antibody: Rabbit Anti-CD11c antibody (TMAB-00331), Dilution: 1  $\mu$ g in 100  $\mu$ L 1X PBS containing 0.5% BSA; Isotype Control Antibody: Rabbit IgG (orange) used under the same conditions); Secondary Antibody: Goat anti-rabbit IgG-Pe (white blue), Dilution: 1:200 in 1 X PBS containing 0.5% BSA.

2. Blank control: Raw264.7. Primary Antibody (green line): Rabbit Anti-CD11c antibody (TMAB-00331)

Dilution: 1  $\mu$ g/10<sup>6</sup> cells;

Isotype Control Antibody (orange line): Rabbit IgG.

Secondary Antibody: Goat anti-rabbit IgG-AF647

Dilution: 1  $\mu$ g/test.

Protocol

Verified Activity: The cells were incubated in 5% BSA to block non-specific protein-protein interactions for 30 min at room temperature. Cells stained with Primary Antibody for 30 min at room temperature. The secondary antibody used for 40 min at room temperature.

3. Blank control: Raw264.7. Primary Antibody (green line): Rabbit Anti-CD11c antibody (TMAB-00331)

Dilution: 1  $\mu$ g/10<sup>6</sup> cells;

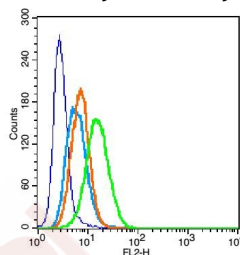
Isotype Control Antibody (orange line): Rabbit IgG.

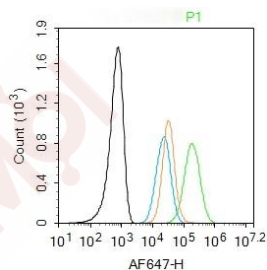
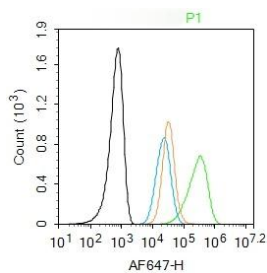
Secondary Antibody: Goat anti-rabbit IgG-AF647

Dilution: 1  $\mu$ g/test.

Protocol

The cells were incubated in 5% BSA to block non-specific protein-protein interactions for 30 min at room temperature. Cells stained with Primary Antibody for 30 min at room temperature. The secondary antibody used for 40 min at room temperature.





Application: FCM  
 Recommended FCM: 1µg/Test

**Properties**

Stability & Storage: Store at -20°C or -80°C for 12 months. Avoid repeated freeze-thaw cycles.  
 Shipping: Shipping with blue ice.

**Antigen Details**

Immunogen: KLH conjugated synthetic peptide: human Integrin Alpha X  
 Antigen Species: Human  
 Gene ID: 3687  
 Uniprot ID: P20702  
 Synonyms: SLEB6;integrin aX;leukocyte adhesion glycoprotein p150, 95 alpha chain;Integrin alpha-X; CD11C(p150) alpha polypeptide;leukocyte adhesion receptor p150, 95;integrin alpha-X precursor;complement receptor 4;CD11 antigen-like family member C;ITAX;ITGAX  
 Biology Area: Monocytic Lineage,Dendritic Cell Lineage,T Lymphocytic Lineage,Alpha,Adhesion

**Research Background**

This gene encodes the integrin alpha X chain protein. Integrins are heterodimeric integral membrane proteins composed of an alpha chain and a beta chain. This protein combines with the beta 2 chain (ITGB2) to form a leukocyte-specific integrin referred to as inactivated-C3b (iC3b) receptor 4 (CR4). The alpha X beta 2 complex seems to overlap the properties of the alpha M beta 2 integrin in the adherence of neutrophils and monocytes to stimulated endothelium cells, and in the phagocytosis of complement coated particles. [provided by RefSeq].

**Inhibitor · Natural Compounds · Compound Libraries · Recombinant Proteins**

This product is for Research Use Only · Not for Human or Veterinary or Therapeutic Use

Tel:781-999-4286 E\_mail:info@targetmol.com Address:34 Washington Street,Wellesley Hills,MA 02481