

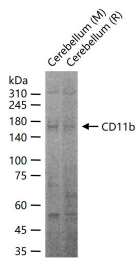
## Anti-CD11b Polyclonal Antibody

### Product Details

Ig Type:	IgG
Reactivity:	Human,Mouse,Rat
Molecular Weight:	Theoretical: 125 kDa. Actual: 175 kDa.
Purification:	Protein A purified

### Applications

Verified Activity: 25 µg total protein per Lane of various lysates probed with CD11b polyclonal antibody, unconjugated (TMAB-00330) at 1:1000 dilution and 4°C overnight incubation. Followed by conjugated secondary antibody incubation at RT for 60 min.



Application:	WB
Recommended	WB: 1:500-2000

### Properties

Stability & Storage:	Store at -20°C or -80°C for 12 months. Avoid repeated freeze-thaw cycles.
Shipping:	Shipping with blue ice.

### Antigen Details

Immunogen:	KLH conjugated synthetic peptide: mouse CD11b
Antigen Species:	Mouse
Uniprot ID:	P05555
Synonyms:	CD11 b;CR-3 alpha chain;CD11 antigen-like family member B;Leukocyte adhesion receptor MO1;CD11B;Integrin alpha-M;Cell surface glycoprotein MAC-1 subunit alpha;ITGAM;ITAM;CR3A;Neutrophil adherence receptor
Biology Area:	Microglia marker,Alpha,Murine Lineage Negative,B Lymphocytic Lineage,NK Cell Lineage,T Lymphocytic Lineage,Monocytic Lineage,Neutrophil Lineage,Negative Markers,Glial

### Research Background

This gene encodes the integrin alpha M chain. Integrins are heterodimeric integral membrane proteins composed of an alpha chain and a beta chain. This I-domain containing alpha integrin combines with the beta 2 chain (ITGB2) to form a leukocyte-specific integrin referred to as macrophage receptor 1 ('Mac-1'), or inactivated-C3b (iC3b) receptor 3 ('CR3'). The alpha M beta 2 integrin is important in the adherence of neutrophils and monocytes to stimulated endothelium, and also in the phagocytosis of complement coated particles. Multiple transcript variants encoding

different isoforms have been found for this gene. [provided by RefSeq, Mar 2009]

**Inhibitor · Natural Compounds · Compound Libraries · Recombinant Proteins**

This product is for Research Use Only · Not for Human or Veterinary or Therapeutic Use

Tel:781-999-4286 E\_mail:info@targetmol.com Address:34 Washington Street,Wellesley Hills,MA 02481