

## Anti-CD117 Polyclonal Antibody 2

### Product Details

Ig Type: IgG  
 Reactivity: Human, Mouse, Rat (predicted: Pig, Cow, Horse, Sheep)  
 Molecular Weight: Theoretical: 105 kDa. Actual: 145 kDa.  
 Purification: Protein A purified

### Applications

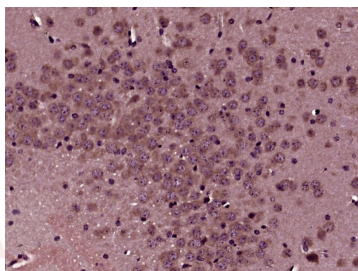
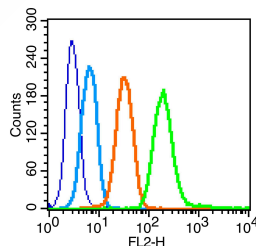
1. Blank control (blue line): K562 (blue).  
 Primary Antibody (green line): Rabbit Anti-c-Kit antibody (TMAB-00329)  
 Dilution: 1 µg/10<sup>6</sup> cells;  
 Isotype Control Antibody (orange line): Rabbit IgG.  
 Secondary Antibody (white blue line): Goat anti-rabbit IgG-PE  
 Dilution: 1 µg/test.

#### Protocol

#### Verified Activity:

The cells were fixed with 70% ethanol (overnight at 4°C) and then permeabilized with 0.1% PBS-Tween for 20 min at room temperature. Cells stained with Primary Antibody for 30 min at room temperature. The cells were then incubated in 1 X PBS/2% BSA/10% goat serum to block non-specific protein-protein interactions followed by the antibody for 15 min at room temperature. The secondary antibody used for 40 min at room temperature.

2. Paraformaldehyde-fixed, paraffin embedded (Mouse brain); Antigen retrieval by boiling in sodium citrate buffer (pH6.0) for 15 min; Block endogenous peroxidase by 3% hydrogen peroxide for 20 min; Blocking buffer (normal goat serum) at 37°C for 30 min; Antibody incubation with (c-Kit) Polyclonal Antibody, Unconjugated (TMAB-00329) at 1:400 overnight at 4°C, followed by operating according to SP Kit (Rabbit) instructions and DAB staining.



Application: FCM, IF, IHC-Fr, IHC-P  
 Recommended: IHC-P: 1:100-500; IHC-Fr: 1:100-500; IF: 1:100-500; FCM: 1µg/Test

### Properties

Stability & Storage: Store at -20°C or -80°C for 12 months. Avoid repeated freeze-thaw cycles.

Shipping: Shipping with blue ice.

---

### Antigen Details

Immunogen: KLH conjugated synthetic peptide: human KIT

Antigen Species: Human

Gene ID: 3815

Uniprot ID: P10721

Synonyms: CD117;SCFR;ckit;PBT;KIT;EC 2.7.10;EC 2.7.10.1;c-kit

Biology Area: Growth factor receptors, Receptor tyrosine kinases, Hematopoietic system development, Germ cell markers, Cytokines, Tyrosine Kinase Receptors, Receptor Tyrosine Kinases, Embryonic Germ Cells, HSC markers, Mast Cell Lineage, Surface Molecules, Tumor Associated

---

### Research Background

c-Kit is a transmembrane tyrosine kinase encoded by the cKit proto oncogene. c-Kit acts to regulate a variety of biological responses including cell proliferation, apoptosis, chemotaxis and adhesion. Ligand binding to the extracellular domain leads to autophosphorylation on several tyrosine residues within the cytoplasmic domain, and activation. Mutations in c-Kit have been found to be important for tumor growth and progression in a variety of cancers including mast cell diseases, gastrointestinal stromal tumor, acute myeloid leukemia, Ewing sarcoma and lung cancer. Phosphorylation at tyrosine 721 of c-Kit allows binding and activation of PI3 kinase.

**Inhibitor · Natural Compounds · Compound Libraries · Recombinant Proteins**

This product is for Research Use Only · Not for Human or Veterinary or Therapeutic Use

Tel: 781-999-4286 E\_mail: info@targetmol.com Address: 34 Washington Street, Wellesley Hills, MA 02481