

Anti-CCR5 Polyclonal Antibody

Product Details

Ig Type: IgG
Reactivity: Human
Molecular Weight: Theoretical: 40 kDa. Actual: 43 kDa.
Purification: Protein A purified

Applications

Sample:

Lane 1: Human THP-1 cell lysates

Lane 2: Human U937 cell lysates

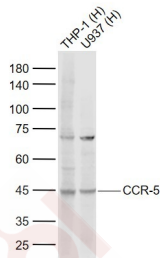
Verified Activity:

Primary: Anti-CCR-5 (TMAB-00325) at 1/1000 dilution

Secondary: IRDye800CW Goat Anti-Rabbit IgG at 1/20000 dilution

Predicted band size: 40 kDa

Observed band size: 43 kDa



Application: WB

Recommended WB: 1:500-2000

Properties

Stability & Storage: Store at -20°C or -80°C for 12 months. Avoid repeated freeze-thaw cycles.

Shipping: Shipping with blue ice.

Antigen Details

Immunogen: KLH conjugated synthetic peptide: human CCR-5

Antigen Species: Human

Gene ID: 1234

Uniprot ID: P51681

Synonyms: CCR-5; CD195; CKR5; CCCR5; IDDM22; CC-CKR-5; CKR-5; CMKBR5

Biology Area: GPCR, Chemokines, HIV-related, Beta Chemokine Rec. (CCR), Macrophage / Inflamm., Host Virus Interaction, Alzheimer's disease, GPCR

Research Background

This gene encodes a member of the beta chemokine receptor family, which is predicted to be a seven transmembrane protein similar to G protein-coupled receptors. This protein is expressed by T cells and

A DRUG SCREENING EXPERT

macrophages, and is known to be an important co-receptor for macrophage-tropic virus, including HIV, to enter host cells. Defective alleles of this gene have been associated with the HIV infection resistance. The ligands of this receptor include monocyte chemoattractant protein 2 (MCP-2), macrophage inflammatory protein 1 alpha (MIP-1 alpha), macrophage inflammatory protein 1 beta (MIP-1 beta) and regulated on activation normal T expressed and secreted protein (RANTES). Expression of this gene was also detected in a promyeloblastic cell line, suggesting that this protein may play a role in granulocyte lineage proliferation and differentiation. This gene is located at the chemokine receptor gene cluster region. Two transcript variants encoding the same protein have been found for this gene. [provided by RefSeq].

Inhibitor · Natural Compounds · Compound Libraries · Recombinant Proteins

This product is for Research Use Only · Not for Human or Veterinary or Therapeutic Use

Tel:781-999-4286 E_mail:info@targetmol.com Address:34 Washington Street,Wellesley Hills,MA 02481