

Anti-CCR2/CD192 Polyclonal Antibody 2

Product Details

Ig Type: IgG
 Reactivity: Mouse,Rat (predicted:Human)
 Molecular Weight: Theoretical: 41 kDa.
 Purification: Protein A purified

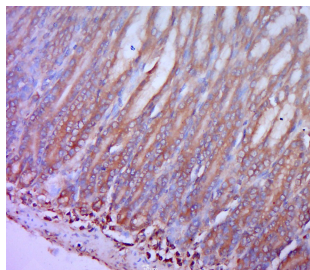
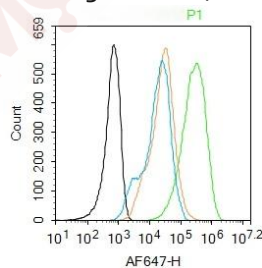
Applications

1. Blank control: Raw264.7. Primary Antibody (green line): Rabbit Anti-CCR-2 antibody (TMAB-00323)
 Dilution: 1 µg/10⁶ cells;
 Isotype Control Antibody (orange line): Rabbit IgG.
 Secondary Antibody: Goat anti-rabbit IgG-AF647
 Dilution: 1 µg/test.

Protocol

Verified Activity: The cells were incubated in 5% BSA to block non-specific protein-protein interactions for 30 min at room temperature. Cells stained with Primary Antibody for 30 min at room temperature. The secondary antibody used for 40 min at room temperature.

2. Paraformaldehyde-fixed, paraffin embedded (rat stomach tissue); Antigen retrieval by boiling in sodium citrate buffer (pH6.0) for 15 min; Block endogenous peroxidase by 3% hydrogen peroxide for 20 min; Blocking buffer (normal goat serum) at 37°C for 30 min; Antibody incubation with (CCR-2) Polyclonal Antibody, Unconjugated (TMAB-00323) at 1:400 overnight at 4°C, followed by a conjugated secondary for 20 min and DAB staining.



Application: FCM,IF,IHC-Fr,IHC-P

Recommended IHC-P: 1:100-500; IHC-Fr: 1:100-500; IF: 1:100-500; FCM: 1ug/Test

Properties

Stability & Storage: Store at -20°C or -80°C for 12 months. Avoid repeated freeze-thaw cycles.

Shipping: Shipping with blue ice.

Antigen Details

Immunogen: KLH conjugated synthetic peptide: mouse CCR-2

Antigen Species: Mouse

Gene ID: 12772

Uniprot ID: P51683

Synonyms: CCR2B;MCP-1-R;CKR2;CKR2A;CCR2A;CC-CKR-2;CKR2B;CMKBR2;PCLUD;CCR-2;FLJ78302;CD192

Biology Area: GPCR,Chemokines,Beta Chemokine Rec. (CCR),Macrophage / Inflamm.,Host Virus Interaction, GPCR,STATs

Research Background

This gene encodes two isoforms of a receptor for monocyte chemoattractant protein-1, a chemokine which specifically mediates monocyte chemotaxis. Monocyte chemoattractant protein-1 is involved in monocyte infiltration in inflammatory diseases such as rheumatoid arthritis as well as in the inflammatory response against tumors. The receptors encoded by this gene mediate agonist-dependent calcium mobilization and inhibition of adenylyl cyclase. This gene is located in the chemokine receptor gene cluster region. Two alternatively spliced transcript variants are expressed by the gene. [provided by RefSeq, Mar 2009].

Inhibitor · Natural Compounds · Compound Libraries · Recombinant Proteins

This product is for Research Use Only · Not for Human or Veterinary or Therapeutic Use

Tel:781-999-4286 E_mail:info@targetmol.com Address:34 Washington Street,Wellesley Hills,MA 02481