

Anti-CCR2/CD192 Polyclonal Antibody

Product Details

Ig Type:	IgG
Reactivity:	Human (predicted:Mouse,Rat,Dog,Horse)
Molecular Weight:	Theoretical: 41 kDa.
Purification:	Protein A purified

Applications

1. Blank control (blue line): Hela (blue).
 Primary Antibody (green line): Rabbit Anti-CCR-2 antibody (TMAB-00322)
 Dilution: 0.2 $\mu\text{g}/10^6$ cells;
 Isotype Control Antibody (orange line): Rabbit IgG.
 Secondary Antibody (white blue line): Goat anti-rabbit IgG-PE
 Dilution: 1 $\mu\text{g}/\text{test}$.

Protocol

The cells were fixed with 80% methanol for 5 min at -20°C (The cells were fixed with 2% paraformaldehyde for 10 min at room temperature). Cells stained with Primary Antibody for 30 min at room temperature. The cells were then incubated in 1 X PBS/2% BSA/10% goat serum to block non-specific protein-protein interactions followed by the antibody for 15 min at room temperature. The secondary antibody used for 40 min at room temperature.

2. Tissue/cell: human lung carcinoma; 4% Paraformaldehyde-fixed and paraffin-embedded;
 Antigen retrieval: citrate buffer (0.01M, pH6.0), Boiling bathing for 15 min; Block endogenous peroxidase by 3% Hydrogen peroxide for 30 min; Blocking buffer (normal goat serum) at 37°C for 20 min;

Verified Activity:

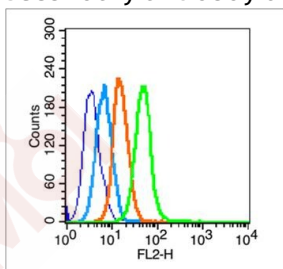
Incubation: Anti-CCR2 Polyclonal Antibody, Unconjugated (TMAB-00322) 1:200, overnight at 4°C, followed by conjugation to the secondary antibody and DAb staining.

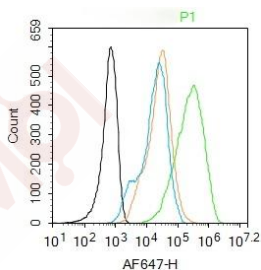
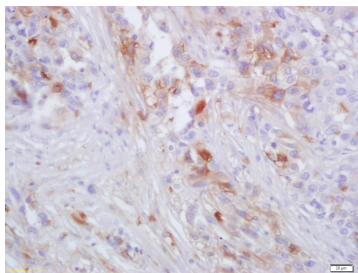
3. Blank control: Raw264.7. Primary Antibody (green line): Rabbit Anti-CCR-2 antibody (TMAB-00322)

Dilution: 1 $\mu\text{g}/10^6$ cells;
 Isotype Control Antibody (orange line): Rabbit IgG.
 Secondary Antibody: Goat anti-rabbit IgG-AF647
 Dilution: 1 $\mu\text{g}/\text{test}$.

Protocol

The cells were incubated in 5% BSA to block non-specific protein-protein interactions for 30 min at room temperature. Cells stained with Primary Antibody for 30 min at room temperature. The secondary antibody used for 40 min at room temperature.





Application: FCM,IF,IHC-Fr,IHC-P

Recommended IHC-P: 1:100-500; IHC-Fr: 1:100-500; IF: 1:100-500; FCM: 0.2µg/Test

Properties

Stability & Storage: Store at -20°C or -80°C for 12 months. Avoid repeated freeze-thaw cycles.

Shipping: Shipping with blue ice.

Antigen Details

Immunogen: KLH conjugated synthetic peptide: human CCR-2

Antigen Species: Human

Gene ID: 729230

Uniprot ID: P41597

Synonyms: CD192;CMKBR2;CCR2A;MCP-1-R;CC-CKR-2;CCR-2;CKR2;CKR2B;PCLUD;CCR2B;CKR2A;FLJ78302

Biology Area: GPCR,Chemokines,Beta Chemokine Rec. (CCR),Macrophage / Inflamm.,Host Virus Interaction, GPCR,STATs

Research Background

This gene encodes two isoforms of a receptor for monocyte chemoattractant protein-1, a chemokine which specifically mediates monocyte chemotaxis. Monocyte chemoattractant protein-1 is involved in monocyte infiltration in inflammatory diseases such as rheumatoid arthritis as well as in the inflammatory response against tumors. The receptors encoded by this gene mediate agonist-dependent calcium mobilization and inhibition of adenylyl cyclase. This gene is located in the chemokine receptor gene cluster region. Two alternatively spliced transcript variants are expressed by the gene. [provided by RefSeq, Mar 2009].

Inhibitor · Natural Compounds · Compound Libraries · Recombinant Proteins

This product is for Research Use Only · Not for Human or Veterinary or Therapeutic Use

Tel:781-999-4286 E_mail:info@targetmol.com Address:34 Washington Street,Wellesley Hills,MA 02481