

## Anti-CCNE1 Polyclonal Antibody

## Product Details

Ig Type:	IgG
Reactivity:	Human,Mouse,Rat
Molecular Weight:	Theoretical: 45 kDa. Actual: 50 kDa.
Purification:	Protein A purified

## Applications

1. Tissue/cell: rat testis tissue;4% Paraformaldehyde-fixed and paraffin-embedded; Antigen retrieval: citrate buffer (0.01M, pH6.0), Boiling bathing for 15 min; Blocking buffer (normal goat serum) at 37°C for 20 min; Incubation: Anti-Cyclin E Polyclonal Antibody, Unconjugated (TMAB-00319) 1:200, overnight at 4°C; The secondary antibody was Goat Anti-Rabbit IgG, Cy3 conjugated used at 1:200 dilution for 40 minutes at 37°C.
2. Tissue/cell: human laryngocarcinoma; 4% Paraformaldehyde-fixed and paraffin-embedded; Antigen retrieval: citrate buffer (0.01M, pH6.0), Boiling bathing for 15 min; Block endogenous peroxidase by 3% Hydrogen peroxide for 30 min; Blocking buffer (normal goat serum) at 37°C for 20 min; Incubation: Anti-Cyclin-E Polyclonal Antibody, Unconjugated (TMAB-00319) 1:200, overnight at 4°C, followed by conjugation to the secondary antibody and DAb staining.
3. Cell: NIH/3T3  
Concentration:1:100  
Host/Isotype: Rabbit/IgG  
Flow cytometric analysis of primary antibody (Cat#: TMAB-00319) on NIH/3T3 (green) compared with Rabbit IgG isotype control in the absence of primary antibody (blue) followed by Alexa Fluor 488-conjugated goat anti-rabbit Igg (H+L) secondary antibody.
4. Blank control (blue line): Mouse spleen cells (blue).  
Primary Antibody (green line): Rabbit Anti-Cyclin E1 antibody (TMAB-00319)  
Dilution: 1 µg/10<sup>6</sup> cells;  
Isotype Control Antibody (orange line): Rabbit IgG.  
Secondary Antibody (white blue line): Goat anti-rabbit IgG-FITC  
Dilution: 1 µg/test.  
Protocol  
The cells were fixed with 70% ethanol (overnight at 4°C) and then permeabilized with 0.1% PBS-Tween for 20 min at room temperature. Cells stained with Primary Antibody for 30 min at room temperature. The cells were then incubated in 1 X PBS/2% BSA/10% goat serum to block non-specific protein-protein interactions followed by the antibody for 15 min at room temperature. The secondary antibody used for 40 min at room temperature.
5. Blank control: MCF7. Primary Antibody (green line): Rabbit Anti-Cyclin E1 antibody (TMAB-00319)  
Dilution: 2 µg/10<sup>6</sup> cells;  
Isotype Control Antibody (orange line): Rabbit IgG.  
Secondary Antibody: Goat anti-rabbit IgG-AF647  
Dilution: 1 µg/test.  
Protocol  
The cells were fixed with 4% PFA (10 min at room temperature) and then permeabilized with

Verified Activity:

90% ice-cold methanol for 20 min at -20°C. The cells were then incubated in 5% BSA to block non-specific protein-protein interactions for 30 min at room temperature. Cells stained with Primary Antibody for 30 min at room temperature. The secondary antibody used for 40 min at room temperature.

6. Sample:

LOVO (Human) Cell Lysate at 30 µg

Thymus (Mouse) Lysate at 40 µg

U2os (Human) Cell Lysate at 30 µg

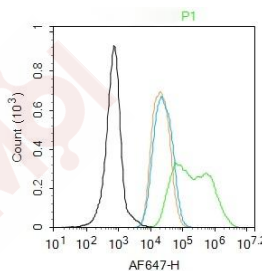
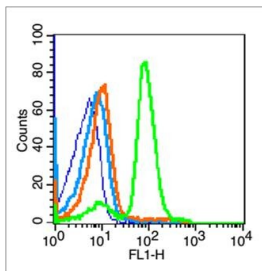
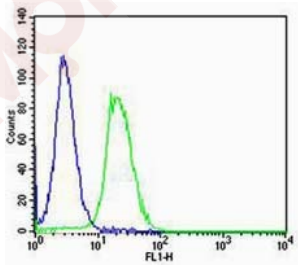
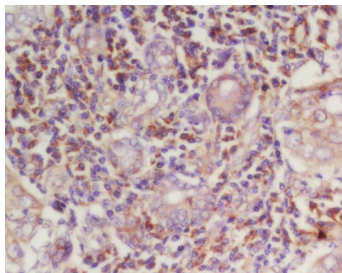
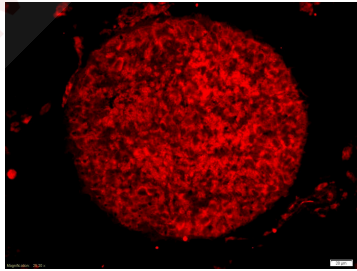
K562 (Human) Cell Lysate at 30 µg

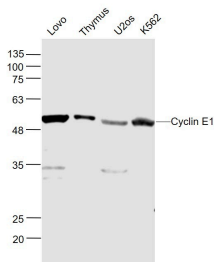
Primary: Anti-Cyclin E1 (TMAB-00319) at 1/1000 dilution

Secondary: IRDye800CW Goat Anti-Rabbit IgG at 1/20000 dilution

Predicted band size: 45 kDa

Observed band size: 50 kDa





Application: FCM,IF,IHC-Fr,IHC-P,WB

Recommended WB: 1:500-2000; IHC-P: 1:100-500; IHC-Fr: 1:100-500; IF: 1:100-500; FCM: 1µg/Test

### Properties

Stability & Storage: Store at -20°C or -80°C for 12 months. Avoid repeated freeze-thaw cycles.

Shipping: Shipping with blue ice.

### Antigen Details

Immunogen: KLH conjugated synthetic peptide: rat Cyclin E

Antigen Species: Rat

Gene ID: 25729

Uniprot ID: P39949

Synonyms: cyclin E1;CCNE

Biology Area: Cyclin E family,Cyclins,Cyclin E Family,Cyclin E Family

### Research Background

Cyclin E is a regulatory subunit of Cdk2 and controls G1 / S transition during the mammalian cell cycle. Multiple isoforms of Cyclin E are only expressed in tumors but not in normal tissue, suggesting a post transcriptional regulation of Cyclin E. In vitro analyses indicated that these truncated variant isoforms of Cyclin E are able to phosphorylate histone H1. Alterations in the Cyclin E protein have been implicated as indicators of worse prognosis in various cancers.

**Inhibitor · Natural Compounds · Compound Libraries · Recombinant Proteins**

This product is for Research Use Only · Not for Human or Veterinary or Therapeutic Use

Tel:781-999-4286 E\_mail:info@targetmol.com Address:34 Washington Street,Wellesley Hills,MA 02481