

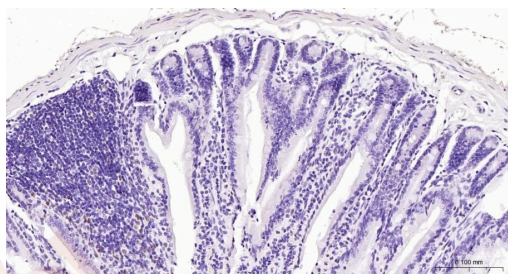
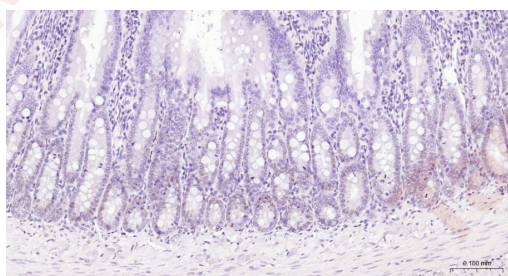
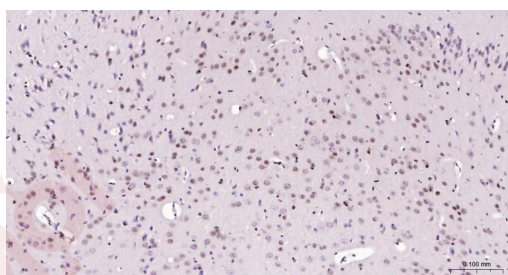
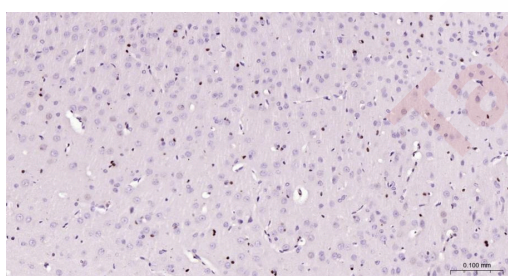
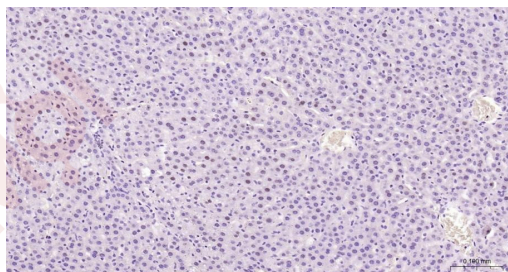
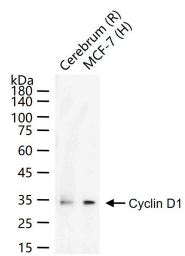
Anti-CCND1 Polyclonal Antibody

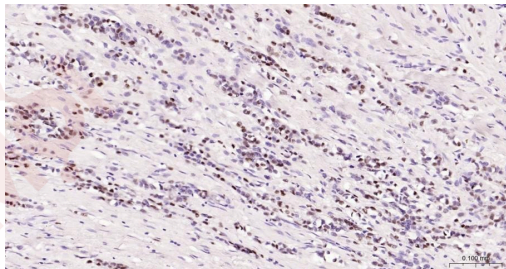
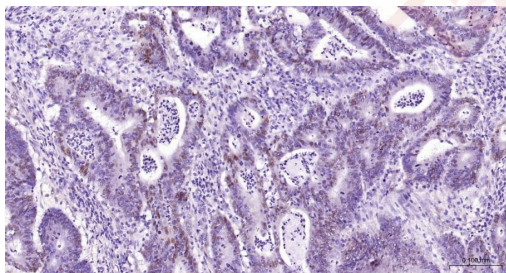
Product Details

Ig Type:	IgG
Reactivity:	Human,Mouse,Rat
Molecular Weight:	Theoretical: 32 kDa. Actual: 34 kDa.
Purification:	Protein A purified

Applications

1. 25 µg total protein per Lane of various lysates probed with Cyclin D1 polyclonal antibody, unconjugated (TMAB-00317) at 1:2000 dilution and 4°C overnight incubation. Followed by conjugated secondary antibody incubation at RT for 60 min.
 2. Paraformaldehyde-fixed, paraffin embedded Rat Liver; Antigen retrieval by boiling in sodium citrate buffer (pH6.0) for 15 min; Antibody incubation with Cyclin D1 Polyclonal Antibody, Unconjugated (TMAB-00317) at 1:200 overnight at 4°C, followed by conjugation to the secondary antibody and DAB staining.
 3. Paraformaldehyde-fixed, paraffin embedded Rat Cerebrum; Antigen retrieval by boiling in sodium citrate buffer (pH6.0) for 15 min; Antibody incubation with Cyclin D1 Polyclonal Antibody, Unconjugated (TMAB-00317) at 1:200 overnight at 4°C, followed by conjugation to the secondary antibody and DAB staining.
 4. Paraformaldehyde-fixed, paraffin embedded Mouse Cerebrum; Antigen retrieval by boiling in sodium citrate buffer (pH6.0) for 15 min; Antibody incubation with Cyclin D1 Polyclonal Antibody, Unconjugated (TMAB-00317) at 1:200 overnight at 4°C, followed by conjugation to the secondary antibody and DAB staining.
 5. Paraformaldehyde-fixed, paraffin embedded Rat Small Intestine; Antigen retrieval by boiling in sodium citrate buffer (pH6.0) for 15 min; Antibody incubation with Cyclin D1 Polyclonal Antibody, Unconjugated (TMAB-00317) at 1:200 overnight at 4°C, followed by conjugation to the secondary antibody and DAB staining.
 6. Paraformaldehyde-fixed, paraffin embedded Mouse Small Intestine; Antigen retrieval by boiling in sodium citrate buffer (pH6.0) for 15 min; Antibody incubation with Cyclin D1 Polyclonal Antibody, Unconjugated (TMAB-00317) at 1:200 overnight at 4°C, followed by conjugation to the secondary antibody and DAB staining.
 7. Paraformaldehyde-fixed, paraffin embedded Human Colon Cancer; Antigen retrieval by boiling in sodium citrate buffer (pH6.0) for 15 min; Antibody incubation with Cyclin D1 Polyclonal Antibody, Unconjugated (TMAB-00317) at 1:200 overnight at 4°C, followed by conjugation to the secondary antibody and DAB staining.
 8. Paraformaldehyde-fixed, paraffin embedded Human Breast Cancer; Antigen retrieval by boiling in sodium citrate buffer (pH6.0) for 15 min; Antibody incubation with Cyclin D1 Polyclonal Antibody, Unconjugated (TMAB-00317) at 1:200 overnight at 4°C, followed by conjugation to the secondary antibody and DAB staining.
- Verified Activity:





Application: FCM,ICC/IF,IF,IHC-Fr,IHC-P,WB
Recommended FCM=1:50-100; ICC/IF=1:50-200; IF=1:50-200; IHC-Fr=1:50-200; IHC-P=1:50-200; WB=1:500-2000

Properties

Stability & Storage: Store at -20°C or -80°C for 12 months. Avoid repeated freeze-thaw cycles.
Shipping: Shipping with blue ice.

Antigen Details

Immunogen: KLH conjugated synthetic peptide: human Cyclin D1
Antigen Species: Human
Gene ID: 595
Uniprot ID: P24385
Synonyms: PRAD1;B-cell lymphoma 1 protein (BCL-1);CCND1;PRAD1 oncogene;BCL-1 oncogene;BCL1;G1/S-specific cyclin-D1
Biology Area: Cyclin D family,Cyclin D Family,Cyclin D Family

Research Background

The protein encoded by this gene belongs to the highly conserved cyclin family, whose members are characterized by a dramatic periodicity in protein abundance throughout the cell cycle. Cyclins function as regulators of CDK kinases. Different cyclins exhibit distinct expression and degradation patterns which contribute to the temporal coordination of each mitotic event. This cyclin forms a complex with and functions as a regulatory subunit of CDK4 or CDK6, whose activity is required for cell cycle G1/S transition. This protein has been shown to interact with tumor suppressor protein Rb and the expression of this gene is regulated positively by Rb. Mutations, amplification and overexpression of this gene, which alters cell cycle progression, are observed frequently in a variety of tumors and may contribute to tumorigenesis. [provided by RefSeq, Jul 2008].

Inhibitor · Natural Compounds · Compound Libraries · Recombinant Proteins

This product is for Research Use Only · Not for Human or Veterinary or Therapeutic Use

Tel:781-999-4286 E_mail:info@targetmol.com Address:34 Washington Street,Wellesley Hills,MA 02481