

Anti-CCNB1 Polyclonal Antibody

Product Details

Ig Type:	IgG
Reactivity:	Human,Mouse,Rat (predicted:Cow)
Molecular Weight:	Theoretical: 48 kDa. Actual: 50 kDa.
Purification:	Protein A purified

Applications

1. Paraformaldehyde-fixed, paraffin embedded (Rat esophageal); Antigen retrieval by boiling in sodium citrate buffer (pH6.0) for 15 min; Block endogenous peroxidase by 3% hydrogen peroxide for 20 min; Blocking buffer (normal goat serum) at 37°C for 30 min; Antibody incubation with (Cyclin B1) Polyclonal Antibody, Unconjugated (TMAB-00316) at 1:400 overnight at 4°C, followed by operating according to SP Kit (Rabbit) instructions and DAB staining.
2. Tissue/cell: human colon carcinoma; 4% Paraformaldehyde-fixed and paraffin-embedded; Antigen retrieval: citrate buffer (0.01M, pH6.0), Boiling bathing for 15 min; Block endogenous peroxidase by 3% Hydrogen peroxide for 30 min; Blocking buffer (normal goat serum) at 37°C for 20 min; Incubation: Anti-Cyclin B1 Polyclonal Antibody, Unconjugated (TMAB-00316) 1:200, overnight at 4°C, followed by conjugation to the secondary antibody and DAB staining.
3. Cell: HeLa
Concentration: 1:100
Host/Isotype: Rabbit/IgG
Flow cytometric analysis of primary antibody (Cat#: TMAB-00316) on HeLa (green) compared with isotype control in the absence of primary antibody (blue) followed by Alexa Fluor 488-conjugated goat anti-rabbit IgG (H+L) secondary antibody.
4. Sample:
Lane 1: Lymphnode (Rat) Lysate at 40 µg
Lane 2: Testis (Rat) Lysate at 40 µg
Lane 3: Spleen (Rat) Lysate at 40 µg
Primary: Anti-Cyclin B1 (TMAB-00316) at 1/1000 dilution
Secondary: IRDye800CW Goat Anti-Rabbit IgG at 1/20000 dilution
Predicted band size: 55-60 kDa
Observed band size: 60 kDa
5. HeLa cell; 4% Paraformaldehyde-fixed; Triton X-100 at room temperature for 20 min; Blocking buffer (normal goat serum) at 37°C for 20 min; Antibody incubation with (Cyclin B1) polyclonal Antibody, Unconjugated (TMAB-00316) 1:100, 90 minutes at 37°C; followed by a conjugated Goat Anti-Rabbit IgG antibody at 37°C for 90 minutes, DAPI (blue) was used to stain the cell nucleus.
6. Blank control (blue line): A549 (blue).
Primary Antibody (green line): Rabbit Anti-Cyclin B1 antibody (TMAB-00316).
Dilution: 1 µg/10⁶ cells;
Isotype Control Antibody (orange line): Rabbit IgG.
Secondary Antibody (white blue line): f(ab')₂ fragment goat anti-rabbit IgG-FITC.
Dilution: 1 µg/test.
Protocol

Verified Activity:

The cells were fixed with 2% paraformaldehyde (10 min) and then permeabilized with 0.1% PBS-Tween for 20 min at room temperature. Cells stained with Primary Antibody for 30 min at room temperature. The cells were then incubated in 1 X PBS/2% BSA/10% goat serum to block non-specific protein-protein interactions followed by the antibody for 15 min at room temperature. The secondary antibody used for 40 min at room temperature.

7. Sample:

U251 Cell (Human) Lysate at 30 μ g

Primary: Anti-Cyclin B1 (TMAB-00316) at 1/300 dilution

Secondary: IRDye800CW Goat Anti-Rabbit IgG at 1/20000 dilution

Predicted band size: 48 kDa

Observed band size: 50 kDa

8. Sample:

U937 Cell (Human) Lysate at 30 μ g

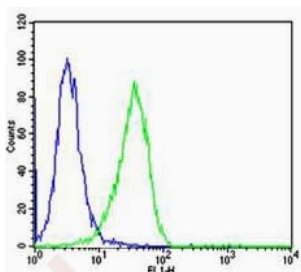
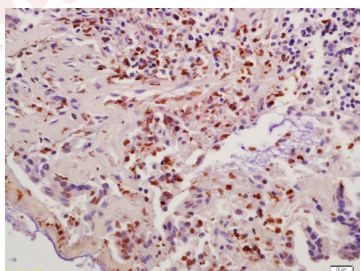
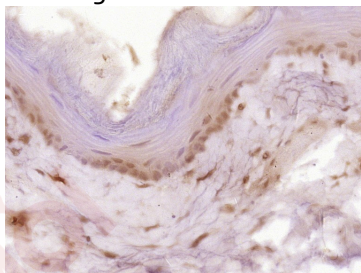
Primary: Anti-Cyclin B1 (TMAB-00316) at 1/300 dilution

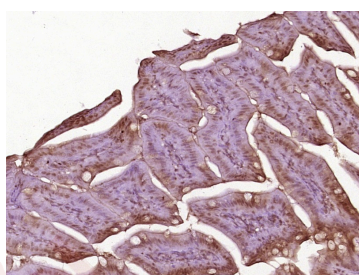
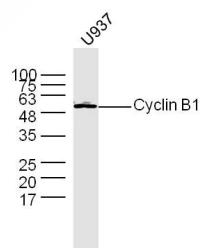
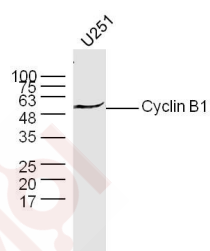
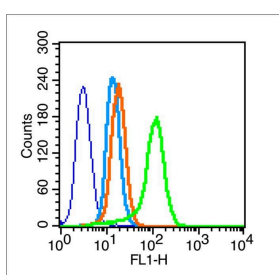
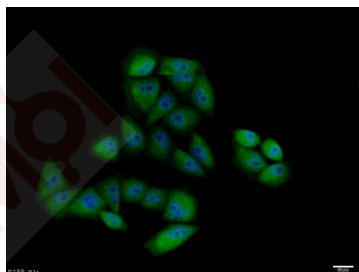
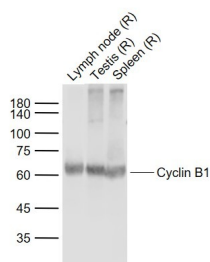
Secondary: IRDye800CW Goat Anti-Rabbit IgG at 1/20000 dilution

Predicted band size: 48 kDa

Observed band size: 50 kDa

9. Paraformaldehyde-fixed, paraffin embedded (Mouse small intestine); Antigen retrieval by boiling in sodium citrate buffer (pH6.0) for 15 min; Block endogenous peroxidase by 3% hydrogen peroxide for 20 min; Blocking buffer (normal goat serum) at 37°C for 30 min; Antibody incubation with (Cyclin B1) Polyclonal Antibody, Unconjugated (TMAB-00316) at 1:400 overnight at 4°C, followed by operating according to SP Kit (Rabbit) instructions and DAB staining.





Application: FCM, ICC/IF, IF, IHC-Fr, IHC-P, WB

Recommended FCM=1 µg/Test; ICC/IF=1:100-500; IF=1:100-500; IHC-Fr=1:100-500; IHC-P=1:100-500; WB=1:500-2000

A DRUG SCREENING EXPERT

Properties

Stability & Storage: Store at -20°C or -80°C for 12 months. Avoid repeated freeze-thaw cycles.

Shipping: Shipping with blue ice.

Antigen Details

Immunogen: KLH conjugated synthetic peptide: human Cyclin B1

Antigen Species: Human

Gene ID: 891

Uniprot ID: P14635

Synonyms: CCNB1;G2/mitotic-specific cyclin-B1;CCNB

Biology Area: Cyclin B family,Cyclins,Cyclin B Family,Cyclin B Family

Research Background

The protein encoded by this gene is a regulatory protein involved in mitosis. The gene product complexes with p34 (cdc2) to form the maturation-promoting factor (MPF). Two alternative transcripts have been found, a constitutively expressed transcript and a cell cycle-regulated transcript, that is expressed predominantly during G2/M phase. The different transcripts result from the use of alternate transcription initiation sites. [provided by RefSeq, Jul 2008].

Inhibitor · Natural Compounds · Compound Libraries · Recombinant Proteins

This product is for Research Use Only · Not for Human or Veterinary or Therapeutic Use

Tel:781-999-4286 E_mail:info@targetmol.com Address:34 Washington Street,Wellesley Hills,MA 02481