

Anti-CCL25 Polyclonal Antibody

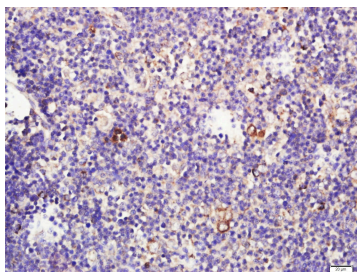
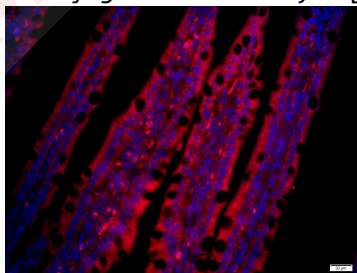
Product Details

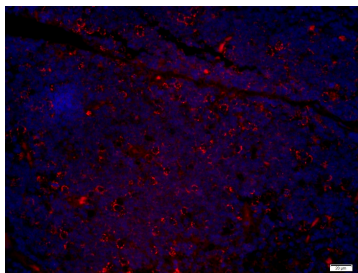
Ig Type:	IgG
Reactivity:	Rat (predicted: Human, Mouse, Dog, Pig, Cow, Horse, Rabbit)
Molecular Weight:	Theoretical: 14 kDa.
Purification:	Protein A purified

Applications

Verified Activity:

1. Paraformaldehyde-fixed, paraffin embedded (rat small intestine); Antigen retrieval by boiling in sodium citrate buffer (pH6) for 15 min; Block endogenous peroxidase by 3% hydrogen peroxide for 20 min; Blocking buffer (normal goat serum) at 37°C for 30 min; Antibody incubation with (TECK) Polyclonal Antibody, Unconjugated (TMAB-00308) at 1:400 overnight at 4°C, followed by a conjugated secondary at [1:500] for 90 minutes and DAPI staining of the nucleus.
2. Paraformaldehyde-fixed, paraffin embedded (rat thymus); Antigen retrieval by boiling in sodium citrate buffer (pH6.0) for 15 min; Block endogenous peroxidase by 3% hydrogen peroxide for 20 min; Blocking buffer (normal goat serum) at 37°C for 30 min; Antibody incubation with (TECK) Polyclonal Antibody, Unconjugated (TMAB-00308) at 1:400 overnight at 4°C, followed by a conjugated secondary for 20 min and DAB staining.
3. Paraformaldehyde-fixed, paraffin embedded (rat thymus); Antigen retrieval by boiling in sodium citrate buffer (pH6) for 15 min; Block endogenous peroxidase by 3% hydrogen peroxide for 20 min; Blocking buffer (normal goat serum) at 37°C for 30 min; Antibody incubation with (TECK) Polyclonal Antibody, Unconjugated (TMAB-00308) at 1:400 overnight at 4°C, followed by a conjugated secondary at [1:500] for 90 minutes and DAPI staining of the nucleus.





Application: IF,IHC-Fr,IHC-P

Recommended IHC-P: 1:100-500; IHC-Fr: 1:100-500; IF: 1:100-500

Properties

Stability & Storage: Store at -20°C or -80°C for 12 months. Avoid repeated freeze-thaw cycles.

Shipping: Shipping with blue ice.

Antigen Details

Immunogen: KLH conjugated synthetic peptide: human CCL25

Antigen Species: Human

Gene ID: 6370

Uniprot ID: O15444

Synonyms: Thymus-expressed chemokine; Chemokine TECK; TECK; SCYA25; Small-inducible cytokine A25; C-C motif chemokine 25; CCL25

Biology Area: Beta Chemokines (CC)

Research Background

This gene belongs to the subfamily of small cytokine CC genes. Cytokines are a family of secreted proteins involved in immunoregulatory and inflammatory processes. The CC cytokines are proteins characterized by two adjacent cysteines. TECK displays chemotactic activity for dendritic cells, thymocytes, and activated macrophages but is inactive on peripheral blood lymphocytes and neutrophils. TECK binds to chemokine receptor CCR9. Two alternatively spliced variants encoding two different isoforms have been identified.

Inhibitor · Natural Compounds · Compound Libraries · Recombinant Proteins

This product is for Research Use Only · Not for Human or Veterinary or Therapeutic Use

Tel: 781-999-4286 E_mail: info@targetmol.com Address: 34 Washington Street, Wellesley Hills, MA 02481