

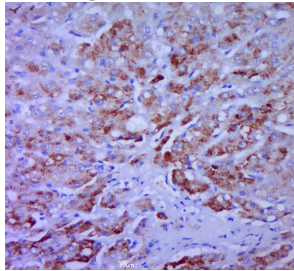
Anti-CCL20 Polyclonal Antibody

Product Details

Ig Type:	IgG
Reactivity:	Human (predicted:Mouse,Rat)
Molecular Weight:	Theoretical: 8.6 kDa.
Purification:	Protein A purified

Applications

Verified Activity: Paraformaldehyde-fixed, paraffin embedded (human liver carcinoma); Antigen retrieval by boiling in sodium citrate buffer (pH6.0) for 15 min; Block endogenous peroxidase by 3% hydrogen peroxide for 20 min; Blocking buffer (normal goat serum) at 37°C for 30 min; Antibody incubation with (CCL20) Polyclonal Antibody, Unconjugated (TMAB-00306) at 1:400 overnight at 4°C, followed by a conjugated secondary for 20 min and DAB staining.



Application:	IF,IHC-Fr,IHC-P
Recommended	IHC-P: 1:100-500; IHC-Fr: 1:100-500; IF: 1:100-500

Properties

Stability & Storage:	Store at -20°C or -80°C for 12 months. Avoid repeated freeze-thaw cycles.
Shipping:	Shipping with blue ice.

Antigen Details

Immunogen:	KLH conjugated synthetic peptide: human CCL20
Antigen Species:	Human
Gene ID:	6364
Uniprot ID:	P78556
Synonyms:	MIP3A;MIP-3[a];MIP-3A;LARC;ST38;exodus-1;CKb4;chemokine (C-C motif) ligand 20;Scya20

Research Background

This antimicrobial gene belongs to the subfamily of small cytokine CC genes. Cytokines are a family of secreted proteins involved in immunoregulatory and inflammatory processes. The CC cytokines are proteins characterized by two adjacent cysteines. The protein encoded by this gene displays chemotactic activity for lymphocytes and can repress proliferation of myeloid progenitors. Two transcript variants encoding different isoforms have been found for this gene. [provided by RefSeq, Sep 2014]

Inhibitor · Natural Compounds · Compound Libraries · Recombinant Proteins

This product is for Research Use Only · Not for Human or Veterinary or Therapeutic Use

Tel:781-999-4286 E_mail:info@targetmol.com Address:34 Washington Street,Wellesley Hills,MA 02481