

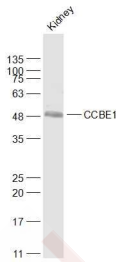
Anti-CCBE1 Polyclonal Antibody

Product Details

Ig Type:	IgG
Reactivity:	Mouse (predicted:Human,Rat,Dog,Pig,Horse)
Molecular Weight:	Theoretical: 41 kDa. Actual: 49 kDa.
Purification:	Protein A purified

Applications

Sample:	Kidney (Mouse) Lysate at 40 µg
Verified Activity:	Primary: Anti-CCBE1 (TMAB-00302) at 1/1000 dilution Secondary: IRDye800CW Goat Anti-Rabbit IgG at 1/20000 dilution Predicted band size: 41 kDa Observed band size: 49 kDa



Application:	WB
Recommended	WB: 1:500-2000

Properties

Stability & Storage:	Store at -20°C or -80°C for 12 months. Avoid repeated freeze-thaw cycles.
Shipping:	Shipping with blue ice.

Antigen Details

Immunogen:	KLH conjugated synthetic peptide: human CCBE1
Antigen Species:	Human
Gene ID:	147372
Uniprot ID:	Q6UXH8
Synonyms:	Full of fluid protein homolog;CCBE1;KIAA1983;Collagen and calcium-binding EGF domain-containing protein 1

Research Background

This gene is thought to function in extracellular matrix remodeling and migration. It is predominantly expressed in the ovary, but down regulated in ovarian cancer cell lines and primary carcinomas, suggesting its role as a tumour suppressor. Mutations in this gene have been associated with Hennekam lymphangiectasia-lymphedema syndrome, a generalized lymphatic dysplasia in humans. [provided by RefSeq, Mar 2010].

Inhibitor · Natural Compounds · Compound Libraries · Recombinant Proteins

This product is for Research Use Only · Not for Human or Veterinary or Therapeutic Use

Tel:781-999-4286 E_mail:info@targetmol.com Address:34 Washington Street,Wellesley Hills,MA 02481