

Anti-CAV1 Polyclonal Antibody

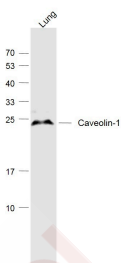
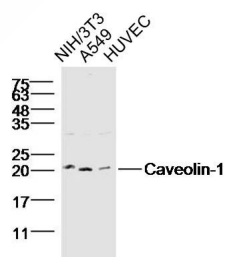
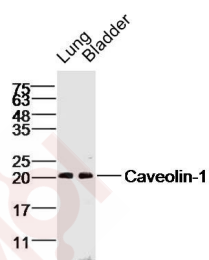
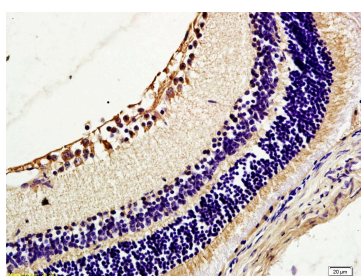
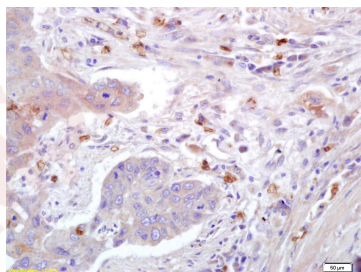
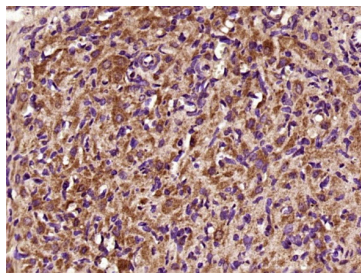
Product Details

Ig Type:	IgG
Reactivity:	Human, Mouse, Rat (predicted: Dog, Pig, Cow, Horse, Rabbit, Sheep)
Molecular Weight:	Theoretical: 20 kDa. Actual: 20 kDa.
Purification:	Protein A purified

Applications

1. Paraformaldehyde-fixed, paraffin embedded (Rat ovary); Antigen retrieval by boiling in sodium citrate buffer (pH6.0) for 15 min; Block endogenous peroxidase by 3% hydrogen peroxide for 20 min; Blocking buffer (normal goat serum) at 37°C for 30 min; Antibody incubation with (Caveolin-1) Polyclonal Antibody, Unconjugated (TMAB-00299) at 1:400 overnight at 4°C, followed by a conjugated secondary antibody for 20 min and DAB staining.
2. Tissue/cell: human lung carcinoma; 4% Paraformaldehyde-fixed and paraffin-embedded; Antigen retrieval: citrate buffer (0.01M, pH6.0), Boiling bathing for 15 min; Block endogenous peroxidase by 3% Hydrogen peroxide for 30 min; Blocking buffer (normal goat serum) at 37°C for 20 min;
Incubation: Anti-Caveolin-1 Polyclonal Antibody, Unconjugated (TMAB-00299) 1:200, overnight at 4°C, followed by conjugation to the secondary antibody and DAb staining.
3. Tissue/cell: mouse retina tissue; 4% Paraformaldehyde-fixed and paraffin-embedded; Antigen retrieval: citrate buffer (0.01M, pH6.0), Boiling bathing for 15 min; Block endogenous peroxidase by 3% Hydrogen peroxide for 30 min; Blocking buffer (normal goat serum) at 37°C for 20 min;
Incubation: Anti-Caveolin-1 Polyclonal Antibody, Unconjugated (TMAB-00299) 1:200, overnight at 4°C, followed by conjugation to the secondary antibody and DAb staining.
4. Sample:
Lung (Mouse) Lysate at 40 µg
Bladder (Mouse) Lysate at 40 µg
Primary: Anti-Caveolin-1 (TMAB-00299) at 1/300 dilution
Secondary: IRDye800CW Goat Anti-Rabbit IgG at 1/20000 dilution
Predicted band size: 20 kDa
Observed band size: 20 kDa
5. Sample:
NIH/3T3 Cell Lysate at 40 µg
A549 Cell Lysate at 40 µg
HUVEC Cell Lysate at 40 µg
Primary: Anti-Caveolin-1 (TMAB-00299) at 1/300 dilution
Secondary: IRDye800CW Goat Anti-Rabbit IgG at 1/20000 dilution
Predicted band size: 20 kDa
Observed band size: 20 kDa
6. Sample:
Lung (Mouse) Lysate at 40 µg
Primary: Anti-Caveolin-1 (TMAB-00299) at 1/1000 dilution
Secondary: IRDye800CW Goat Anti-Rabbit IgG at 1/20000 dilution
Predicted band size: 20 kDa
Observed band size: 20 kDa

Verified Activity:



Application: IF,IHC-Fr,IHC-P,WB

Recommended WB: 1:500-2000; IHC-P: 1:100-500; IHC-Fr: 1:100-500; IF: 1:100-500

Properties

Stability & Storage: Store at -20°C or -80°C for 12 months. Avoid repeated freeze-thaw cycles.

Shipping: Shipping with blue ice.

Antigen Details

Immunogen: KLH conjugated synthetic peptide: human Caveolin-1

Antigen Species: Human

Gene ID: 857

Uniprot ID: Q03135

Synonyms: VIP21;VIP 21;caveolae protein, 22 kD;cell growth-inhibiting protein 32;Caveolin1;MSTP085; caveolin 1 beta isoform;BSCL3;Caveolin 1 caveolae protein 22kDa;LCCNS;

OTTHUMP00000025031;CAV 1;Caveolin-1;CAV;caveolin 1 alpha isoform;CGL3;PPH3

Biology Area: Response to hypoxia,Tumor biomarkers,Cholesterol Metabolism,Cholesterol Metabolism, Hypoxia,Coat Proteins,Caveolae and Clathrin

Research Background

The scaffolding protein encoded by this gene is the main component of the caveolae plasma membranes found in most cell types. The protein links integrin subunits to the tyrosine kinase FYN, an initiating step in coupling integrins to the Ras-ERK pathway and promoting cell cycle progression. The gene is a tumor suppressor gene candidate and a negative regulator of the Ras-p42/44 MAP kinase cascade. CAV1 and CAV2 are located next to each other on chromosome 7 and express colocalizing proteins that form a stable hetero-oligomeric complex. By using alternative initiation codons in the same reading frame, two isoforms (alpha and beta) are encoded by a single transcript from this gene. [provided by RefSeq].

Inhibitor · Natural Compounds · Compound Libraries · Recombinant Proteins

This product is for Research Use Only · Not for Human or Veterinary or Therapeutic Use

Tel:781-999-4286 E_mail:info@targetmol.com Address:34 Washington Street,Wellesley Hills,MA 02481