

Anti-Cathepsin K Polyclonal Antibody

Product Details

Ig Type:	IgG
Reactivity:	Mouse (predicted:Human,Rat,Dog,Pig,Cow,Horse,GuineaPig)
Molecular Weight:	Theoretical: 36 kDa. Actual: 46 kDa.
Purification:	Protein A purified

Applications

Sample:

Lane 1: Mouse Raw264.7 cell lysates

Lane 2: Mouse 4T1 cell lysates

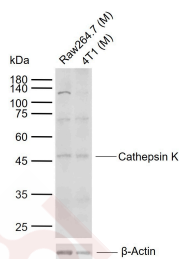
Verified Activity:

Primary: Anti-Cathepsin K (TMAB-00298) at 1/1000 dilution

Secondary: IRDye800CW Goat Anti-Rabbit IgG at 1/20000 dilution

Predicted band size: 36 kDa

Observed band size: 46 kDa



Application: IF,IHC-Fr,WB

Recommended WB: 1:500-2000; IHC-Fr: 1:100-500; IF: 1:100-500

Properties

Stability & Storage: Store at -20°C or -80°C for 12 months. Avoid repeated freeze-thaw cycles.

Shipping: Shipping with blue ice.

Antigen Details

Immunogen: KLH conjugated synthetic peptide: human Cathepsin K

Antigen Species: Human

Gene ID: 1513

Uniprot ID: P43235

Synonyms: CTSK;Cathepsin X;Cathepsin K;CTSO2;Cathepsin O;CTSO;Cathepsin O2

Research Background

The protein encoded by this gene is a lysosomal cysteine proteinase involved in bone remodeling and resorption. This protein, which is a member of the peptidase C1 protein family, is predominantly expressed in osteoclasts. However, the encoded protein is also expressed in a significant fraction of human breast cancers, where it could

A DRUG SCREENING EXPERT

contribute to tumor invasiveness. Mutations in this gene are the cause of pycnodysostosis, an autosomal recessive disease characterized by osteosclerosis and short stature. This gene may be subject to RNA editing. [provided by RefSeq, Jul 2008].

Inhibitor · Natural Compounds · Compound Libraries · Recombinant Proteins

This product is for Research Use Only · Not for Human or Veterinary or Therapeutic Use

Tel:781-999-4286 E_mail:info@targetmol.com Address:34 Washington Street,Wellesley Hills,MA 02481