

## Anti-Caspase-8 Polyclonal Antibody

### Product Details

Ig Type: IgG  
 Reactivity: Human,Rat (predicted:Mouse,Dog,Pig,Cow,Horse)  
 Molecular Weight: Theoretical: 12/55 kDa. Actual: 57 kDa.  
 Purification: Protein A purified

### Applications

1. Blank control (blue line): U251 (blue).  
 Primary Antibody (green line): Rabbit Anti-caspase-8 antibody (TMAB-00290)  
 Dilution: 1 µg/10<sup>6</sup> cells;  
 Isotype Control Antibody (orange line): Rabbit IgG.  
 Secondary Antibody (white blue line): Goat anti-rabbit IgG-PE  
 Dilution: 1 µg/test.

#### Protocol

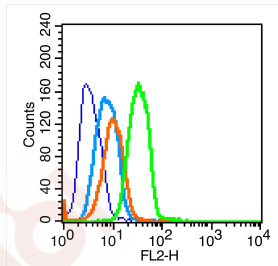
The cells were fixed with 70% ethanol overnight at 4°C and then permeabilized with 0.1% PBS-Tween for 20 min at room temperature. Cells stained with Primary Antibody for 30 min at room temperature. The cells were then incubated in 1 X PBS/2% BSA/10% goat serum to block non-specific protein-protein interactions followed by the antibody for 15 min at room temperature. The secondary antibody used for 40 min at room temperature.

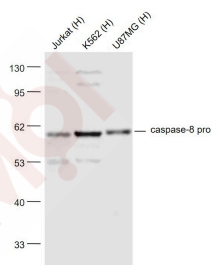
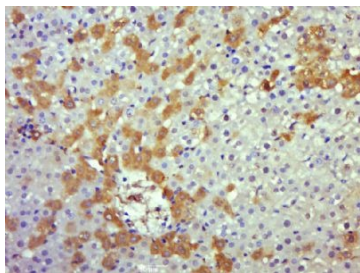
#### Verified Activity:

2. Paraformaldehyde-fixed, paraffin embedded (rat liver); Antigen retrieval by boiling in sodium citrate buffer (pH6.0) for 15 min; Block endogenous peroxidase by 3% hydrogen peroxide for 20 min; Blocking buffer (normal goat serum) at 37°C for 30 min; Antibody incubation with (Caspase 8) Polyclonal Antibody, Unconjugated (TMAB-00290) at 1:500 overnight at 4°C, followed by operating according to SP Kit (Rabbit) instructions and DAB staining.

#### 3. Sample:

Jurkat (Human) Cell Lysate at 30 µg  
 K562 (Human) Cell Lysate at 30 µg  
 U87Mg (Human) Cell Lysate at 30 µg  
 Primary: Anti-caspase-8 subunit p18 (TMAB-00290) at 1/1000 dilution  
 Secondary: IRDye800CW Goat Anti-Rabbit IgG at 1/20000 dilution  
 Predicted band size: 55/18 kDa  
 Observed band size: 57 kDa





Application: FCM,IF,IHC-Fr,IHC-P,WB

Recommended FCM=1 µg/Test; IF=1:100-500; IHC-Fr=1:100-500; IHC-P=1:100-500; WB=1:500-2000

### Properties

Stability & Storage: Store at -20°C or -80°C for 12 months. Avoid repeated freeze-thaw cycles.

Shipping: Shipping with blue ice.

### Antigen Details

Immunogen: KLH conjugated synthetic peptide: rat Caspase-8 subunit p10

Antigen Species: Rat

Gene ID: 54474

Uniprot ID: Q9JHX4

Synonyms: CASP8;Apoptotic protease Mch-5;CAP4;ICE-like apoptotic protease 5;MORT1-associated ced-3 homolog (MACH);CASP-8;MCH5;Caspase-8;FADD-homologous ICE/ced-3-like protease;FADD-like ICE (FLICE);Apoptotic cysteine protease

Biology Area: Caspases, Metabolism, Necroptosis, Caspases, Caspases, Other proteases, Apoptosis

### Research Background

Caspases are cysteine proteases, expressed as inactive precursors, that mediate apoptosis by proteolysis of specific substrates. Caspases have the ability to cleave after aspartic acid residues. There are two classes of caspases involved in apoptosis; initiators (activation by receptor cluster) and effectors (activation by mitochondrial permeability transition). Proapoptotic signals autocatalytically activate initiator caspases, such as Caspase 8 and Caspase 9. Activated initiator caspases then process effector caspases, such as Caspase 3 and Caspase 7, which in turn cause cell collapse.

**Inhibitor · Natural Compounds · Compound Libraries · Recombinant Proteins**

This product is for Research Use Only · Not for Human or Veterinary or Therapeutic Use

Tel: 781-999-4286 E\_mail: info@targetmol.com Address: 34 Washington Street, Wellesley Hills, MA 02481