

## Anti-Caspase-5 p20 Polyclonal Antibody

### Product Details

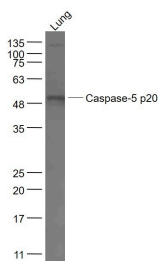
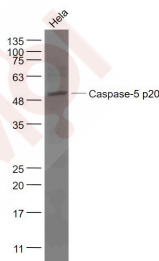
Ig Type: IgG  
Reactivity: Human, Mouse (predicted: Rat, Dog, Pig, Cow, Horse, Rabbit)  
Molecular Weight: Theoretical: 48 kDa. Actual: 50 kDa.  
Purification: Protein A purified

### Applications

1. Sample:  
Hela (Human) Cell Lysate at 30 µg  
Primary: Anti-Caspase-5 p20 (TMAB-00288) at 1/1000 dilution  
Secondary: IRDye800CW Goat Anti-Rabbit IgG at 1/20000 dilution  
Predicted band size: 48 kDa  
Observed band size: 50 kDa

2. Sample:  
Lung (Mouse) Lysate at 40 µg  
Primary: Anti-Caspase-5 p20 (TMAB-00288) at 1/1000 dilution  
Secondary: IRDye800CW Goat Anti-Rabbit IgG at 1/20000 dilution  
Predicted band size: 48 kDa  
Observed band size: 50 kDa

Verified Activity:



Application: WB  
Recommended WB: 1:500-2000

## A DRUG SCREENING EXPERT

---

### Properties

Stability & Storage: Store at -20°C or -80°C for 12 months. Avoid repeated freeze-thaw cycles.

Shipping: Shipping with blue ice.

---

### Antigen Details

Immunogen: KLH conjugated synthetic peptide: human Caspase-5 subunit p20

Antigen Species: Human

Gene ID: 838

Uniprot ID: P51878

Synonyms: ICE;ICE(rel) III;CASP5;ICH3 protease;ICEREL III;MGC141966;Caspase-5 subunit p20;ICH 3; ICERELIII;ICH 3 protease;ICE(rel)III;TY protease;Caspase-5;CASP 5;caspase 5 apoptosis related cysteine protease;Caspase 5 apoptosis related cysteine peptidase;Apoptosis related cysteine protease;TY;Caspase5;ICH3

Biology Area: Caspases

---

### Research Background

Caspase 5 belongs to the Ced3/ICE family of cystein proteases and is an upstream Caspase with a long prodomain. It undergoes a cleavage upon activation, leading to p20 and p10 subunits which have high homology with several other Caspases over the equivalent coding sequences.

**Inhibitor · Natural Compounds · Compound Libraries · Recombinant Proteins**

This product is for Research Use Only · Not for Human or Veterinary or Therapeutic Use

Tel:781-999-4286 E\_mail:info@targetmol.com Address:34 Washington Street,Wellesley Hills,MA 02481