

Anti-Caspase-1 p20 Polyclonal Antibody 2

Product Details

Ig Type:	IgG
Reactivity:	Human,Mouse,Rat
Molecular Weight:	Theoretical: 20/46 kDa. Actual: 20 kDa.
Purification:	Protein A purified

Applications

1. Sample:

Stomach (Mouse) Lysate at 40 µg

Stomach (Rat) Lysate at 40 µg

Large intestine (Rat) Lysate at 40 µg

Primary: Anti-Caspase-1 p20 (TMAB-00283) at 1/300 dilution

Secondary: IRDye800CW Goat Anti-Rabbit IgG at 1/20000 dilution

Predicted band size: 20/46 kDa

Observed band size: 20 kDa

2. Blank control: HL-60. Primary Antibody (green line): Rabbit Anti-Caspase-1 p20 antibody (TMAB-00283)

Dilution: 1 µg/10⁶ cells;

Isotype Control Antibody (orange line): Rabbit IgG.

Secondary Antibody: Goat anti-rabbit IgG-AF488

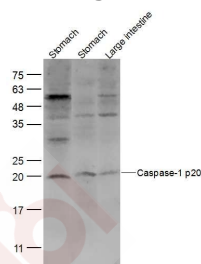
Dilution: 1 µg/test.

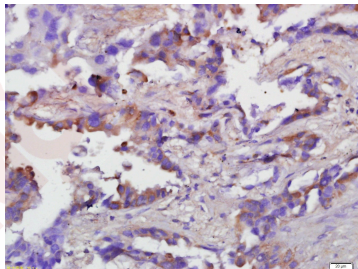
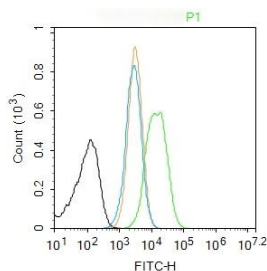
Protocol

The cells were fixed with 4% PFA (10 min at room temperature) and then permeabilized with 0.1% PBST for 20 min at room temperature. The cells were then incubated in 5% BSA to block non-specific protein-protein interactions for 30 min at room temperature. Cells stained with Primary Antibody for 30 min at room temperature. The secondary antibody used for 40 min at room temperature.

3. Paraformaldehyde-fixed, paraffin embedded (Human lung cancer); Antigen retrieval by boiling in sodium citrate buffer (pH6.0) for 15 min; Block endogenous peroxidase by 3% hydrogen peroxide for 20 min; Blocking buffer (normal goat serum) at 37°C for 30 min; Antibody incubation with (Caspase-1 p20) Polyclonal Antibody, Unconjugated (TMAB-00283) at 1:400 overnight at 4°C, followed by a conjugated secondary antibody for 20 min and DAB staining.

Verified Activity:





Application: FCM,IF,IHC-Fr,IHC-P,WB

Recommended WB: 1:500-2000; IHC-P: 1:100-500; IHC-Fr: 1:100-500; IF: 1:100-500; FCM: 1ug/Test

Properties

Stability & Storage: Store at -20°C or -80°C for 12 months. Avoid repeated freeze-thaw cycles.

Shipping: Shipping with blue ice.

Antigen Details

Immunogen: KLH conjugated synthetic peptide: human Caspase-1 p20

Antigen Species: Human

Gene ID: 834

Uniprot ID: P29466

Synonyms: Interleukin-1 beta convertase (IL-1BC);CASP1;Interleukin-1 beta-converting enzyme (ICE;IL-1 beta-converting enzyme);CASP-1;IL1BCE;p45;IL1BC;Caspase-1

Biology Area: Response to hypoxia,Caspases,Metabolism,Caspases,Caspases,Apoptosis,Hypoxia

Research Background

This gene encodes a protein which is a member of the cysteine-aspartic acid protease (caspase) family. Sequential activation of caspases plays a central role in the execution-phase of cell apoptosis. Caspases exist as inactive proenzymes which undergo proteolytic processing at conserved aspartic residues to produce 2 subunits, large and small, that dimerize to form the active enzyme. This gene was identified by its ability to proteolytically cleave and activate the inactive precursor of interleukin-1, a cytokine involved in the processes such as inflammation, septic shock, and wound healing. This gene has been shown to induce cell apoptosis and may function in various developmental stages. Studies of a similar gene in mouse suggest a role in the pathogenesis of Huntington disease. Alternative splicing of this gene results in five transcript variants encoding distinct isoforms. [provided by RefSeq].

Inhibitor · Natural Compounds · Compound Libraries · Recombinant Proteins

This product is for Research Use Only · Not for Human or Veterinary or Therapeutic Use

Tel:781-999-4286 E_mail:info@targetmol.com Address:34 Washington Street,Wellesley Hills,MA 02481