

## Anti-Caspase-1 p20 Polyclonal Antibody

### Product Details

Ig Type:	IgG
Reactivity:	Human,Mouse,Rat
Molecular Weight:	Theoretical: 20/46 kDa. Actual: 46 kDa.
Purification:	Protein A purified

### Applications

1. Blank control: HL-60. Primary Antibody (green line): Rabbit Anti-Caspase-1 p20 antibody (TMAB-00282)

Dilution: 1 µg/10<sup>6</sup> cells;

Isotype Control Antibody (orange line): Rabbit IgG.

Secondary Antibody: Goat anti-rabbit IgG-AF488

Dilution: 1 µg/test.

Protocol

The cells were fixed with 4% PFA (10 min at room temperature) and then permeabilized with 0.1% PBST for 20 min at room temperature. The cells were then incubated in 5% BSA to block non-specific protein-protein interactions for 30 min at room temperature. Cells stained with Primary Antibody for 30 min at room temperature. The secondary antibody used for 40 min at room temperature.

2. Tissue/cell: Mouse spleen tissue; 4% Paraformaldehyde-fixed and paraffin-embedded; Antigen retrieval: citrate buffer (0.01M, pH6.0), Boiling bathing for 15 min; Block endogenous peroxidase by 3% Hydrogen peroxide for 30 min; Blocking buffer (normal goat serum) at 37°C for 20 min;

Verified Activity: Incubation: Anti-Caspase-1 p20 Polyclonal Antibody, Unconjugated (TMAB-00282) 1:500, overnight at 4°C, followed by conjugation to the secondary antibody and DAb staining.

3. Sample: Lung (rat) Lysate at 40 µg

Primary: Anti-Caspase-1 p20 (TMAB-00282) at 1/300 dilution

Secondary: IRDye800CW Goat Anti-Rabbit IgG at 1/20000 dilution

Predicted band size: 20/46 kDa

Observed band size: 46 kDa

4. Sample: Large intestine (rat) Lysate at 40 µg

Primary: Anti-Caspase-1 p20 (TMAB-00282) at 1/300 dilution

Secondary: IRDye800CW Goat Anti-Rabbit IgG at 1/20000 dilution

Predicted band size: 20/46 kDa

Observed band size: 46 kDa

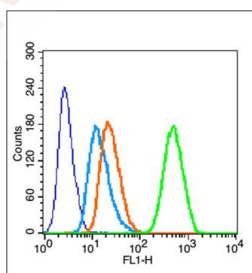
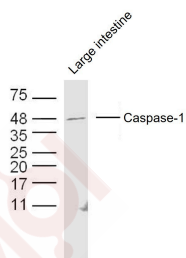
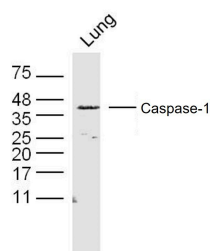
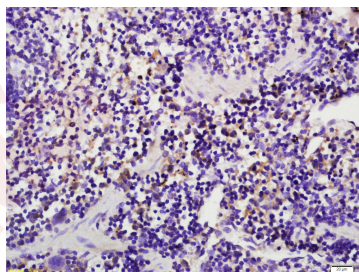
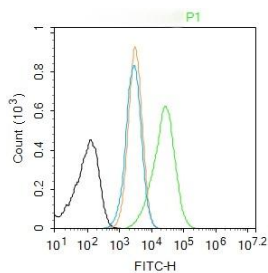
5. Blank control (blue line): MCF7 (fixed with 70% ethanol (Overnight at 4°C) and then permeabilized with 90% ice-cold methanol for 30 min on ice)

Primary Antibody (green line): Rabbit Anti-Caspase-1 p20 antibody (TMAB-00282),

Dilution: 1 µg/10<sup>6</sup> cells;

Isotype Control Antibody (orange line): Rabbit IgG.

Secondary Antibody (white blue line): Goat anti-rabbit IgG-FITC



Application: FCM,IF,IHC-Fr,IHC-P,WB

Recommended WB: 1:500-2000; IHC-P: 1:100-500; IHC-Fr: 1:100-500; IF: 1:100-500; FCM: 1µg/Test

### Properties

Stability & Storage: Store at -20°C or -80°C for 12 months. Avoid repeated freeze-thaw cycles.

Shipping: Shipping with blue ice.

### Antigen Details

Immunogen:	KLH conjugated synthetic peptide: mouse Caspase-1 p20
Antigen Species:	Mouse
Gene ID:	12362
Uniprot ID:	P29452
Synonyms:	CASP1;Interleukin-1 beta convertase (IL-1BC);CASP-1;Caspase-1;IL1BC;Interleukin-1 beta-converting enzyme (ICE;IL-1 beta-converting enzyme);p45;IL1BCE
Biology Area:	Response to hypoxia,Caspases,Metabolism,Caspases,Caspases,Apoptosis,Hypoxia

---

### Research Background

This gene encodes a protein which is a member of the cysteine-aspartic acid protease (caspase) family. Sequential activation of caspases plays a central role in the execution-phase of cell apoptosis. Caspases exist as inactive proenzymes which undergo proteolytic processing at conserved aspartic residues to produce 2 subunits, large and small, that dimerize to form the active enzyme. This gene was identified by its ability to proteolytically cleave and activate the inactive precursor of interleukin-1, a cytokine involved in the processes such as inflammation, septic shock, and wound healing. This gene has been shown to induce cell apoptosis and may function in various developmental stages. Studies of a similar gene in mouse suggest a role in the pathogenesis of Huntington disease. Alternative splicing of this gene results in five transcript variants encoding distinct isoforms. [provided by RefSeq].

**Inhibitor · Natural Compounds · Compound Libraries · Recombinant Proteins**

This product is for Research Use Only · Not for Human or Veterinary or Therapeutic Use

Tel:781-999-4286 E\_mail:info@targetmol.com Address:34 Washington Street,Wellesley Hills,MA 02481