

Anti-CASP4 Polyclonal Antibody

Product Details

Ig Type: IgG
Reactivity: Rat (predicted:Mouse)
Molecular Weight: Theoretical: 10/43 kDa. Actual: 47 kDa.
Purification: Protein A purified

Applications

Sample:

Lane 1: Rat Lymphnode tissue lysates

Lane 2: Rat Lung tissue lysates

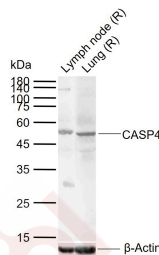
Verified Activity:

Primary: Anti-CASP4 (TMAB-00279) at 1/1000 dilution

Secondary: IRDye800CW Goat Anti-Rabbit IgG at 1/20000 dilution

Predicted band size: 10/43 kDa

Observed band size: 47 kDa



Application: WB

Recommended WB: 1:500-2000

Properties

Stability & Storage: Store at -20°C or -80°C for 12 months. Avoid repeated freeze-thaw cycles.

Shipping: Shipping with blue ice.

Antigen Details

Immunogen: KLH conjugated synthetic peptide: mouse Caspase-4 subunit p10

Antigen Species: Mouse

Gene ID: 12363

Uniprot ID: P70343

Synonyms: Apoptotic cysteine protease Mih1/TX;Caspase 4 apoptosis related cysteine peptidase;CASP-11; ICH2;Mih1/TX;ICEREL II;ICH 2 protease;Caspase-11;Apoptosis related cysteine peptidase;ICE (rel)II;Caspase4;CASP 4;Protease ICH-2;TX protease;Protease ICH-3;EC:3.4.22.64;CASP4; ICERELII;Protease TX;Caspase-4 subunit p10;Caspase-4 subunit 2;tx;ICE(rel) II;ICH 2

Biology Area: Caspases

Research Background

Caspase 4 is a 377 amino acid protein (43 kDa) that belongs to the Ced3/ICE family of cystein proteases. Caspase 4 is an "upstream" caspase with a long prodomain. It undergoes a cleavage upon activation, leading to p20 and p10 subunits which have 67% homology to mature Caspase 1 over the equivalent coding sequences. Caspase 4 is capable of cleaving itself and the p30 Caspase 1 precursor, and of inducing apoptosis in transfected insect or COS cells. In high concentrations, it can also cleave the nuclear DNA enzyme PARP but the biological relevance of this cleavage is unclear. Caspase 4 mRNA is found in most tissues examined with the exception of the brain. Highest expression is found in spleen and lung, with moderate expression in heart and liver. Low expression is observed with skeletal muscle, kidney, and testis.

Inhibitor · Natural Compounds · Compound Libraries · Recombinant Proteins

This product is for Research Use Only · Not for Human or Veterinary or Therapeutic Use

Tel:781-999-4286 E_mail:info@targetmol.com Address:34 Washington Street,Wellesley Hills,MA 02481