

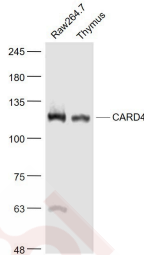
Anti-CARD4 Polyclonal Antibody

Product Details

Ig Type: IgG
Reactivity: Mouse,Rat (predicted:Human)
Molecular Weight: Theoretical: 108 kDa. Actual: 108 kDa.
Purification: Protein A purified

Applications

Sample:
Raw264.7 (Mouse) Cell Lysate at 30 µg
Thymus (Mouse) Lysate at 40 µg
Verified Activity: Primary: Anti-CARD4 (TMAB-00278) at 1/1000 dilution
Secondary: IRDye800CW Goat Anti-Rabbit IgG at 1/20000 dilution
Predicted band size: 108 kDa
Observed band size: 108 kDa



Application: WB
Recommended WB: 1:500-2000

Properties

Stability & Storage: Store at -20°C or -80°C for 12 months. Avoid repeated freeze-thaw cycles.
Shipping: Shipping with blue ice.

Antigen Details

Immunogen: KLH conjugated synthetic peptide: human CARD4
Antigen Species: Human
Gene ID: 10392
Uniprot ID: Q9Y239
Synonyms: NLRC 1;Nucleotide binding oligomerization domain leucine rich repeat and CARD domain containing 1;CLR 7.1;NLR family CARD domain containing 1;NOD1;Caspase recruitment domain 4;Caspase recruitment domain containing protein 4;Caspase recruitment domain protein 4;Caspase recruitment domain family member 4;CLR7.1;NLRC1;Nucleotide binding oligomerization domain containing 1;NOD 1;CARD4;CARD 4
Biology Area: CARD Family

Research Background

Enhances caspase-9-mediated apoptosis. Induces NF-kappa-B activity via RIPK2 and IKK-gamma. Confers responsiveness to intracellular bacterial lipopolysaccharides (LPS). Forms an intracellular sensing system along with ARHGEF2 for the detection of microbial effectors during cell invasion by pathogens. Required for RHOA and RIPK2 dependent NF-kappa-B signaling pathways activation upon *S.flexneri* cell invasion. Involved not only in sensing peptidoglycan (PGN)-derived muropeptides but also in the activation of NF-kappa-B by *Shigella* effector proteins IpgB2 and OspB.

Inhibitor · Natural Compounds · Compound Libraries · Recombinant Proteins

This product is for Research Use Only · Not for Human or Veterinary or Therapeutic Use

Tel:781-999-4286 E_mail:info@targetmol.com Address:34 Washington Street,Wellesley Hills,MA 02481