

## Anti-CAMKK2 Polyclonal Antibody

### Product Details

Ig Type:	IgG
Reactivity:	Human,Rat (predicted:Mouse,Pig,Cow,Horse,Sheep)
Molecular Weight:	Theoretical: 55 kDa. Actual: 70 kDa.
Purification:	Protein A purified

### Applications

1. Blank control (Black line): Molt4 (Black).  
Primary Antibody (green line): Rabbit Anti-CAMKK2 antibody (TMAB-00276)  
Dilution: 1 µg/10<sup>6</sup> cells;  
Isotype Control Antibody (orange line): Rabbit IgG.  
Secondary Antibody (white blue line): Goat anti-rabbit IgG-AF647  
Dilution: 1 µg/test.

#### Protocol

The cells were fixed with 4% PFA (10 min at room temperature) and then permeabilized with PBST for 20 min at room temperature. The cells were then incubated in 5% BSA to block non-specific protein-protein interactions for 30 min at room temperature. Cells stained with Primary Antibody for 30 min at room temperature. The secondary antibody used for 40 min at room temperature.

2. Paraformaldehyde-fixed, paraffin embedded (Rat brain); Antigen retrieval by microwave in sodium citrate buffer (pH6.0); Block endogenous peroxidase by 3% hydrogen peroxide for 30 minutes; Blocking buffer (3% BSA) at RT for 30 min; Antibody incubation with (CAMKK2) Polyclonal Antibody, Unconjugated (TMAB-00276) at 1:400 overnight at 4°C, followed by conjugation to the secondary antibody (labeled with HRP) and DAB staining.

#### Verified Activity:

3. Molt-4 cells were fixed with 4% PFA for 10 min at room temperature, permeabilized with 0.1% PBST for 20 min at room temperature, and incubated in 5% BSA blocking buffer for 30 min at room temperature. Cells were then stained with CAMKK2 Antibody (TMAB-00276) at 1:100 dilution in blocking buffer and incubated for 30 min at room temperature, washed twice with 2% BSA in PBS, followed by secondary antibody incubation for 40 min at room temperature. Acquisitions of 20,000 events were performed. Cells stained with primary antibody (green), and isotype control (orange).

#### 4. Sample:

Lane 1: Human Jurkat cell lysates

Lane 2: Human MOLT4 cell lysates

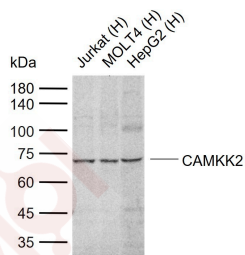
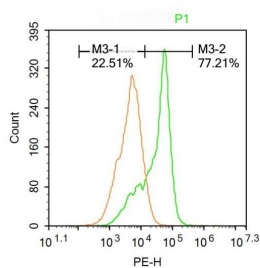
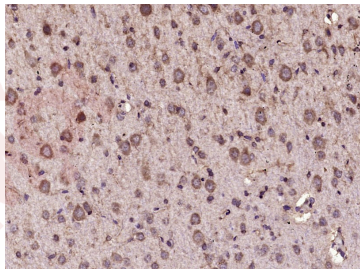
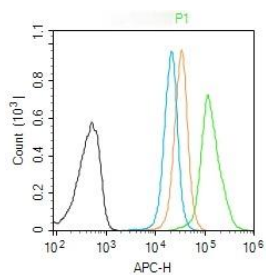
Lane 3: Human HepG2 cell lysates

Primary: Anti-CAMKK2 (TMAB-00276) at 1/1000 dilution

Secondary: IRDye800CW Goat Anti-Rabbit IgG at 1/20000 dilution

Predicted band size: 55 kDa

Observed band size: 70 kDa



Application: FCM,IF,IHC-Fr,IHC-P,WB

Recommended WB: 1:500-2000; IHC-P: 1:100-500; IHC-Fr: 1:100-500; IF: 1:100-500; FCM: 1ug/Test

### Properties

Stability & Storage: Store at -20°C or -80°C for 12 months. Avoid repeated freeze-thaw cycles.

Shipping: Shipping with blue ice.

### Antigen Details

Immunogen: KLH conjugated synthetic peptide: human CAMKK2

Antigen Species: Human

Gene ID: 10645

Uniprot ID: Q96RR4

Synonyms: CaM KK beta;CaM kinase kinase beta;CAMKK 2;Calcium/calmodulin dependent protein kinase beta;CAMKKB;Calcium/calmodulin dependent protein kinase  $\beta$ ;CAMKK;Calcium/calmodulin dependent protein kinase kinase 2;CaMKK beta

Biology Area: MAPK pathway,MAPK Pathway,Calmodulin Pathway

### Research Background

The product of this gene belongs to the Serine/Threonine protein kinase family, and to the Ca(2+)/calmodulin-dependent protein kinase subfamily. This protein plays a role in the calcium/calmodulin-dependent (CaM) kinase cascade by phosphorylating the downstream kinases CaMK1 and CaMK4. Seven transcript variants encoding six distinct isoforms have been identified for this gene. Additional splice variants have been described but their full-length nature has not been determined. The identified isoforms exhibit a distinct ability to undergo autophosphorylation and to phosphorylate the downstream kinases. [provided by RefSeq, Jul 2008].

**Inhibitor · Natural Compounds · Compound Libraries · Recombinant Proteins**

This product is for Research Use Only · Not for Human or Veterinary or Therapeutic Use

Tel:781-999-4286 E\_mail:info@targetmol.com Address:34 Washington Street,Wellesley Hills,MA 02481