

Anti-Calreticulin Polyclonal Antibody

Product Details

Ig Type:	IgG
Reactivity:	Human
Molecular Weight:	Theoretical: 44 kDa. Actual: 52 kDa.
Purification:	Protein A purified

Applications

1. Sample:

Lane 1: Human Jurkat cell lysates

Lane 2: Human HepG2 cell lysates

Lane 3: Human MCF-7 cell lysates

Primary: Anti-Calreticulin (TMAB-00273) at 1/1000 dilution

Secondary: IRDye800CW Goat Anti-Rabbit IgG at 1/20000 dilution

Predicted band size: 44 kDa

Observed band size: 52 kDa

2. Paraformaldehyde-fixed, paraffin embedded Human Lung; Antigen retrieval by boiling in sodium citrate buffer (pH6.0) for 15 min; Antibody incubation with Calreticulin Polyclonal Antibody, Unconjugated (TMAB-00273) at 1:200 overnight at 4°C, followed by conjugation to the secondary antibody and DAB staining.

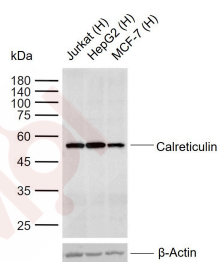
3. Paraformaldehyde-fixed, paraffin embedded Human Liver; Antigen retrieval by boiling in sodium citrate buffer (pH6.0) for 15 min; Antibody incubation with Calreticulin Polyclonal Antibody, Unconjugated (TMAB-00273) at 1:200 overnight at 4°C, followed by conjugation to the secondary antibody and DAB staining.

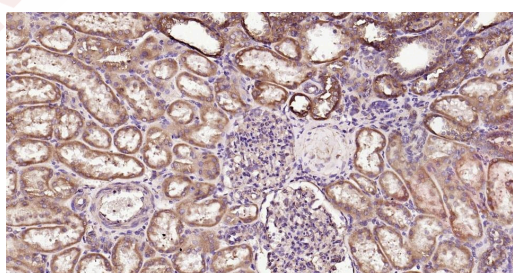
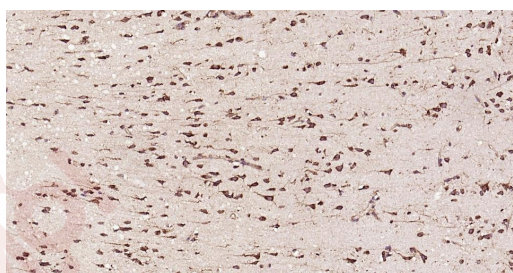
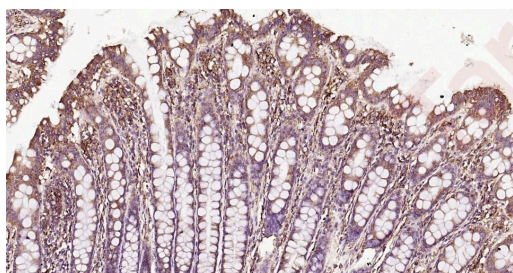
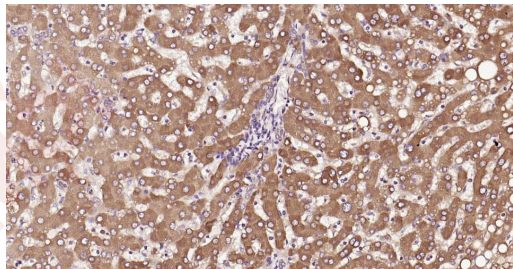
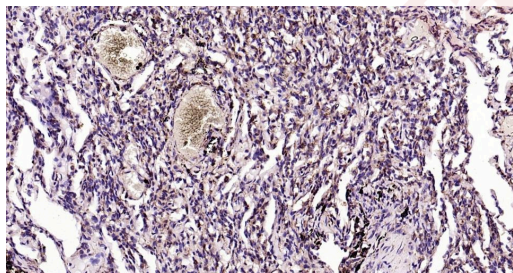
4. Paraformaldehyde-fixed, paraffin embedded Human Colon; Antigen retrieval by boiling in sodium citrate buffer (pH6.0) for 15 min; Antibody incubation with Calreticulin Polyclonal Antibody, Unconjugated (TMAB-00273) at 1:200 overnight at 4°C, followed by conjugation to the secondary antibody and DAB staining.

5. Paraformaldehyde-fixed, paraffin embedded Human Cerebrum; Antigen retrieval by boiling in sodium citrate buffer (pH6.0) for 15 min; Antibody incubation with Calreticulin Polyclonal Antibody, Unconjugated (TMAB-00273) at 1:200 overnight at 4°C, followed by conjugation to the secondary antibody and DAB staining.

6. Paraformaldehyde-fixed, paraffin embedded Human Kidney; Antigen retrieval by boiling in sodium citrate buffer (pH6.0) for 15 min; Antibody incubation with Calreticulin Polyclonal Antibody, Unconjugated (TMAB-00273) at 1:200 overnight at 4°C, followed by conjugation to the secondary antibody and DAB staining.

Verified Activity:





Application: ELISA,IF,IHC-Fr,IHC-P,WB

Recommended WB: 1:500-2000; IHC-P: 1:100-500; IHC-Fr: 1:100-500; IF: 1:100-500; ELISA: 1:5000-10000

Properties

Stability & Storage: Store at -20°C or -80°C for 12 months. Avoid repeated freeze-thaw cycles.

Shipping: Shipping with blue ice.

Antigen Details

Immunogen: KLH conjugated synthetic peptide: human Calreticulin
Antigen Species: Human
Gene ID: 811
Uniprot ID: P27797
Synonyms: cC1qR;CRT;HEL-S-99n;SSA;calreticulin;RO
Biology Area: ER

Research Background

Calreticulin is a highly conserved chaperone protein which resides primarily in the endoplasmic reticulum, and is involved in a variety of cellular processes, among them, cell adhesion. Additionally, it functions in protein folding quality control and calcium homeostasis. Calreticulin is also found in the nucleus, suggesting that it may have a role in transcription regulation. Systemic lupus erythematosus is associated with increased autoantibody titers against calreticulin. Recurrent mutations in calreticulin have been linked to various neoplasms, including the myeloproliferative type.[provided by RefSeq, May 2020]

Inhibitor · Natural Compounds · Compound Libraries · Recombinant Proteins

This product is for Research Use Only · Not for Human or Veterinary or Therapeutic Use

Tel:781-999-4286 E_mail:info@targetmol.com Address:34 Washington Street,Wellesley Hills,MA 02481