

Anti-Calnexin Polyclonal Antibody

Product Details

Ig Type: IgG
Reactivity: Human, Mouse, Rat (predicted: Chicken, Cow, Horse, Rabbit)
Molecular Weight: Theoretical: 65 kDa. Actual: 78 kDa.
Purification: Protein A purified

Applications

1. Blank control: H9C2 Cells (blue). Primary Antibody: Rabbit Anti-CANX/FITC Conjugated antibody (TMAB-00270/FITC), Dilution: 1 µg in 100 µL 1X PBS containing 0.5% BSA; Isotype Control Antibody: Rabbit IgG/FITC (orange), used under the same conditions.

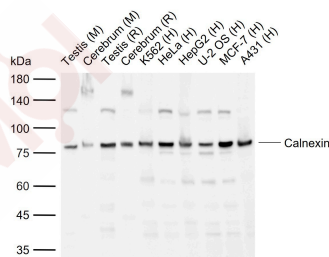
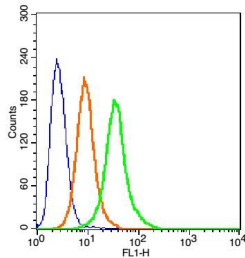
Protocol

The cells were washed twice with phosphate-buffered saline (PBS). The cells were incubated in 1 X PBS containing 0.5% BSA + 10% goat serum (15 min) to block non-specific protein-protein interactions followed by the antibody (TMAB-00270/FITC, 1 µg/1x10⁶ cells) for 30 min on ice.

2. Sample:

Lane 1: Mouse Testis tissue lysates
 Lane 2: Mouse Cerebrum tissue lysates
 Lane 3: Rat Testis tissue lysates
 Lane 4: Rat Cerebrum tissue lysates
 Lane 5: Human K562 cell lysates
 Lane 6: Human HeLa cell lysates
 Lane 7: Human HepG2 cell lysates
 Lane 8: Human U-2 OS cell lysates
 Lane 9: Human MCF-7 cell lysates
 Lane 10: Human A431 cell lysates
 Primary: Anti-Calnexin (TMAB-00270) at 1/1000 dilution
 Secondary: IRDye800CW Goat Anti-Rabbit IgG at 1/20000 dilution
 Predicted band size: 65 kDa
 Observed band size: 78 kDa

Verified Activity:



A DRUG SCREENING EXPERT

Application: FCM,WB
Recommended WB: 1:500-2000; FCM: 1µg /test

Properties

Stability & Storage: Store at -20°C or -80°C for 12 months. Avoid repeated freeze-thaw cycles.
Shipping: Shipping with blue ice.

Antigen Details

Immunogen: KLH conjugated synthetic peptide: human CANX
Antigen Species: Human
Gene ID: 821
Uniprot ID: P27824
Synonyms: CNX;calnexin;P90;IP90
Biology Area: Visual system,ER

Research Background

This gene encodes a member of the calnexin family of molecular chaperones. The encoded protein is a calcium-binding, endoplasmic reticulum (ER)-associated protein that interacts transiently with newly synthesized N-linked glycoproteins, facilitating protein folding and assembly. It may also play a central role in the quality control of protein folding by retaining incorrectly folded protein subunits within the ER for degradation. Alternatively spliced transcript variants encoding the same protein have been described. [provided by RefSeq]

Inhibitor · Natural Compounds · Compound Libraries · Recombinant Proteins

This product is for Research Use Only · Not for Human or Veterinary or Therapeutic Use

Tel:781-999-4286 E_mail:info@targetmol.com Address:34 Washington Street,Wellesley Hills,MA 02481