

Anti-CALCRL Polyclonal Antibody

Product Details

Ig Type: IgG
Reactivity: Mouse (predicted:Rat,Human)
Molecular Weight: Theoretical: 50 kDa. Actual: 50 kDa.
Purification: Protein A purified

Applications

1. Sample:

Lane 1: Mouse Kidney tissue lysates

Lane 2: Mouse Heart tissue lysates

Primary: Anti-CALCRL (TMAB-00268) at 1/1000 dilution

Secondary: IRDye800CW Goat Anti-Rabbit IgG at 1/20000 dilution

Predicted band size: 50 kDa

Verified Activity: Observed band size: 50 kDa

2. Sample:

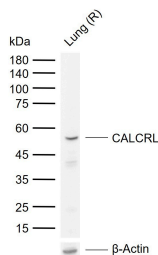
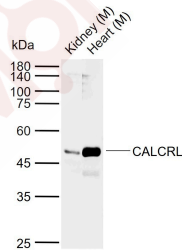
Lane 1: Rat Lung tissue lysates

Primary: Anti-CALCRL (TMAB-00268) at 1/1000 dilution

Secondary: IRDye800CW Goat Anti-Rabbit IgG at 1/20000 dilution

Predicted band size: 50 kDa

Observed band size: 53 kDa



Application: WB

Recommended WB: 1:500-2000

A DRUG SCREENING EXPERT

Properties

Stability & Storage: Store at -20°C or -80°C for 12 months. Avoid repeated freeze-thaw cycles.

Shipping: Shipping with blue ice.

Antigen Details

Immunogen: KLH conjugated synthetic peptide: human CGRPR1

Antigen Species: Human

Gene ID: 10203

Uniprot ID: Q16602

Synonyms: CGRP type 1 receptor; calcitonin receptor like precursor; CGRPR; CRLR; Calcitonin receptor like; Calcitonin gene related peptide type 1 receptor; CALRL; Calcitonin Receptor Like Receptor

Biology Area: Calcium Signaling, GPCR

Research Background

CRLR is a receptor for calcitonin gene related peptide type 1. The activity of CRLR is mediated by G proteins which activate adenylyl cyclase. CRLR expression has been reported in brain, lung, blood vessel, liver, and intestinal tract. ESTs have been isolated from B Cell/lung/testis, bone marrow, embryo, lung, and synovium libraries.

Inhibitor · Natural Compounds · Compound Libraries · Recombinant Proteins

This product is for Research Use Only · Not for Human or Veterinary or Therapeutic Use

Tel: 781-999-4286 E_mail: info@targetmol.com Address: 34 Washington Street, Wellesley Hills, MA 02481