

Anti-C9orf140 Polyclonal Antibody

Product Details

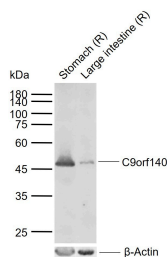
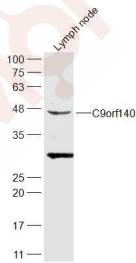
Ig Type: IgG
Reactivity: Rat (predicted: Human, Mouse, Chicken, Cow, Horse, Rabbit)
Molecular Weight: Theoretical: 43 kDa. Actual: 47 kDa.
Purification: Protein A purified

Applications

1. Sample:
LymphNode (Rat) Lysate at 40 µg
Primary: Anti-C9orf140 (TMAB-00265) at 1/300 dilution
Secondary: IRDye800CW Goat Anti-Rabbit IgG at 1/20000 dilution
Predicted band size: 43 kDa
Observed band size: 43 kDa

Verified Activity:

2. Sample:
Lane 1: Rat Stomach tissue lysates
Lane 2: Rat Large intestine tissue lysates
Primary: Anti-C9orf140 (TMAB-00265) at 1/1000 dilution
Secondary: IRDye800CW Goat Anti-Rabbit IgG at 1/20000 dilution
Predicted band size: 43 kDa
Observed band size: 47 kDa



Application: WB

Recommended WB: 1:500-2000

Properties

Stability & Storage: Store at -20°C or -80°C for 12 months. Avoid repeated freeze-thaw cycles.

Shipping: Shipping with blue ice.

Antigen Details

Immunogen: KLH conjugated synthetic peptide: human C9orf140

Antigen Species: Human

Gene ID: 89958

Uniprot ID: Q86UD0

Synonyms: SAPCD2;Tumor specificity and mitosis phase-dependent expression protein;p42.3;C9orf140; Protein C9orf140;2010317E24Rik;Chromosome 9 open reading frame 140;Suppressor APC domain containing 2;Suppressor APC domain containing protein 2;TS/MDEP;SAPC2

Research Background

C9orf140 (chromosome 9 open reading frame 140), also known as TS/MDEP (tumor specificity and mitosis phase-dependent expression protein) or p42.3, is a 394 amino acid nuclear and cytoplasmic protein encoded by a gene that maps to human chromosome 9q34.3. Chromosome 9 consists of about 145 million bases, represents 4% of the human genome and encodes nearly 900 genes. Thought to play a role in gender determination, deletion of the distal portion of 9p can lead to development of male to female sex reversal, the phenotype of a female with a male X,Y genotype. Hereditary hemorrhagic telangiectasia, which is characterized by harmful vascular defects, is associated with the chromosome 9 gene encoding endoglin protein, ENG. Familial dysautonomia is also associated with chromosome 9 though through the gene IKBKAP. Notably, chromosome 9 encompasses the largest interferon family gene cluster. Chromosome 9 is partnered with chromosome 22 in the translocation leading to the aberrant production of BCR-ABL fusion protein often found in leukemias.

Inhibitor · Natural Compounds · Compound Libraries · Recombinant Proteins

This product is for Research Use Only · Not for Human or Veterinary or Therapeutic Use

Tel:781-999-4286 E_mail:info@targetmol.com Address:34 Washington Street,Wellesley Hills,MA 02481