

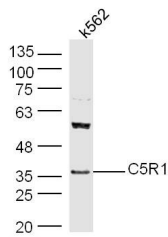
Anti-C5AR1 Polyclonal Antibody

Product Details

Ig Type:	IgG
Reactivity:	Human (predicted:Rat,Dog,Pig,Cow,Rabbit,Sheep,GuineaPig)
Molecular Weight:	Theoretical: 39 kDa. Actual: 36 kDa.
Purification:	Protein A purified

Applications

Verified Activity:	Protein: k562 (human) lysate at 40 µg;
	Primary: rabbit Anti-C5R1 (TMAB-00263) at 1:300;
	Secondary: HRP conjugated Goat-Anti-rabbit IgG (secondary antibody) at 1: 5000;
	Predicted band size: 39 kDa Observed band size: 36 kDa



Application:	WB
Recommended	WB: 1:500-2000

Properties

Stability & Storage:	Store at -20°C or -80°C for 12 months. Avoid repeated freeze-thaw cycles.
Shipping:	Shipping with blue ice.

Antigen Details

Immunogen:	KLH conjugated synthetic peptide: human C5R1
Antigen Species:	Human
Gene ID:	728
Uniprot ID:	P21730
Synonyms:	C5a anaphylatoxin chemotactic receptor 1;C5a anaphylatoxin chemotactic receptor (C5a-R; C5aR);CD88;C5R1;C5AR1
Biology Area:	MAC,Vitamins / minerals,Vitamins / Minerals,GPCR

Research Background

CD88, also known as C5a receptor (C5aR), is a G protein-coupled integral membrane protein. CD88, which is expressed on neutrophils, monocytes, macrophages, hepatocytes and mast cells, as well as on various epithelial and endothelial cells, serves as a receptor for the inflammatory peptide C5a. Research studies suggest a role for CD88 in the inflammatory response. The binding of C5a to CD88 has been shown to elicit increased production of

A DRUG SCREENING EXPERT

acute phase proteins in liver. In brain, an increased production of CD88 has been shown to be associated with inflammation. Research also indicates a role for C5a/C5aR in the pathogenesis of rheumatoid arthritis, as well as a heightened responsiveness of human bronchial epithelial cells (HBECS) to C5a upon exposure of these cells to cigarette smoke and other environmental irritants.

Inhibitor · Natural Compounds · Compound Libraries · Recombinant Proteins

This product is for Research Use Only · Not for Human or Veterinary or Therapeutic Use

Tel:781-999-4286 E_mail:info@targetmol.com Address:34 Washington Street,Wellesley Hills,MA 02481