

Anti-C1QL1 Polyclonal Antibody

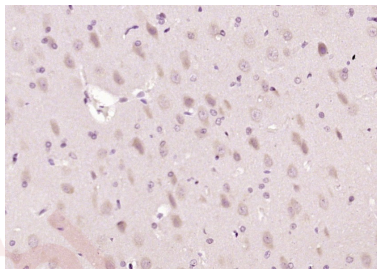
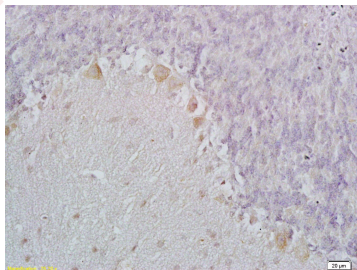
Product Details

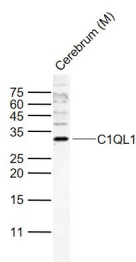
Ig Type:	IgG
Reactivity:	Mouse,Rat (predicted:Human,Dog,Pig,Cow)
Molecular Weight:	Theoretical: 25 kDa. Actual: 32 kDa.
Purification:	Protein A purified

Applications

Verified Activity:

1. Tissue/cell: mouse cerebel tissue; 4% Paraformaldehyde-fixed and paraffin-embedded; Antigen retrieval: citrate buffer (0.01M, pH6.0), Boiling bathing for 15 min; Block endogenous peroxidase by 3% Hydrogen peroxide for 30 min; Blocking buffer (normal goat serum) at 37°C for 20 min; Incubation: Anti-C1QL1 Polyclonal Antibody, Unconjugated (TMAB-00260) 1:200, overnight at 4°C, followed by conjugation to the secondary antibody and DAB staining.
2. Paraformaldehyde-fixed, paraffin embedded (rat brain); Antigen retrieval by boiling in sodium citrate buffer (pH6.0) for 15 min; Block endogenous peroxidase by 3% hydrogen peroxide for 20 min; Blocking buffer (normal goat serum) at 37°C for 30 min; Antibody incubation with (C1QL1) Polyclonal Antibody, Unconjugated (TMAB-00260) at 1:200 overnight at 4°C, followed by operating according to SP Kit (Rabbit) instructions and DAB staining.
3. Sample:
Lane 1: Cerebrum (Mouse) Lysate at 40 µg
Primary: Anti-C1QL1 (TMAB-00260) at 1/1000 dilution
Secondary: IRDye800CW Goat Anti-Rabbit IgG at 1/20000 dilution
Predicted band size: 30 kDa
Observed band size: 32 kDa





Application: IF,IHC-Fr,IHC-P,WB

Recommended WB: 1:500-2000; IHC-P: 1:100-500; IHC-Fr: 1:100-500; IF: 1:100-500

Properties

Stability & Storage: Store at -20°C or -80°C for 12 months. Avoid repeated freeze-thaw cycles.

Shipping: Shipping with blue ice.

Antigen Details

Immunogen: KLH conjugated synthetic peptide: human C1QL1

Antigen Species: Human

Gene ID: 10882

Uniprot ID: O75973

Synonyms: C1qrf; Complement component 1 Q subcomponent-like 1; C1ql1; C1q-related factor; CTRP14; Crf; C1q and tumor necrosis factor-related protein 14 (C1q/TNF-related protein 14; CTRP14)

Biology Area: Complement, ECM Proteins

Research Background

C1q is part of the C1 enzyme complex, which activates the serum complement system. The residues of the globular domain in C1q share homology with several other secreted and membrane-bound collagen or collagen-like proteins, including pre-cerebellin and collagen types VIII and X, as well as the human and mouse genes encoding Apm1/BPB80 and AdipoQ/ACRP30, respectively. These various C1q-related proteins are found in adipose serum, corneal endothelium, chondrocytes and cerebral Purkinje cells. C1qL1 (complement component 1, q subcomponent-like 1), also known as CRF or C1QRF, is a polypeptide with a hydrophobic signal sequence, a collagenous region and a globular domain at the carboxy terminus, which shares homology to the C1q globular domain. C1qL1 transcripts are most abundant in areas of the nervous system that are associated with motor function, including cerebral Purkinje cells, the pons, the accessory olivary nucleus, and the red nucleus. The similarity of mouse C1qL1 to human C1qL1 suggests a conserved and important role for the protein. In humans, the gene encoding C1qL1 maps to chromosome 17q21.

Inhibitor · Natural Compounds · Compound Libraries · Recombinant Proteins

This product is for Research Use Only · Not for Human or Veterinary or Therapeutic Use

Tel: 781-999-4286 E_mail: info@targetmol.com Address: 34 Washington Street, Wellesley Hills, MA 02481