

## Anti-C1QA Polyclonal Antibody

### Product Details

Ig Type:	IgG
Reactivity:	Human (predicted:Mouse,Rat)
Molecular Weight:	Theoretical: 24 kDa. Actual: 25 kDa.
Purification:	Protein A purified

### Applications

#### 1. Sample:

K562 (Human) Cell Lysate at 30 µg

Primary: Anti-C1Q (TMAB-00258) at 1/1000 dilution

Secondary: IRDye800CW Goat Anti-Rabbit IgG at 1/20000 dilution

Predicted band size: 24 kDa

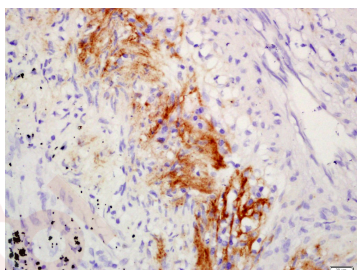
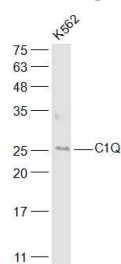
Observed band size: 25 kDa

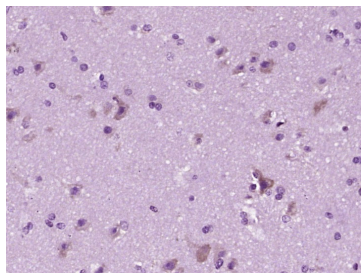
2. Tissue/cell: human lung carcinoma; 4% Paraformaldehyde-fixed and paraffin-embedded; Antigen retrieval: citrate buffer (0.01M, pH6.0), Boiling bathing for 15 min; Block endogenous peroxidase by 3% Hydrogen peroxide for 30 min; Blocking buffer (normal goat serum) at 37°C for 20 min;

Incubation: Anti-C1Q Polyclonal Antibody, Unconjugated (TMAB-00258) 1:200, overnight at 4°C, followed by conjugation to the secondary antibody and DAB staining.

3. Paraformaldehyde-fixed, paraffin embedded (human brain glioma); Antigen retrieval by boiling in sodium citrate buffer (pH6.0) for 15 min; Block endogenous peroxidase by 3% hydrogen peroxide for 20 min; Blocking buffer (normal goat serum) at 37°C for 30 min; Antibody incubation with (C1Q) Polyclonal Antibody, Unconjugated (TMAB-00258) at 1:400 overnight at 4°C, followed by operating according to SP Kit (Rabbit) instructions and DAB staining.

Verified Activity:





Application: IF,IHC-Fr,IHC-P,WB

Recommended IF=1:100-500; IHC-Fr=1:50-200; IHC-P=1:50-200; WB=1:500-2000

### Properties

Stability & Storage: Store at -20°C or -80°C for 12 months. Avoid repeated freeze-thaw cycles.

Shipping: Shipping with blue ice.

### Antigen Details

Immunogen: KLH conjugated synthetic peptide: human C1QA

Antigen Species: Human

Gene ID: 712

Uniprot ID: P02745

Synonyms: C1QA; Complement C1q subcomponent subunit A

Biology Area: Classical Pathway

### Research Background

C1q, a subcomponent of the classical complement pathway, is composed of nine subunits that mediate classical complement activation and thereby play an important role in the immune response. Six of these subunits are disulfide-linked dimers of chains A and B, while three of these subunits, designated C1q-A through C1q-C, are disulfide-linked dimers of chain C. The presence of receptors for C1q on effector cells modulates its activity, which may be antibody-dependent or independent. Macrophages are the primary source of C1q, while anti-inflammatory drugs as well as cytokines differentially regulate expression of the mRNA as well as the protein. However, its ability to modulate the interaction of platelets with collagen and immune complexes suggests C1q influences homeostasis as well as other immune activities, and perhaps thrombotic complications resulting from immune injury. Defects in C1q-A, C1q-B and C1q-C cause inactivation of the classical pathway, leading to a rare genetic disorder characterized by lupus-like symptoms.

**Inhibitor · Natural Compounds · Compound Libraries · Recombinant Proteins**

This product is for Research Use Only · Not for Human or Veterinary or Therapeutic Use

Tel:781-999-4286 E\_mail:info@targetmol.com Address:34 Washington Street,Wellesley Hills,MA 02481