

## Anti-BTN2A1 Polyclonal Antibody

### Product Details

Ig Type:	IgG
Reactivity:	Human
Molecular Weight:	Theoretical: 57 kDa.
Purification:	Protein A purified

### Applications

1. Blank control: SH-SY5Y.

Primary Antibody (green line): Rabbit Anti-BTN2A1 antibody (TMAB-00255)

Dilution: 2 µg/10<sup>6</sup> cells;

Isotype Control Antibody (orange line): Rabbit IgG.

Secondary Antibody: Goat anti-rabbit IgG-AF647

Dilution: 1 µg/test.

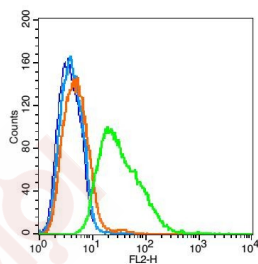
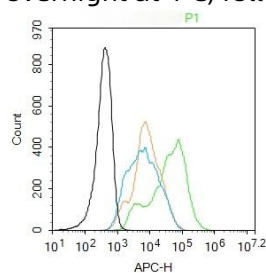
Protocol

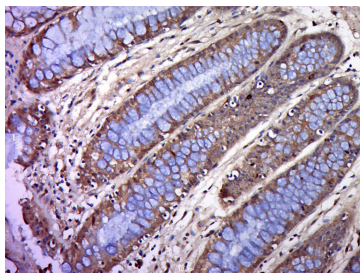
The cells were then incubated in 5% BSA to block non-specific protein-protein interactions for 30 min at room temperature. Cells stained with Primary Antibody for 30 min at room temperature. The secondary antibody used for 40 min at room temperature.

Verified Activity:

2. Blank control: MCF7 cells (blue). Primary Antibody: Rabbit Anti-BTN2A1 antibody (TMAB-00255), Dilution: 5 µg in 100 µL 1X PBS containing 0.5% BSA; Isotype Control Antibody: Rabbit IgG (orange), used under the same conditions. Secondary Antibody: Goat anti-rabbit IgG-Pe (white blue), Dilution: 1:200 in 1 X PBS containing 0.5% BSA.

3. Paraformaldehyde-fixed, paraffin embedded (Human colon cancer); Antigen retrieval by boiling in sodium citrate buffer (pH6.0) for 15 min; Block endogenous peroxidase by 3% hydrogen peroxide for 20 min; Blocking buffer (normal goat serum) at 37°C for 30 min; Antibody incubation with (BTN2A1) Polyclonal Antibody, Unconjugated (TMAB-00255) at 1:400 overnight at 4°C, followed by a conjugated secondary for 20 min and DAB staining.





Application: FCM,IF,IHC-Fr,IHC-P

Recommended IHC-P: 1:100-500; IHC-Fr: 1:100-500; IF: 1:100-500; FCM: 3µg/Test

### Properties

Stability & Storage: Store at -20°C or -80°C for 12 months. Avoid repeated freeze-thaw cycles.

Shipping: Shipping with blue ice.

### Antigen Details

Immunogen: KLH conjugated synthetic peptide: human BTN2A1

Antigen Species: Human

Gene ID: 11120

Uniprot ID: Q7KYR7

Synonyms: BTN2A1;BTF1;BT2.1;Butyrophilin subfamily 2 member A1

Biology Area: Lipid metabolism,Channels

### Research Background

This gene encodes a member of the immunoglobulin superfamily. The gene is located in a cluster of butyrophilin-like genes in the juxta-telomeric region of the major histocompatibility complex on chromosome 6. A pseudogene of this gene has been identified in this cluster. The encoded protein is an integral plasma membrane protein involved in lipid, fatty-acid, and sterol metabolism. Alterations in this gene may be associated with several disease states including metabolic syndrome. Multiple alternatively spliced transcript variants encoding different isoforms have been found for this gene. [provided by RefSeq, Jul 2013]

**Inhibitor · Natural Compounds · Compound Libraries · Recombinant Proteins**

This product is for Research Use Only· Not for Human or Veterinary or Therapeutic Use

Tel:781-999-4286 E\_mail:info@targetmol.com Address:34 Washington Street,Wellesley Hills,MA 02481