

## Anti-BSPII Polyclonal Antibody

## Product Details

Ig Type:	IgG
Reactivity:	Mouse,Rat (predicted:Human)
Molecular Weight:	Theoretical: 34 kDa. Actual: 35 kDa.
Purification:	Protein A purified

## Applications

## Sample:

Lane 1: Bone (Mouse) Lysate at 40 µg

Lane 2: Bone (Rat) Lysate at 40 µg

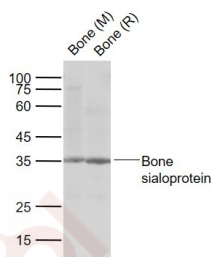
## Verified Activity:

Primary: Anti-Bone sialoprotein (TMAB-00253) at 1/500 dilution

Secondary: IRDye800CW Goat Anti-Rabbit IgG at 1/20000 dilution

Predicted band size: 34 kDa

Observed band size: 35 kDa



Application:	WB
Recommended	WB: 1:500-2000

## Properties

Stability & Storage:	Store at -20°C or -80°C for 12 months. Avoid repeated freeze-thaw cycles.
Shipping:	Shipping with blue ice.

## Antigen Details

Immunogen:	KLH conjugated synthetic peptide: human Bone sialoprotein II
Antigen Species:	Human
Gene ID:	3381
Uniprot ID:	P21815
Synonyms:	BNSP;SPII;BSP;BSP 2;BSP II;IBSP;BSP-II;SP II;SP-II
Biology Area:	Bone,Osteogenesis

## Research Background

The protein encoded by this gene is a major structural protein of the bone matrix. It constitutes approximately 12% of the noncollagenous proteins in human bone and is synthesized by skeletal-associated cell types, including

## A DRUG SCREENING EXPERT

---

hypertrophic chondrocytes, osteoblasts, osteocytes, and osteoclasts. The only extraskeletal site of its synthesis is the trophoblast. This protein binds to calcium and hydroxyapatite via its acidic amino acid clusters, and mediates cell attachment through an RGD sequence that recognizes the vitronectin receptor. [provided by RefSeq, Jul 2008]

**Inhibitor · Natural Compounds · Compound Libraries · Recombinant Proteins**

This product is for Research Use Only · Not for Human or Veterinary or Therapeutic Use

Tel:781-999-4286 E\_mail:info@targetmol.com Address:34 Washington Street,Wellesley Hills,MA 02481