

## Anti-DEPDC1B/BRCC3 Polyclonal Antibody

### Product Details

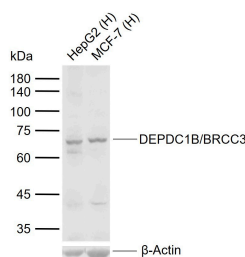
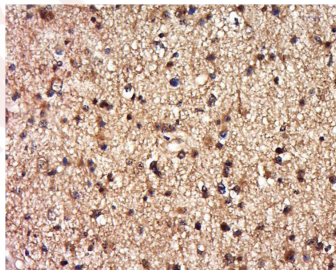
Ig Type: IgG  
Reactivity: Human (predicted:Mouse,Rat,Cow,Rabbit)  
Molecular Weight: Theoretical: 62 kDa. Actual: 68 kDa.  
Purification: Protein A purified

### Applications

1. Tissue/cell: human brain glioma; 4% Paraformaldehyde-fixed and paraffin-embedded; Antigen retrieval: citrate buffer (0.01M, pH6.0), Boiling bathing for 15 min; Block endogenous peroxidase by 3% Hydrogen peroxide for 30 min; Blocking buffer (normal goat serum) at 37°C for 20 min;  
Incubation: Anti-BRCC3 Polyclonal Antibody, Unconjugated (TMAB-00249) 1:500, overnight at 4°C, followed by conjugation to the secondary antibody and DAb staining.

Verified Activity:

2. Sample:  
Lane 1: Human HepG2 cell lysates  
Lane 2: Human MCF-7 cell lysates  
Primary: Anti-DEPDC1B/BRCC3 (TMAB-00249) at 1/1000 dilution  
Secondary: IRDye800CW Goat Anti-Rabbit IgG at 1/20000 dilution  
Predicted band size: 62 kDa  
Observed band size: 68 kDa



Application: IF,IHC-Fr,IHC-P,WB

Recommended WB: 1:500-2000; IHC-P: 1:100-500; IHC-Fr: 1:100-500; IF: 1:100-500

## A DRUG SCREENING EXPERT

---

### Properties

Stability & Storage: Store at -20°C or -80°C for 12 months. Avoid repeated freeze-thaw cycles.

Shipping: Shipping with blue ice.

---

### Antigen Details

Immunogen: KLH conjugated synthetic peptide: human DEPDC1B

Antigen Species: Human

Gene ID: 55789

Uniprot ID: Q8WUY9

Synonyms: DEP domain-containing protein 1B;HBV X-transactivated gene 8 protein;HBV XAg-transactivated protein 8;BRCC 3

Biology Area: Regulators

---

### Research Background

GTPase activator activity. biological process: intracellular signaling cascade

**Inhibitor · Natural Compounds · Compound Libraries · Recombinant Proteins**

This product is for Research Use Only. Not for Human or Veterinary or Therapeutic Use

Tel:781-999-4286 E\_mail:info@targetmol.com Address:34 Washington Street,Wellesley Hills,MA 02481