

Anti-Bovine Serum Albumin Polyclonal Antibody

Product Details

Ig Type: IgG
Reactivity: Human, Mouse, Rat, Cow, Goat
Molecular Weight: Theoretical: 69 kDa. Actual: 69 kDa.
Purification: Protein A purified

Applications

1. Sample:

Lane 1: Serum (Human) at 20 µg

Lane 2: Serum (Mouse) at 20 µg

Lane 3: Serum (Rat) at 20 µg

Lane 4: Serum (Goat) at 20 µg

Lane 5: Serum (Cow) at 20 µg

Primary: Anti-Bovine Serum Albumin (TMAB-00247) at 1/1000 dilution

Secondary: IRDye800CW Goat Anti-Rabbit IgG at 1/20000 dilution

Predicted band size: 67 kDa

Observed band size: 67 kDa

Verified Activity:

2. Sample:

Serum (Cow) at 40 µg

Primary: Anti-Bovine Serum Albumin (TMAB-00247) at 1/1000 dilution

Secondary: IRDye800CW Goat Anti-Rabbit IgG at 1/20000 dilution

Predicted band size: 69 kDa

Observed band size: 69 kDa

3. Sample:

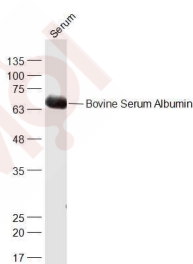
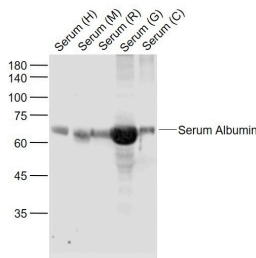
BSA (Cow) at 40 µg

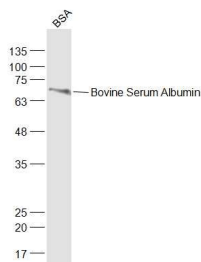
Primary: Anti-Bovine Serum Albumin (TMAB-00247) at 1/1000 dilution

Secondary: IRDye800CW Goat Anti-Rabbit IgG at 1/20000 dilution

Predicted band size: 69 kDa

Observed band size: 69 kDa





Application: WB

Recommended WB: 1:500-2000

Properties

Stability & Storage: Store at -20°C or -80°C for 12 months. Avoid repeated freeze-thaw cycles.

Shipping: Shipping with blue ice.

Antigen Details

Immunogen: Bovine Serum Albumin

Synonyms: ALB;ALBU_BOVIN;Allergen Bos d 6;Serum albumin;BSA;albumin

Biology Area: Endoderm,Other Chaperones,Lipid metabolism,Metabolic disorders,Signal transduction proteins ELISA kits,Endoderm,Serum Proteins

Research Background

This gene encodes the most abundant protein in human blood. This protein functions in the regulation of blood plasma colloid osmotic pressure and acts as a carrier protein for a wide range of endogenous molecules including hormones, fatty acids, and metabolites, as well as exogenous drugs. Additionally, this protein exhibits an esterase-like activity with broad substrate specificity. The encoded preproprotein is proteolytically processed to generate the mature protein. A peptide derived from this protein, EPI-X4, is an endogenous inhibitor of the CXCR4 chemokine receptor. [provided by RefSeq, Jul 2016]

Inhibitor · Natural Compounds · Compound Libraries · Recombinant Proteins

This product is for Research Use Only · Not for Human or Veterinary or Therapeutic Use

Tel:781-999-4286 E_mail:info@targetmol.com Address:34 Washington Street,Wellesley Hills,MA 02481
