

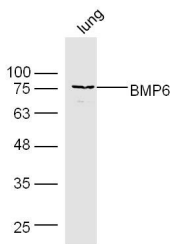
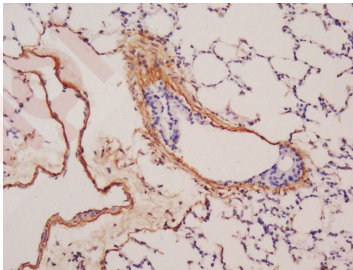
## Anti-BMP-6 Polyclonal Antibody

### Product Details

Ig Type:	IgG
Reactivity:	Mouse (predicted:Human,Rat,Chicken,Dog,Pig,Cow,Horse,Sheep)
Molecular Weight:	Theoretical: 16/56 kDa. Actual: 76 kDa.
Purification:	Protein A purified

### Applications

- Verified Activity:
1. Tissue/cell: mouse lung tissue; 4% Paraformaldehyde-fixed and paraffin-embedded; Antigen retrieval: citrate buffer (0.01M, pH6.0), Boiling bathing for 15 min; Block endogenous peroxidase by 3% Hydrogen peroxide for 30 min; Blocking buffer (normal goat serum) at 37°C for 20 min; Incubation: Anti-BMP6 Polyclonal Antibody, Unconjugated (TMAB-00244) 1:200, overnight at 4°C, followed by conjugation to the secondary antibody and DAb staining.
  2. Sample:  
Lung (Mouse) Lysate at 40 µg  
Primary: Anti-BMP6 (TMAB-00244) at 1/300 dilution  
Secondary: IRDye800CW Goat Anti-Rabbit IgG at 1/20000 dilution  
Predicted band size: 16/56 kDa  
Observed band size: 76 kDa



Application:	IF,IHC-Fr,IHC-P,WB
Recommended	WB: 1:500-2000; IHC-P: 1:100-500; IHC-Fr: 1:100-500; IF: 1:100-500

### Properties

Stability & Storage: Store at -20°C or -80°C for 12 months. Avoid repeated freeze-thaw cycles.

Shipping: Shipping with blue ice.

---

### Antigen Details

Immunogen: KLH conjugated synthetic peptide: human BMP6

Antigen Species: Human

Gene ID: 654

Uniprot ID: P22004

Synonyms: VG-1-related protein (VG-1-R;VGR-1);BMP6;Bone morphogenetic protein 6;BMP-6;VGR

Biology Area: Cell differentiation,Bone,TGF,Secreted

---

### Research Background

This gene encodes a secreted ligand of the TGF-beta (transforming growth factor-beta) superfamily of proteins. Ligands of this family bind various TGF-beta receptors leading to recruitment and activation of SMAD family transcription factors that regulate gene expression. The encoded preproprotein is proteolytically processed to generate each subunit of the disulfide-linked homodimer. This protein regulates a wide range of biological processes including iron homeostasis, fat and bone development, and ovulation. Differential expression of this gene may be associated with progression of breast and prostate cancer. Mutations in this gene may be associated with iron overload in human patients. [provided by RefSeq, Jul 2016]

**Inhibitor · Natural Compounds · Compound Libraries · Recombinant Proteins**

This product is for Research Use Only · Not for Human or Veterinary or Therapeutic Use

Tel:781-999-4286 E\_mail:info@targetmol.com Address:34 Washington Street,Wellesley Hills,MA 02481