

## Anti-BMP-4 Polyclonal Antibody

### Product Details

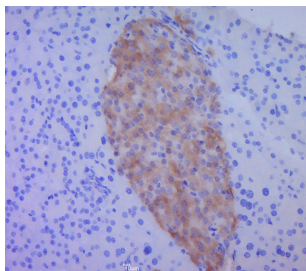
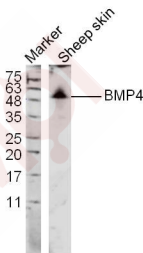
Ig Type: IgG  
Reactivity: Mouse, Sheep (predicted: Human, Rat)  
Molecular Weight: Theoretical: 13/45 kDa. Actual: 50 kDa.  
Purification: Protein A purified

### Applications

1. Sample:  
Sheep skin (Sheep) Lysate at 40 µg  
Primary: Anti-BMP4 (TMAB-00243) at 1/300 dilution  
Secondary: IRDye800CW Goat Anti-Rabbit IgG at 1/20000 dilution  
Predicted band size: 13/45 kDa

Verified Activity: Observed band size: 50 kDa

2. Paraformaldehyde-fixed, paraffin embedded (mouse pancreas tissue); Antigen retrieval by boiling in sodium citrate buffer (pH6.0) for 15 min; Block endogenous peroxidase by 3% hydrogen peroxide for 20 min; Blocking buffer (normal goat serum) at 37°C for 30 min; Antibody incubation with (BMP4) Polyclonal Antibody, Unconjugated (TMAB-00243) at 1:400 overnight at 4°C, followed by a conjugated secondary for 20 min and DAB staining.



Application: IF, IHC-Fr, IHC-P, WB

Recommended: WB: 1:500-2000; IHC-P: 1:100-500; IHC-Fr: 1:100-500; IF: 1:100-500

## A DRUG SCREENING EXPERT

---

### Properties

Stability & Storage: Store at -20°C or -80°C for 12 months. Avoid repeated freeze-thaw cycles.

Shipping: Shipping with blue ice.

---

### Antigen Details

Immunogen: KLH conjugated synthetic peptide: human BMP4

Antigen Species: Human

Gene ID: 652

Uniprot ID: P12644

Synonyms: BMP2B1;BMP2B;MCOPS6;ZYME;bone morphogenetic protein 4;OFC11

Biology Area: TGF,TGF,Kidney development,Gut specification,Nervous system development,TGF,Secreted

---

### Research Background

BMPs (bone morphogenetic proteins) belong to the TGF beta superfamily of structurally related signaling proteins. Members of this superfamily are widely represented throughout the animal kingdom and have been implicated in a variety of developmental processes. Proteins of the TGF beta superfamily are disulfide-linked dimers composed of two 12-15 kDa polypeptide chains. As implied by their name, BMPs initiate, promote and regulate bone development, growth, remodeling and repair. Smad1 translocation to the nucleus is observed after the addition of BMP4 (also designated BMP2B), suggesting that BMP4 may play a role in activation of the Smad pathway. BMP is secreted into the extracellular matrix.

**Inhibitor · Natural Compounds · Compound Libraries · Recombinant Proteins**

This product is for Research Use Only · Not for Human or Veterinary or Therapeutic Use

Tel:781-999-4286 E\_mail:info@targetmol.com Address:34 Washington Street,Wellesley Hills,MA 02481