

Anti-BMP-2 Polyclonal Antibody 2

Product Details

Ig Type:	IgG
Reactivity:	Human, Mouse, Rat (predicted: Chicken, Dog, Pig, Cow, Horse, Guinea Pig)
Molecular Weight:	Theoretical: 13/44 kDa. Actual: 60 kDa.
Purification:	Protein A purified

Applications

1. Tissue/cell: rat stomach tissue; 4% Paraformaldehyde-fixed and paraffin-embedded; Antigen retrieval: citrate buffer (0.01M, pH6.0), Boiling bathing for 15 min; Block endogenous peroxidase by 3% Hydrogen peroxide for 30 min; Blocking buffer (normal goat serum) at 37°C for 20 min; Incubation: Anti-BMP2 Polyclonal Antibody, Unconjugated (TMAB-00242) 1:200, overnight at 4°C, followed by conjugation to the secondary antibody and DAb staining.

2. Sample:

A431 (Human) Cell Lysate at 30 µg

Hela (Human) Cell Lysate at 30 µg

Verified Activity:

Primary: Anti-BMP2 (TMAB-00242) at 1/300 dilution

Secondary: IRDye800CW Goat Anti-Rabbit IgG at 1/20000 dilution

Predicted band size: 13/44 kDa

Observed band size: 64 kDa

3. Sample:

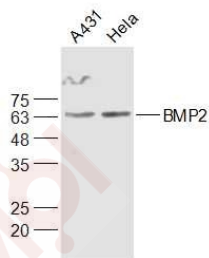
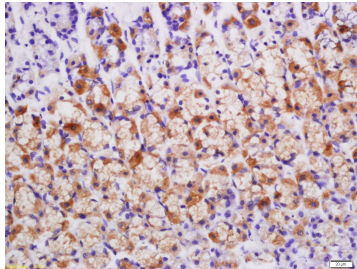
Stomach (Mouse) Lysate at 40 µg

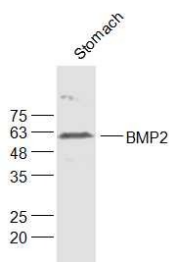
Primary: Anti-BMP2 (TMAB-00242) at 1/300 dilution

Secondary: IRDye800CW Goat Anti-Rabbit IgG at 1/20000 dilution

Predicted band size: 13/44 kDa

Observed band size: 59 kDa





Application: IF,IHC-Fr,IHC-P,WB

Recommended WB: 1:500-2000; IHC-P: 1:100-500; IHC-Fr: 1:100-500; IF: 1:100-500

Properties

Stability & Storage: Store at -20°C or -80°C for 12 months. Avoid repeated freeze-thaw cycles.

Shipping: Shipping with blue ice.

Antigen Details

Immunogen: KLH conjugated synthetic peptide: human BMP2

Antigen Species: Human

Gene ID: 650

Uniprot ID: P12643

Synonyms: Bone morphogenetic protein 2A (BMP-2A);BMP2;Bone morphogenetic protein 2;BMP-2;BMP2A

Biology Area: TGF,TGF,Bone,TGF,Extracellular,Secreted

Research Background

BMP2 belongs to the transforming growth factor-beta (TGFB) superfamily of secreted growth factors. It is a disulfide-linked homodimer and induces bone and cartilage formation. In addition to its osteogenic activity, BMP2 plays an important role in cardiac morphogenesis and is expressed in a variety of tissues including lung, spleen, brain, liver, prostate ovary and small intestine. The functional form of BMP2 is a 26 kDa protein composed of two identical 114 amino acid polypeptide chains linked by a single disulfide bond. BMPs control fundamental events in early embryonic development, organogenesis and adult tissue homeostasis.

Inhibitor · Natural Compounds · Compound Libraries · Recombinant Proteins

This product is for Research Use Only · Not for Human or Veterinary or Therapeutic Use

Tel:781-999-4286 E_mail:info@targetmol.com Address:34 Washington Street,Wellesley Hills,MA 02481