

## Anti-BMP-2 Polyclonal Antibody

### Product Details

Ig Type:	IgG
Reactivity:	Human,Mouse,Rat (predicted:Chicken,Dog,Cow,Horse,Rabbit,Sheep)
Molecular Weight:	Theoretical: 13/44 kDa. Actual: 60 kDa.
Purification:	Protein A purified

### Applications

#### 2. Sample:

Lane 1: U2os (Human) Cell Lysate at 30  $\mu$ g  
Lane 2: MG63 (Human) Cell Lysate at 30  $\mu$ g  
Lane 3: Huvec (Human) Cell Lysate at 30  $\mu$ g

#### Primary:

Anti-BMP2 (TMAB-00241) at 1/300 dilution

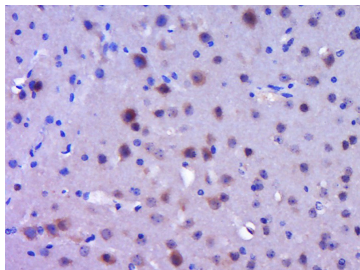
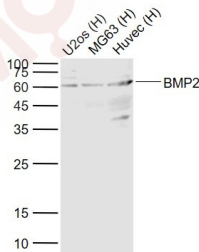
Secondary: IRDye800CW Goat Anti-Rabbit IgG at 1/20000 dilution

Predicted band size: 45 kDa

Observed band size: 60 kDa

3. Paraformaldehyde-fixed, paraffin embedded (Mouse brain); Antigen retrieval by boiling in sodium citrate buffer (pH6.0) for 15 min; Block endogenous peroxidase by 3% hydrogen peroxide for 20 min; Blocking buffer (normal goat serum) at 37°C for 30 min; Antibody incubation with (BMP2) Polyclonal Antibody, Unconjugated (TMAB-00241) at 1:400 overnight at 4°C, followed by operating according to SP Kit (Rabbit) instructions and DAB staining.

#### Verified Activity:



Application: IF,IHC-Fr,IHC-P,WB

Recommended WB: 1:500-2000; IHC-P: 1:100-500; IHC-Fr: 1:100-500; IF: 1:100-500

### Properties

Stability & Storage: Store at -20°C or -80°C for 12 months. Avoid repeated freeze-thaw cycles.

Shipping: Shipping with blue ice.

---

### Antigen Details

Immunogen: KLH conjugated synthetic peptide: human BMP2

Antigen Species: Human

Gene ID: 650

Uniprot ID: P12643

Synonyms: Bone morphogenetic protein 2A (BMP-2A);BMP-2;BMP2;Bone morphogenetic protein 2;BMP2A

Biology Area: TGF,TGF,Bone,TGF,Extracellular,Secreted

---

### Research Background

BMP2 belongs to the transforming growth factor-beta (TGFB) superfamily of secreted growth factors. It is a disulfide-linked homodimer and induces bone and cartilage formation. In addition to its osteogenic activity, BMP2 plays an important role in cardiac morphogenesis and is expressed in a variety of tissues including lung, spleen, brain, liver, prostate ovary and small intestine. The functional form of BMP2 is a 26 kDa protein composed of two identical 114 amino acid polypeptide chains linked by a single disulfide bond. BMPs control fundamental events in early embryonic development, organogenesis and adult tissue homeostasis.

**Inhibitor · Natural Compounds · Compound Libraries · Recombinant Proteins**

This product is for Research Use Only · Not for Human or Veterinary or Therapeutic Use

Tel:781-999-4286 E\_mail:info@targetmol.com Address:34 Washington Street,Wellesley Hills,MA 02481

---