

Anti-BMP-1 Polyclonal Antibody

Product Details

Ig Type:	IgG
Reactivity:	Human, Mouse, Rat (predicted: Dog, Pig, Cow, Horse, Rabbit)
Molecular Weight:	Theoretical: 98 kDa. Actual: 100 kDa.
Purification:	Protein A purified

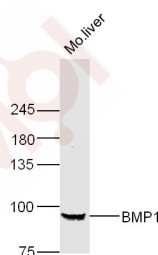
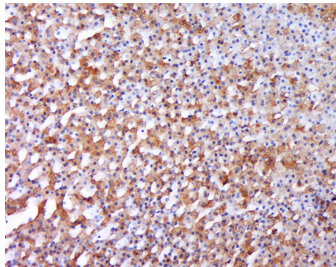
Applications

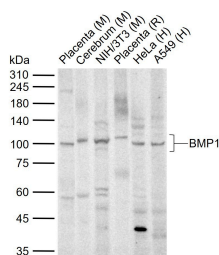
1. Tissue/cell: Rat adrenal gland; 4% Paraformaldehyde-fixed and paraffin-embedded; Antigen retrieval: citrate buffer (0.01M, pH6.0), Boiling bathing for 15 min; Block endogenous peroxidase by 3% Hydrogen peroxide for 30 min; Blocking buffer (normal goat serum) at 37°C for 20 min; Incubation: Anti-BMP1 Polyclonal Antibody, Unconjugated (TMAB-00240) 1:500, overnight at 4°C, followed by conjugation to the secondary antibody and DAb staining.

2. Sample: Liver (Mouse) Lysate at 40 µg
Primary: Anti-BMP1 (TMAB-00240) at 1/300 dilution
Secondary: IRDye800CW Goat Anti-Rabbit IgG at 1/20000 dilution
Predicted band size: 98 kDa
Observed band size: 98 kDa

Verified Activity:

3. Sample:
Lane 1: Mouse Placenta tissue lysates
Lane 2: Mouse Cerebrum tissue lysates
Lane 3: Mouse NIH/3T3 cell lysates
Lane 4: Rat Placenta tissue lysates
Lane 5: Human HeLa cell lysates
Lane 6: Human A549 cell lysates
Primary: Anti-BMP1 (TMAB-00240) at 1/1000 dilution
Secondary: IRDye800CW Goat Anti-Rabbit IgG at 1/20000 dilution
Predicted band size: 98 kDa
Observed band size: 100 kDa





Application: IF,IHC-Fr,IHC-P,WB

Recommended WB: 1:500-2000; IHC-P: 1:100-500; IHC-Fr: 1:100-500; IF: 1:100-500

Properties

Stability & Storage: Store at -20°C or -80°C for 12 months. Avoid repeated freeze-thaw cycles.

Shipping: Shipping with blue ice.

Antigen Details

Immunogen: KLH conjugated synthetic peptide: human BMP1

Antigen Species: Human

Gene ID: 649

Uniprot ID: P13497

Synonyms: Mammalian tolloid protein (mTld);BMP-1;Procollagen C-proteinase (PCP);Bone morphogenetic protein 1;PCOLC;BMP1

Biology Area: Metabolism of lipids and lipoproteins,Cell differentiation,BMPs,Lipid metabolism,MMP, Collagen,Bone

Research Background

Bone morphogenetic protein 1 (BMP1) was first identified in osteogenic extracts of bone. It is an extracellular zinc endopeptidase, implicated in morphogenetic processes in a broad range of species. BMP1 is a member of the astacin family of metalloproteinases. The astacin family includes BMP1, astacin, meprin A and B, tolloid-like proteins, and choriolysin. BMP1 is involved in extracellular matrix (ECM) formation, suggesting that a functional link may exist between astacin metalloproteinases, growth factors, and cell differentiation and pattern formation during development. The name PCP reflects this enzyme's involvement in the collagen deposition of growing bone. The enzymes known as the procollagen C and N proteinases (PCP and PNP) are involved in the processing of fibrillar procollagen precursors to mature collagens, which is an essential requirement for fibril formation. PCP cleaves the C-terminus from procollagen, to allow the formation of mature, triplehelical collagen. The N-terminus is cleaved by the procollagen N-proteinase (PNP or ADAM-TS2). Defects in PNP have been linked to the skin disorder dermatosparaxis, and defects in BMP1 are thought to lead to aberrant collagen processing, and connective tissue disorders. Many forms of BMP1 have been reported, with varying truncation at the C-terminus. The long form of BMP1 is most similar to the tolloid-like proteins, which have extra EGF-like and CUB domains.

Inhibitor · Natural Compounds · Compound Libraries · Recombinant Proteins

This product is for Research Use Only · Not for Human or Veterinary or Therapeutic Use

Tel:781-999-4286 E_mail:info@targetmol.com Address:34 Washington Street,Wellesley Hills,MA 02481