

Anti-BMAL1 Antibody (6E793)

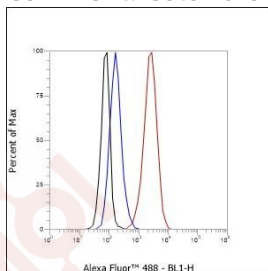
Product Details

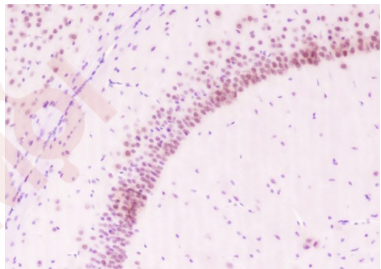
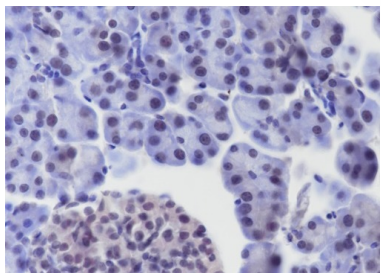
| | |
|-------------------|---|
| Ig Type: | IgG |
| Reactivity: | Human,Mouse,Rat |
| Molecular Weight: | Theoretical: 69 kDa. Actual: 73-75 kDa. |
| Clone: | 6E793 |
| Purification: | Protein A purified |

Applications

1. Cell line: SH-SY5Y
Fixation: 4% Paraformaldehyde
Permeabilization: 90% Methanol
Primary dilution: 1:100
Secondary: Goat Anti-Rabbit IgG
Unlabelled control: The cell without incubation with primary antibody and secondary antibody (Black line).
Isotype control: Rabbit monoclonal IgG (Blue line).
Comment: Line red is the positive signal for TMAB-00239
2. Tissue: Mouse pancreas
Section type: Formalin fixed & Paraffin-embedded section
Retrieval method: High temperature and high pressure
Retrieval buffer: Tris/EDTA buffer, pH9.0 Primary dilution: 1:1000
Primary incubation condition: 1 hour at room temperature
Secondary: SP Kit (Rabbit)
Counter stain: Hematoxylin (Blue)
Comment: Color brown is the positive signal for TMAB-00239
3. Tissue: Mouse hippocampus
Section type: Formalin fixed & Paraffin-embedded section
Retrieval method: High temperature and high pressure
Retrieval buffer: Tris/EDTA buffer, pH9.0 Primary dilution: 1:1000
Primary incubation condition: 1 hour at room temperature
Secondary: SP Kit (Rabbit)
Counter stain: Hematoxylin (Blue)
Comment: Color brown is the positive signal for TMAB-00239

Verified Activity:





Application: FCM,WB

Recommended FCM=1:50-100; WB=1:500-2000

Properties

Stability & Storage: Store at -20°C or -80°C for 12 months. Avoid repeated freeze-thaw cycles.

Shipping: Shipping with blue ice.

Antigen Details

Immunogen: KLH conjugated synthetic peptide: human BMAL1

Antigen Species: Human

Gene ID: 406

Uniprot ID: O00327

Synonyms: PAS domain-containing protein 3;Brain and muscle ARNT-like 1;ARNTL;Aryl hydrocarbon receptor nuclear translocator-like protein 1;BMAL1;Member of PAS protein 3;Class E basic helix-loop-helix protein 5(bHLHe5);Basic helix-loop-helix ARNT-like protein 1;PASD3;ARNTL1;BHLHE5;TIC;MOP3;BMAL1c;bHLH-PAS protein JAP3;Basic-helix-loop-helix-PAS protein MOP3

Biology Area: Blood Pressure regulation,Cardiac metabolism,Cholesterol Metabolism,HLH,Transcription Factors,Cholesterol Metabolism,Metabolism

Research Background

The protein encoded by this gene is a basic helix-loop-helix protein that forms a heterodimer with CLOCK. This heterodimer binds E-box enhancer elements upstream of Period (PER1, PER2, PER3) and Cryptochrome (CRY1, CRY2) genes and activates transcription of these genes. PER and CRY proteins heterodimerize and repress their own transcription by interacting in a feedback loop with CLOCK/ARNTL complexes. Defects in this gene have been linked to infertility, problems with gluconeogenesis and lipogenesis, and altered sleep patterns. The protein regulates interferon-stimulated gene expression and is an important factor in viral infection, including COVID-19. [provided by RefSeq, Oct 2021]

Inhibitor · Natural Compounds · Compound Libraries · Recombinant Proteins

This product is for Research Use Only · Not for Human or Veterinary or Therapeutic Use

Tel:781-999-4286 E_mail:info@targetmol.com Address:34 Washington Street,Wellesley Hills,MA 02481