

Beta-Tubulin Loading Control Polyclonal Antibody

Product Details

Ig Type:	IgG
Reactivity:	Human,Mouse,Rat
Molecular Weight:	Theoretical: 50 kDa. Actual: 48 kDa.
Purification:	Protein A purified

Applications

1. Blank control: HL-60. Primary Antibody (green line): Rabbit Anti-Beta tubulin antibody (TMAB-00236)

Dilution: 1 µg/10⁶ cells;

Isotype Control Antibody (orange line): Rabbit IgG.

Secondary Antibody: Goat anti-rabbit IgG-AF488

Dilution: 1 µg/test.

Protocol

The cells were fixed with 4% PFA (10 min at room temperature) and then permeabilized with 0.1%PBST for 20 min at room temperature. The cells were then incubated in 5% BSA to block non-specific protein-protein interactions for 30 min at room temperature. Cells stained with Primary Antibody for 30 min at room temperature. The secondary antibody used for 40 min at room temperature.

2. Sample:

Lane 1,3,5: Mouse Cerebellum tissue lysates

Lane 2,4,6: Rat Cerebellum tissue lysates

Primary: Anti-Beta tubulin (TMAB-00236) at 1/10000~1/50000 dilution

Secondary: HRP conjugated Goat Anti-Rabbit IgG at 1/20000 dilution

Verified Activity: Predicted band size: 50 kDa

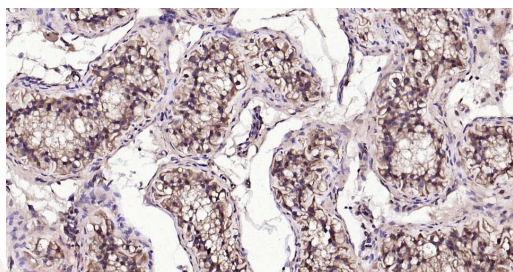
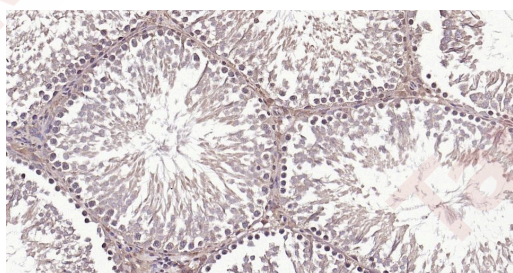
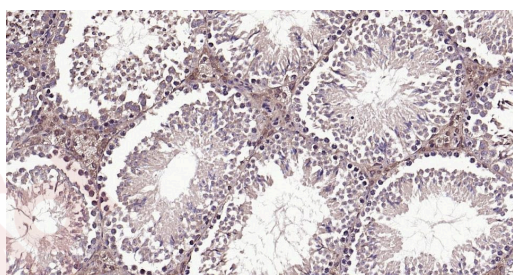
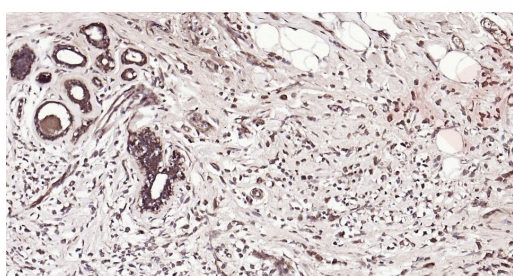
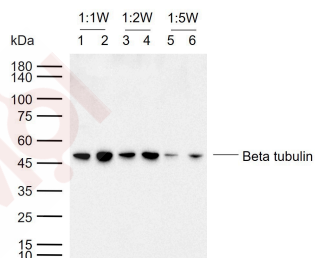
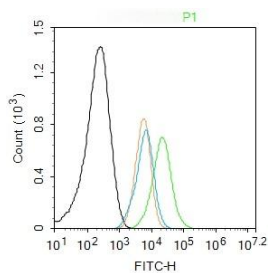
Observed band size: 48 kDa

3. Paraformaldehyde-fixed, paraffin embedded Human Breast Cancer; Antigen retrieval by boiling in sodium citrate buffer (pH6.0) for 15 min; Antibody incubation with Beta tubulin Polyclonal Antibody, Unconjugated (TMAB-00236) at 1:200 overnight at 4°C, followed by conjugation to the SP Kit (Rabbit) and DAB staining.

4. Paraformaldehyde-fixed, paraffin embedded Mouse Testicles; Antigen retrieval by boiling in sodium citrate buffer (pH6.0) for 15 min; Antibody incubation with Beta tubulin Polyclonal Antibody, Unconjugated (TMAB-00236) at 1:200 overnight at 4°C, followed by conjugation to the SP Kit (Rabbit) and DAB staining.

5. Paraformaldehyde-fixed, paraffin embedded Rat Testicles; Antigen retrieval by boiling in sodium citrate buffer (pH6.0) for 15 min; Antibody incubation with Beta tubulin Polyclonal Antibody, Unconjugated (TMAB-00236) at 1:200 overnight at 4°C, followed by conjugation to the SP Kit (Rabbit) and DAB staining.

6. Paraformaldehyde-fixed, paraffin embedded Human Testicles; Antigen retrieval by boiling in sodium citrate buffer (pH6.0) for 15 min; Antibody incubation with Beta tubulin Polyclonal Antibody, Unconjugated (TMAB-00236) at 1:200 overnight at 4°C, followed by conjugation to the SP Kit (Rabbit) and DAB staining.



Application: FCM,IF,IHC-Fr,IHC-P,WB

Recommended WB: 1:10000-100000; IHC-P: 1:100-500; IHC-Fr: 1:100-500; IF: 1:100-500; FCM: 1ug/Test

Properties

Stability & Storage: Store at -20°C or -80°C for 12 months. Avoid repeated freeze-thaw cycles.

Shipping: Shipping with blue ice.

Antigen Details

Immunogen: KLH conjugated synthetic peptide: human tubulin Beta

Antigen Species: Human

Gene ID: 203068

Uniprot ID: P07437

Synonyms: TUBB5;TUBB;Tubulin beta-5 chain;Tubulin beta chain

Biology Area: Microtubules,Tubulin

Research Background

This gene encodes a beta tubulin protein. This protein forms a dimer with alpha tubulin and acts as a structural component of microtubules. Mutations in this gene cause cortical dysplasia, complex, with other brain malformations 6. Alternative splicing results in multiple splice variants. There are multiple pseudogenes for this gene on chromosomes 1, 6, 7, 8, 9, and 13. [provided by RefSeq, Jun 2014]

Inhibitor · Natural Compounds · Compound Libraries · Recombinant Proteins

This product is for Research Use Only · Not for Human or Veterinary or Therapeutic Use

Tel:781-999-4286 E_mail:info@targetmol.com Address:34 Washington Street,Wellesley Hills,MA 02481