

## Beta-Tubulin Loading Control Antibody (8M945)

### Product Details

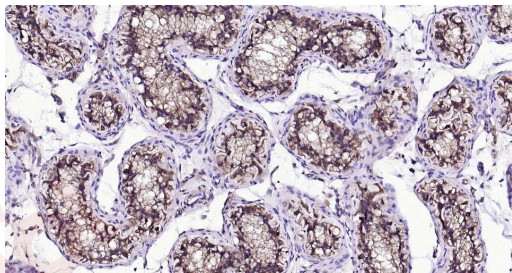
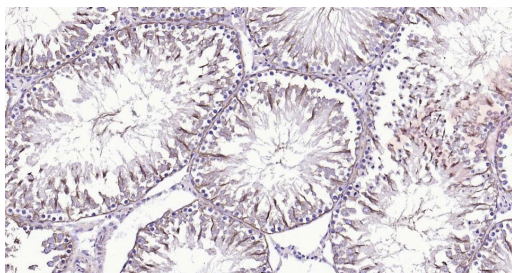
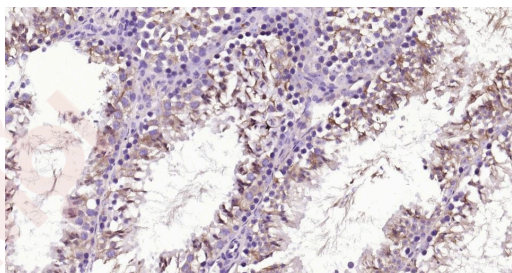
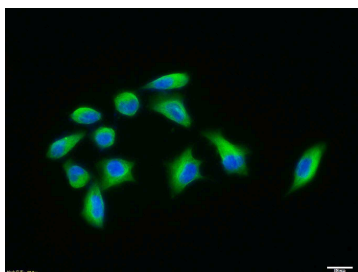
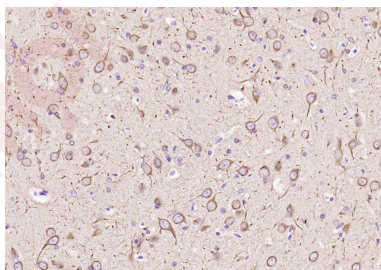
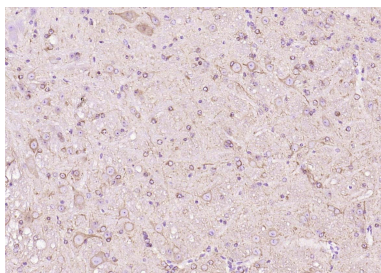
Ig Type:	IgG1
Reactivity:	Human, Mouse, Rat (predicted: Chicken, Dog, Pig, Cow, Rabbit, Sheep, Guinea Pig, Monkey, Insect/Yeast)
Molecular Weight:	Theoretical: 50 kDa. Actual: 50 kDa.
Clone:	8M945
Purification:	Protein G purified

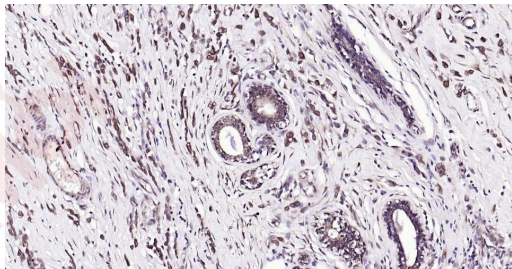
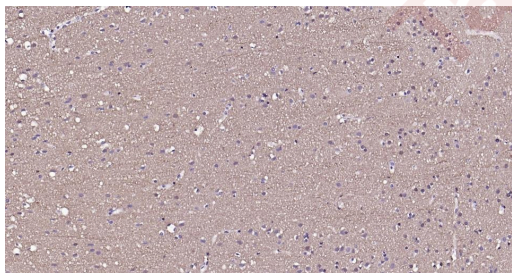
### Applications

1. Paraformaldehyde-fixed, paraffin embedded (mouse cerebellum); Antigen retrieval by boiling in sodium citrate buffer (pH6.0) for 15 min; Block endogenous peroxidase by 3% hydrogen peroxide for 20 min; Blocking buffer (normal goat serum) at 37°C for 30 min; Antibody incubation with (Beta tubulin (Loading Control)) Monoclonal Antibody, Unconjugated (ascites of TMAB-00235) at 1:2000 overnight at 4°C, followed by operating according to SP Kit (Mouse) instructions and DAB staining.
2. Paraformaldehyde-fixed, paraffin embedded (rat brain); Antigen retrieval by boiling in sodium citrate buffer (pH6.0) for 15 min; Block endogenous peroxidase by 3% hydrogen peroxide for 20 min; Blocking buffer (normal goat serum) at 37°C for 30 min; Antibody incubation with (Beta tubulin (Loading Control)) Monoclonal Antibody, Unconjugated (TMAB-00235) at 1:200 overnight at 4°C, followed by operating according to SP Kit (Mouse) instructions and DAB staining.
3. Hela cell; 4% Paraformaldehyde-fixed; Triton X-100 at room temperature for 20 min; Blocking buffer (normal goat serum) at 37°C for 20 min; Antibody incubation with (Beta tubulin) monoclonal Antibody, Unconjugated (TMAB-00235) 1:100, 90 minutes at 37°C; followed by a conjugated Goat Anti-Rabbit IgG antibody at 37°C for 90 minutes, DAPI (blue) was used to stain the cell nucleus.
4. Paraformaldehyde-fixed, paraffin embedded Mouse Testicles; Antigen retrieval by boiling in sodium citrate buffer (pH6.0) for 15 min; Antibody incubation with Beta tubulin Monoclonal Antibody, Unconjugated (TMAB-00235) at 1:200 overnight at 4°C, followed by conjugation to the SP Kit (Mouse) and DAB staining.
5. Paraformaldehyde-fixed, paraffin embedded Rat Testicles; Antigen retrieval by boiling in sodium citrate buffer (pH6.0) for 15 min; Antibody incubation with Beta tubulin Monoclonal Antibody, Unconjugated (TMAB-00235) at 1:200 overnight at 4°C, followed by conjugation to the SP Kit (Mouse) and DAB staining.
6. Paraformaldehyde-fixed, paraffin embedded Human Testicles; Antigen retrieval by boiling in sodium citrate buffer (pH6.0) for 15 min; Antibody incubation with Beta tubulin Monoclonal Antibody, Unconjugated (TMAB-00235) at 1:200 overnight at 4°C, followed by conjugation to the SP Kit (Mouse) and DAB staining.
7. Paraformaldehyde-fixed, paraffin embedded Human Cerebrum; Antigen retrieval by boiling in sodium citrate buffer (pH6.0) for 15 min; Antibody incubation with Beta tubulin Monoclonal Antibody, Unconjugated (TMAB-00235) at 1:200 overnight at 4°C, followed by conjugation to the SP Kit (Mouse) and DAB staining.
8. Paraformaldehyde-fixed, paraffin embedded Human Breast Cancer; Antigen retrieval by boiling in sodium citrate buffer (pH6.0) for 15 min; Antibody incubation with Beta tubulin Monoclonal Antibody, Unconjugated (TMAB-00235) at 1:200 overnight at 4°C, followed by

Verified Activity:

conjugation to the SP Kit (Mouse) and DAB staining.





Application: ICC/IF,IF,IHC-Fr,IHC-P,WB

Recommended ICC/IF=1:100-500; IF=1:100-500; IHC-Fr=1:100-500; IHC-P=1:100-500; WB=1:10000-50000

### Properties

Stability & Storage: Store at -20°C or -80°C for 12 months. Avoid repeated freeze-thaw cycles.

Shipping: Shipping with blue ice.

### Antigen Details

Immunogen: KLH conjugated synthetic peptide: human Beta tubulin

Antigen Species: Human

Gene ID: 203068

Uniprot ID: P07437

Synonyms: TUBB5;Tubulin beta chain;Tubulin beta-5 chain;TUBB

Biology Area: Microtubules,Tubulin

### Research Background

This gene encodes a beta tubulin protein. This protein forms a dimer with alpha tubulin and acts as a structural component of microtubules. Mutations in this gene cause cortical dysplasia, complex, with other brain malformations 6. Alternative splicing results in multiple splice variants. There are multiple pseudogenes for this gene on chromosomes 1, 6, 7, 8, 9, and 13. [provided by RefSeq, Jun 2014]

**Inhibitor · Natural Compounds · Compound Libraries · Recombinant Proteins**

This product is for Research Use Only · Not for Human or Veterinary or Therapeutic Use

Tel:781-999-4286 E\_mail:info@targetmol.com Address:34 Washington Street,Wellesley Hills,MA 02481