

Beta-Tubulin Loading Control Antibody (1L64)

Product Details

Ig Type:	IgG
Reactivity:	Human,Mouse,Rat
Molecular Weight:	Theoretical: 50 kDa. Actual: 50 kDa.
Clone:	1L64
Purification:	Protein A purified

Applications

1. Sample:

Lane 1: Mouse Cerebrum tissue lysates

Lane 2: Rat Cerebrum tissue lysates

Lane 3: Human U251 cell lysates

Lane 4: Human HeLa cell lysates

Lane 5: Human 293T cell lysates

Primary: Anti-beta Tubulin (TMAB-00234) at 1/20000 dilution

Secondary: IRDye800CW Goat Anti-Rabbit IgG at 1/20000 dilution

Predicted band size: 50 kDa

Observed band size: 50 kDa

2. Paraformaldehyde-fixed, paraffin embedded Mouse Testicles; Antigen retrieval by boiling in sodium citrate buffer (pH6.0) for 15 min; Antibody incubation with beta Tubulin Monoclonal Antibody, Unconjugated (TMAB-00234) at 1:200 overnight at 4°C, followed by conjugation to the SP Kit (Rabbit) and DAB staining.

3. Paraformaldehyde-fixed, paraffin embedded Rat Testicles; Antigen retrieval by boiling in sodium citrate buffer (pH6.0) for 15 min; Antibody incubation with beta Tubulin Monoclonal Antibody, Unconjugated (TMAB-00234) at 1:200 overnight at 4°C, followed by conjugation to the SP Kit (Rabbit) and DAB staining.

4. Paraformaldehyde-fixed, paraffin embedded Mouse Cerebrum; Antigen retrieval by boiling in sodium citrate buffer (pH6.0) for 15 min; Antibody incubation with beta Tubulin Monoclonal Antibody, Unconjugated (TMAB-00234) at 1:200 overnight at 4°C, followed by conjugation to the SP Kit (Rabbit) and DAB staining.

5. Paraformaldehyde-fixed, paraffin embedded Rat Cerebrum; Antigen retrieval by boiling in sodium citrate buffer (pH6.0) for 15 min; Antibody incubation with beta Tubulin Monoclonal Antibody, Unconjugated (TMAB-00234) at 1:200 overnight at 4°C, followed by conjugation to the SP Kit (Rabbit) and DAB staining.

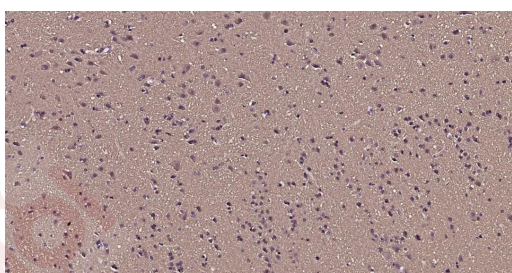
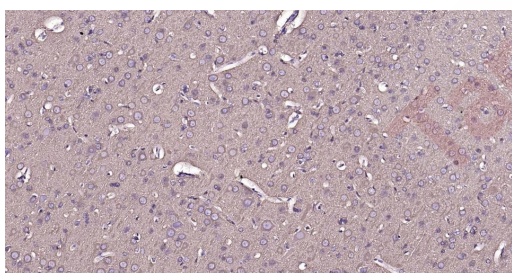
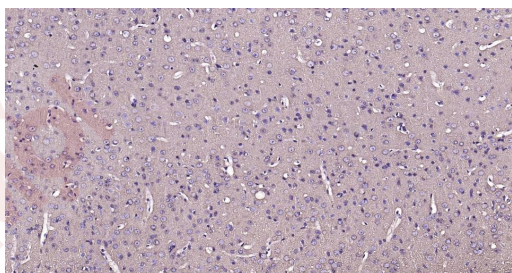
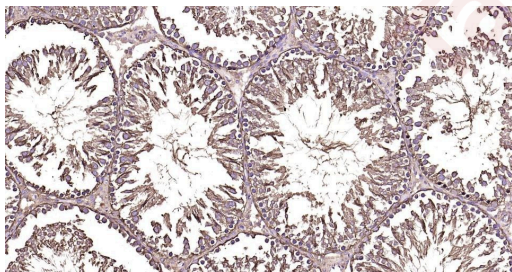
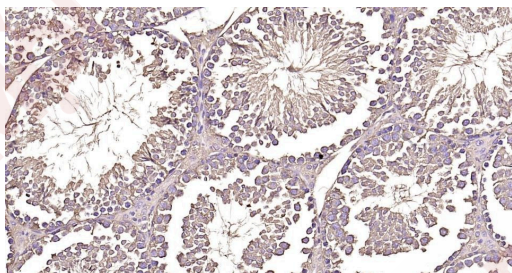
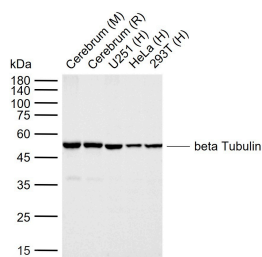
6. Paraformaldehyde-fixed, paraffin embedded Human Cerebrum; Antigen retrieval by boiling in sodium citrate buffer (pH6.0) for 15 min; Antibody incubation with beta Tubulin Monoclonal Antibody, Unconjugated (TMAB-00234) at 1:200 overnight at 4°C, followed by conjugation to the SP Kit (Rabbit) and DAB staining.

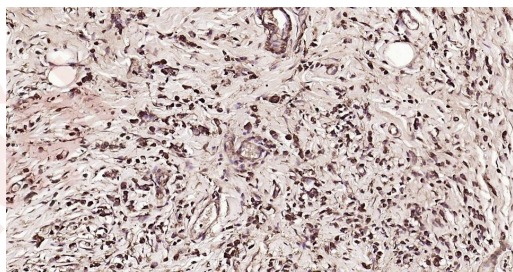
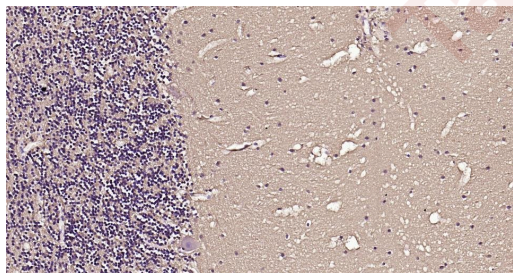
7. Paraformaldehyde-fixed, paraffin embedded Human Cerebellum; Antigen retrieval by boiling in sodium citrate buffer (pH6.0) for 15 min; Antibody incubation with beta Tubulin Monoclonal Antibody, Unconjugated (TMAB-00234) at 1:200 overnight at 4°C, followed by conjugation to the SP Kit (Rabbit) and DAB staining.

8. Paraformaldehyde-fixed, paraffin embedded Human Breast Cancer; Antigen retrieval by boiling in sodium citrate buffer (pH6.0) for 15 min; Antibody incubation with beta Tubulin

Verified Activity:

Monoclonal Antibody, Unconjugated (TMAB-00234) at 1:200 overnight at 4°C, followed by conjugation to the SP Kit (Rabbit) and DAB staining.





Application: IF,IHC-Fr,IHC-P,WB

Recommended WB: 1:2000-5000; IHC-P: 1:50-200; IHC-Fr: 1:50-200; IF: 1:50-200

Properties

Stability & Storage: Store at -20°C or -80°C for 12 months. Avoid repeated freeze-thaw cycles.

Shipping: Shipping with blue ice.

Antigen Details

Immunogen: A synthesized peptide: human beta Tubulin

Antigen Species: Human

Gene ID: 203068

Uniprot ID: P07437

Synonyms: Tubulin beta-5 chain;TUBB;TUBB5;Tubulin beta chain

Biology Area: Microtubules,Tubulin

Research Background

This gene encodes a beta tubulin protein. This protein forms a dimer with alpha tubulin and acts as a structural component of microtubules. Mutations in this gene cause cortical dysplasia, complex, with other brain malformations 6. Alternative splicing results in multiple splice variants. There are multiple pseudogenes for this gene on chromosomes 1, 6, 7, 8, 9, and 13. [provided by RefSeq, Jun 2014]

Inhibitor · Natural Compounds · Compound Libraries · Recombinant Proteins

This product is for Research Use Only · Not for Human or Veterinary or Therapeutic Use

Tel:781-999-4286 E_mail:info@targetmol.com Address:34 Washington Street,Wellesley Hills,MA 02481