

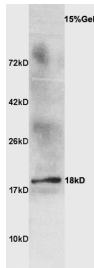
Anti-Beta-lactoglobulin Polyclonal Antibody

Product Details

Ig Type:	IgG
Reactivity:	Goat (predicted:Cow,Sheep)
Molecular Weight:	Theoretical: 18 kDa. Actual: 18 kDa.
Purification:	Protein A purified

Applications

Verified Activity:	Sample: Goat milk at 30 µg; Primary: Anti-Beta-lactoglobulin (TMAB-00232) at 1:300 dilution; Secondary: HRP conjugated Goat Anti-Rabbit IgG (secondary antibody) at 1: 3000 dilution; Predicted band size: 18 kDa Observed band size: 18 kDa
--------------------	--



Application:	WB
Recommended	WB: 1:500-2000

Properties

Stability & Storage:	Store at -20°C or -80°C for 12 months. Avoid repeated freeze-thaw cycles.
Shipping:	Shipping with blue ice.

Antigen Details

Immunogen:	Beta-lactoglobulin
Synonyms:	beta-lactoglobulin precursor;progestagen-associated endometrial protein;LGB;beta lactoglobulin B;Bos d 5;beta-LG;LACB_BOVIN;β Lactoglobulin;BLG;Lactoglobulin beta
Biology Area:	Lipid metabolism

Research Background

bov beta-lactoglobulin is the content of the milk in the category of a protein myosin. Protein contained in whole milk (3.7 percent) to 80% of the casein in the removal of the casein whey protein, 55% of the beta-lactoglobulin. Access to the crystallization of the isoelectric point = 5.2, the pH in this dual capacity under the main structure. The people in latex-free Beta-lactoglobulin. The beta-lactoglobulin and bov beta-lactoglobulinA-based.

Inhibitor · Natural Compounds · Compound Libraries · Recombinant Proteins

This product is for Research Use Only· Not for Human or Veterinary or Therapeutic Use

Tel:781-999-4286 E_mail:info@targetmol.com Address:34 Washington Street,Wellesley Hills,MA 02481