

Anti-Beta-Catenin Polyclonal Antibody

Product Details

Ig Type:	IgG
Reactivity:	Human,Mouse,Rat (predicted:Chicken,Dog,Pig,Cow,Horse,Rabbit,Zebrafish,Sheep)
Molecular Weight:	Theoretical: 9.5/86 kDa. Actual: 92 kDa.
Purification:	Protein A purified

Applications

1. Paraformaldehyde-fixed, paraffin embedded (mouse placenta tissue); Antigen retrieval by boiling in sodium citrate buffer (pH6.0) for 15 min; Block endogenous peroxidase by 3% hydrogen peroxide for 20 min; Blocking buffer (normal goat serum) at 37°C for 30 min; Antibody incubation with (Beta catenin) Polyclonal Antibody, Unconjugated (TMAB-00230) at 1:400 overnight at 4°C, followed by a conjugated secondary for 20 min and DAB staining.

Verified Activity:

2. Sample:

Cerebrum (Mouse) Lysate at 40 µg

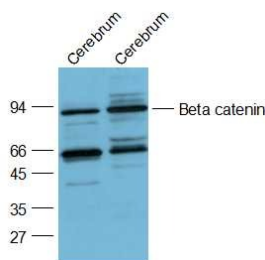
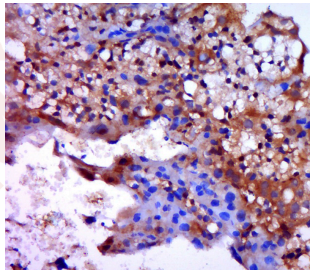
Cerebrum (Rat) Lysate at 40 µg

Primary: Anti-Beta catenin (TMAB-00230) at 1/2000 dilution

Secondary: IRDye800CW Goat Anti-Rabbit IgG at 1/20000 dilution

Predicted band size: 9.5/86 kDa

Observed band size: 86 kDa



Application: IF,IHC-Fr,IHC-P,WB

Recommended WB: 1:500-2000; IHC-P: 1:100-500; IHC-Fr: 1:100-500; IF: 1:100-500

Properties

Stability & Storage: Store at -20°C or -80°C for 12 months. Avoid repeated freeze-thaw cycles.

Shipping: Shipping with blue ice.

Antigen Details

Immunogen: KLH conjugated synthetic peptide: human Beta catenin

Antigen Species: Human

Gene ID: 1499

Uniprot ID: P35222

Synonyms: MRD19;PRO2286;beta-catenin;CTNNB;EVR7;armadillo;NEDSDV;OK/SW-cl.35

Biology Area: Cytoplasmic,Catenins,Cadherins,beta catenin,Neurogenesis,CHIP antibodies,Leukocyte recruitment,Cadherins

Research Background

The protein encoded by this gene is part of a complex of proteins that constitute adherens junctions (AJs). AJs are necessary for the creation and maintenance of epithelial cell layers by regulating cell growth and adhesion between cells. The encoded protein also anchors the actin cytoskeleton and may be responsible for transmitting the contact inhibition signal that causes cells to stop dividing once the epithelial sheet is complete. Finally, this protein binds to the product of the APC gene, which is mutated in adenomatous polyposis of the colon. Mutations in this gene are a cause of colorectal cancer (CRC), pilomatrixoma (PTR), medulloblastoma (MDB), and ovarian cancer. Three transcript variants encoding the same protein have been found for this gene.[provided by RefSeq, Oct 2009].

Inhibitor · Natural Compounds · Compound Libraries · Recombinant Proteins

This product is for Research Use Only · Not for Human or Veterinary or Therapeutic Use

Tel:781-999-4286 E_mail:info@targetmol.com Address:34 Washington Street,Wellesley Hills,MA 02481
