

Anti-Beta-Amyloid 1-42 Polyclonal Antibody

Product Details

Ig Type:	IgG
Reactivity:	Human (predicted:Mouse,Rat,Chicken,Dog,Pig,Cow,Rabbit)
Molecular Weight:	Theoretical: 4.4 kDa. Actual: 130 kDa.
Purification:	Protein A purified

Applications

Sample:

Lane 1: Human U87MG cell lysates

Lane 2: Human SY5Y cell lysates

Lane 3: Human U251 cell lysates

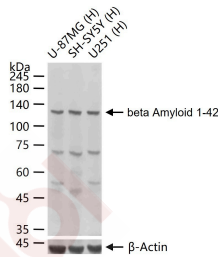
Verified Activity:

Primary: Anti-beta-beta Amyloid 1-42 (TMAB-00222) at 1/1000 dilution

Secondary: IRDye800CW Goat Anti-Rabbit IgG at 1/20000 dilution

Predicted band size: 4.3 kDa

Observed band size: 130 kDa



Application: IF,IHC-Fr,IHC-P,WB

Recommended WB: 1:500-2000; IHC-P: 1:100-500; IHC-Fr: 1:100-500; IF: 1:100-500

Properties

Stability & Storage: Store at -20°C or -80°C for 12 months. Avoid repeated freeze-thaw cycles.

Shipping: Shipping with blue ice.

Antigen Details

Immunogen: KLH conjugated synthetic peptide: human beta-Amyloid

Antigen Species: Human

Gene ID: 351

Uniprot ID: P05067

Synonyms: APP695;Amyloid Precursor Protein 695;Amyloid Precursor

Biology Area: Regulation,RNA Processing,DNA / RNA binding

Research Background

The cerebral and vascular plaques associated with Alzheimer's disease are mainly composed of Amyloid beta

peptides. beta Amyloid is derived from cleavage of the Amyloid precursor protein and varies in length from 39 to 43 amino acids. beta Amyloid [1-40], beta Amyloid [1-42], and beta Amyloid [1-43] peptides result from cleavage of Amyloid precursor protein after residues 40, 42, and 43, respectively. The cleavage takes place by gamma-secretase during the last Amyloid precursor protein processing step. beta Amyloid [1-40], beta Amyloid [1-42], and beta Amyloid [1-43] peptides are major constituents of the plaques and tangles that occur in Alzheimer's disease. beta Amyloid antibodies and peptides have been developed as tools for elucidating the biology of Alzheimer's disease.

Inhibitor · Natural Compounds · Compound Libraries · Recombinant Proteins

This product is for Research Use Only · Not for Human or Veterinary or Therapeutic Use

Tel:781-999-4286 E_mail:info@targetmol.com Address:34 Washington Street,Wellesley Hills,MA 02481