

## Anti-Beta-Amyloid 1-16 Polyclonal Antibody

### Product Details

Ig Type:	IgG
Reactivity:	Human (predicted:Pig)
Molecular Weight:	Theoretical: 4.3/83 kDa. Actual: 130 kDa.
Purification:	Protein A purified

### Applications

#### 1. Sample:

Lane 1: Human U87MG Cell Lysates

Lane 2: Human SY5Y cell lysates

Lane 3: Human U251 Cell Lysates

Primary: Anti-beta Amyloid 1-16 (TMAB-00218) at 1/1000 dilution

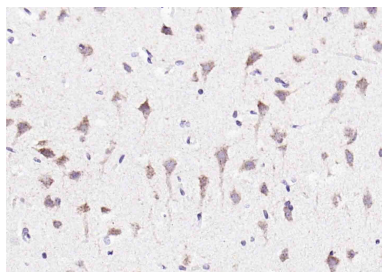
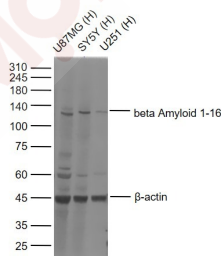
Secondary: IRDye800CW Goat Anti-Mouse IgG at 1/20000 dilution

Predicted band size: 4.3/83 kDa

Observed band size: 130 kDa

#### Verified Activity:

2. Paraformaldehyde-fixed, paraffin embedded (rat brain); Antigen retrieval by boiling in sodium citrate buffer (pH6.0) for 15 min; Block endogenous peroxidase by 3% hydrogen peroxide for 20 min; Blocking buffer (normal goat serum) at 37°C for 30 min; Antibody incubation with (beta Amyloid 1-16) Monoclonal Antibody, Unconjugated (TMAB-00218) at 1:200 overnight at 4°C, followed by operating according to SP Kit (Mouse) instructions and DAB staining.



Application:	WB
Recommended	WB=1:500-2000

### Properties

Stability & Storage: Store at -20°C or -80°C for 12 months. Avoid repeated freeze-thaw cycles.

Shipping: Shipping with blue ice.

---

### Antigen Details

Immunogen: KLH conjugated synthetic peptide: human beta-Amyloid

Antigen Species: Human

Gene ID: 351

Uniprot ID: P05067

Synonyms: Amyloid Precursor Protein 695;APP695;Amyloid Precursor

Biology Area: Regulation, RNA Processing, DNA / RNA binding

---

### Research Background

The cerebral and vascular plaques associated with Alzheimer's disease are mainly composed of Amyloid beta peptides. beta Amyloid is derived from cleavage of the Amyloid precursor protein and varies in length from 39 to 43 amino acids. beta Amyloid [1-40], beta Amyloid [1-42], and beta Amyloid [1-43] peptides result from cleavage of Amyloid precursor protein after residues 40, 42, and 43, respectively. The cleavage takes place by gamma-secretase during the last Amyloid precursor protein processing step. beta Amyloid [1-40], beta Amyloid [1-42], and beta Amyloid [1-43] peptides are major constituents of the plaques and tangles that occur in Alzheimer's disease. beta Amyloid antibodies and peptides have been developed as tools for elucidating the biology of Alzheimer's disease.

**Inhibitor · Natural Compounds · Compound Libraries · Recombinant Proteins**

This product is for Research Use Only · Not for Human or Veterinary or Therapeutic Use

Tel: 781-999-4286 E\_mail: info@targetmol.com Address: 34 Washington Street, Wellesley Hills, MA 02481