

Beta-Actin Loading Control Polyclonal Antibody 2

Product Details

Ig Type:	IgG
Reactivity:	Human, Mouse, Rat (predicted: Pig, Cow, Sheep)
Molecular Weight:	Theoretical: 42 kDa. Actual: 42 kDa.
Purification:	Protein A purified

Applications

1. Sample:

Lane1: HeLa (Human) Whole Cell Lysate at 30 µg
Lane2: Jurkat (Human) Whole Cell Lysate at 30 µg
Lane3: 293T (Human) Whole Cell Lysate at 30 µg
Lane4: HepG2 (Human) Whole Cell Lysate at 30 µg
Lane5: A431 (Human) Whole Cell Lysate at 30 µg
Lane6: A549 (Human) Whole Cell Lysate at 30 µg
Lane7: H9C2 (Rat) Whole Cell Lysate at 30 µg
Lane8: Testis (Mouse) Tissue Lysate at 30 µg
Primary: Anti-F-Actin (TMAB-00217) at 1/300 dilution
Secondary: IRDye800CW Goat Anti-Rabbit IgG at 1/20000 dilution
Predicted band size: 42 kDa
Observed band size: 42 kDa

2. Blank control (blue line): HeLa (blue).

Primary Antibody (green line): Rabbit Anti-F-Actin antibody (TMAB-00217)
Dilution: 3 µg/10⁶ cells;
Isotype Control Antibody (orange line): Rabbit IgG.
Secondary Antibody (white blue line): Goat anti-rabbit IgG-PE
Dilution: 1 µg/test.

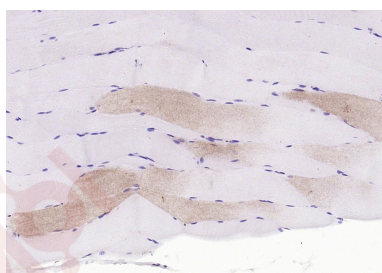
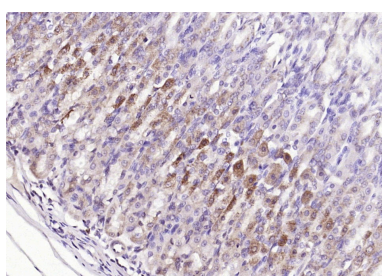
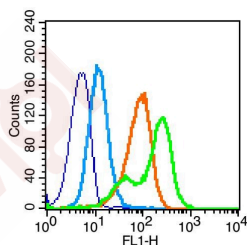
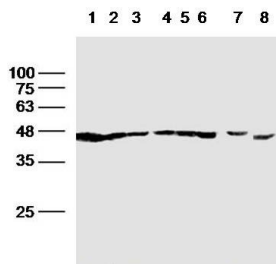
Verified Activity:

Protocol

The cells were fixed with 80% methanol (5 min at -20°C) and then permeabilized with 0.1% PBS-Tween for 20 min at room temperature. Cells stained with Primary Antibody for 30 min at room temperature. The cells were then incubated in 1 X PBS/2% BSA/10% goat serum to block non-specific protein-protein interactions followed by the antibody for 15 min at room temperature. The secondary antibody used for 40 min at room temperature.

3. Paraformaldehyde-fixed, paraffin embedded (rat stomach); Antigen retrieval by boiling in sodium citrate buffer (pH6.0) for 15 min; Block endogenous peroxidase by 3% hydrogen peroxide for 20 min; Blocking buffer (normal goat serum) at 37°C for 30 min; Antibody incubation with (F-Actin) Polyclonal Antibody, Unconjugated (TMAB-00217) at 1:200 overnight at 4°C, followed by operating according to SP Kit (Rabbit) instructions and DAB staining.

4. Paraformaldehyde-fixed, paraffin embedded (rat skeletal muscle); Antigen retrieval by boiling in sodium citrate buffer (pH6.0) for 15 min; Block endogenous peroxidase by 3% hydrogen peroxide for 20 min; Blocking buffer (normal goat serum) at 37°C for 30 min; Antibody incubation with (F-Actin) Polyclonal Antibody, Unconjugated (TMAB-00217) at 1:200 overnight at 4°C, followed by operating according to SP Kit (Rabbit) instructions and DAB staining.



Application: FCM,IF,IHC-Fr,IHC-P,WB

Recommended WB: 1:1000-5000; IHC-P: 1:100-500; IHC-Fr: 1:100-500; IF: 1:100-500; FCM: 3µg /test

Properties

Stability & Storage: Store at -20°C or -80°C for 12 months. Avoid repeated freeze-thaw cycles.

Shipping: Shipping with blue ice.

Antigen Details

Immunogen: Synthetic MAP peptide: human beta-Actin

Antigen Species: Human

Gene ID: 60

Uniprot ID: P60709

Synonyms: β-actin;Actin Cytoplasmic 1;Beta-Actin;β-Actin Protein;ACTB

Biology Area: Actin,Actin,Beta Actin

Research Background

Actin is a highly conserved protein and an essential component of cell cytoskeleton and plays an important role in cytoplasmic streaming, cell shape determination, cell division, organelle movement and extension growth. Preferentially expressed in young and expanding tissues, floral organ primordia, developing seeds and emerging inflorescence. Antibodies against plant Actin are useful as loading controls for Western Blotting.

Inhibitor · Natural Compounds · Compound Libraries · Recombinant Proteins

This product is for Research Use Only · Not for Human or Veterinary or Therapeutic Use

Tel:781-999-4286 E_mail:info@targetmol.com Address:34 Washington Street,Wellesley Hills,MA 02481