

Beta-Actin Loading Control Polyclonal Antibody

Product Details

Ig Type:	IgG
Reactivity:	Human,Mouse,Rat (predicted:Chicken,Dog,Pig,Rabbit,Sheep,Bee,Fish,GuineaPig,Hamster,Cat)
Molecular Weight:	Theoretical: 42 kDa. Actual: 42 kDa.
Purification:	Protein A purified

Applications

1. Sample: Embryo Cerebrum (Mouse) Lysate at 40 µg
Du145 (Human) Lysate at 40 µg
SW480 (Human) Cell Lysate at 40 µg
U87MG (Human) Lysate at 40 µg
U251 (Human) Lysate at 40 µg
A673 (Human) Lysate at 40 µg
LOVO (Human) Lysate at 40 µg
293FT (Human) Lysate at 40 µg
JEG-3 (Human) Lysate at 40 µg
RSC96 (Rat) Cell Lysate at 40 µg
MCF-7 (Human) Cell Lysate at 40 µg
HepG2 (Human) Lysate at 40 µg
A431 (Human) Lysate at 40 µg
Primary: Anti-beta-Actin (TMAB-00216) at 1/2000 dilution
Secondary: IRDye800CW Goat Anti-Rabbit IgG at 1/20000 dilution
Predicted band size: 42 kDa
Observed band size: 42 kDa
2. MCF7 cell; 4% Paraformaldehyde-fixed; Triton X-100 at room temperature for 20 min; Blocking buffer (normal goat serum) at 37°C for 20 min; Antibody incubation with (beta-Actin) polyclonal Antibody, Unconjugated (TMAB-00216) 1:100, 90 minutes at 37°C; followed by a conjugated Goat Anti-Rabbit IgG antibody at 37°C for 90 minutes, DAPI (blue) was used to stain the cell nucleus.
3. Sample:
SH-SY5Y (Human) Lysate at 40 µg
Primary:
Anti-beta-Actin (TMAB-00216) at 1/2000~1/20000 dilution
Secondary: IRDye800CW Goat Anti-Rabbit IgG at 1/20000 dilution
Predicted band size: 42 kDa
Observed band size: 42 kDa
4. Blank control: NIH/3T3. Primary Antibody (green line): Rabbit Anti-beta-Actin (Loading Control) antibody (TMAB-00216)
Dilution: 1 µg/10⁶ cells;
Isotype Control Antibody (orange line): Rabbit IgG.
Secondary Antibody: Goat anti-rabbit IgG-AF488
Dilution: 1 µg/test.
Protocol
The cells were fixed with 4% PFA (10 min at room temperature) and then permeabilized with 90% ice-cold methanol for 20 min at -20°C. The cells were then incubated in 5% BSA to block
- Verified Activity:

non-specific protein-protein interactions for 30 min at room temperature. Cells stained with Primary Antibody for 30 min at room temperature. The secondary antibody used for 40 min at room temperature.

5. Tissue/cell: Hela cell; 4% Paraformaldehyde-fixed; Triton X-100 at room temperature for 20 min; Blocking buffer (normal goat serum) at 37°C for 20 min; Antibody incubation with (beta-Actin) polyclonal Antibody, Unconjugated (TMAB-00216) 1:100, 90 minutes at 37°C; followed by a conjugated Goat Anti-Rabbit IgG-FITC antibody at 37°C for 90 minutes, DAPI (blue) was used to stain the cell nucleus.

6. Paraformaldehyde-fixed, paraffin embedded Mouse Lung; Antigen retrieval by boiling in sodium citrate buffer (pH6.0) for 15 min; Antibody incubation with beta-Actin Polyclonal Antibody, Unconjugated (TMAB-00216) at 1:200 overnight at 4°C, followed by conjugation to the SP Kit (Rabbit) and DAB staining.

7. Paraformaldehyde-fixed, paraffin embedded Rat Lung; Antigen retrieval by boiling in sodium citrate buffer (pH6.0) for 15 min; Antibody incubation with beta-Actin Polyclonal Antibody, Unconjugated (TMAB-00216) at 1:200 overnight at 4°C, followed by conjugation to the SP Kit (Rabbit) and DAB staining.

8. Paraformaldehyde-fixed, paraffin embedded Mouse Colon; Antigen retrieval by boiling in sodium citrate buffer (pH6.0) for 15 min; Antibody incubation with beta-Actin Polyclonal Antibody, Unconjugated (TMAB-00216) at 1:200 overnight at 4°C, followed by conjugation to the SP Kit (Rabbit) and DAB staining.

9. Paraformaldehyde-fixed, paraffin embedded Rat Colon; Antigen retrieval by boiling in sodium citrate buffer (pH6.0) for 15 min; Antibody incubation with beta-Actin Polyclonal Antibody, Unconjugated (TMAB-00216) at 1:200 overnight at 4°C, followed by conjugation to the SP Kit (Rabbit) and DAB staining.

10. Paraformaldehyde-fixed, paraffin embedded Human Colon; Antigen retrieval by boiling in sodium citrate buffer (pH6.0) for 15 min; Antibody incubation with beta-Actin Polyclonal Antibody, Unconjugated (TMAB-00216) at 1:200 overnight at 4°C, followed by conjugation to the SP Kit (Rabbit) and DAB staining.

11. Paraformaldehyde-fixed, paraffin embedded Mouse Uterus; Antigen retrieval by boiling in sodium citrate buffer (pH6.0) for 15 min; Antibody incubation with beta-Actin Polyclonal Antibody, Unconjugated (TMAB-00216) at 1:200 overnight at 4°C, followed by conjugation to the SP Kit (Rabbit) and DAB staining.

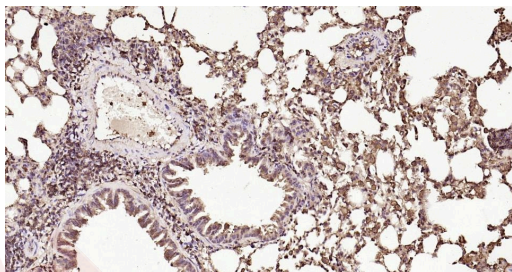
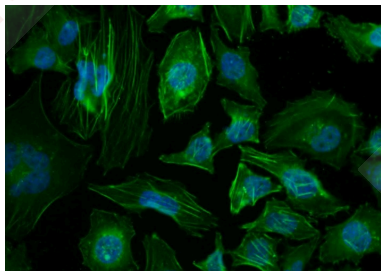
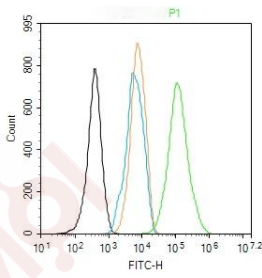
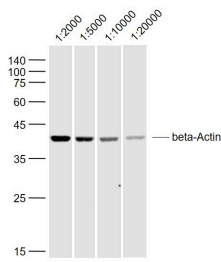
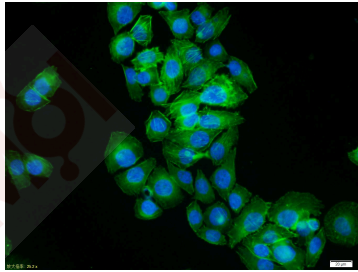
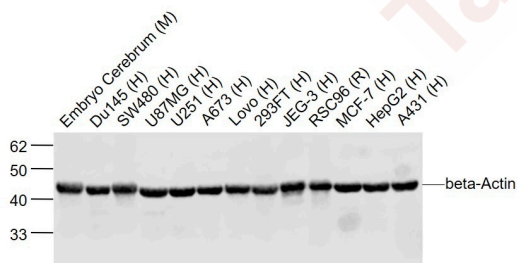
12. Paraformaldehyde-fixed, paraffin embedded Rat Uterus; Antigen retrieval by boiling in sodium citrate buffer (pH6.0) for 15 min; Antibody incubation with beta-Actin Polyclonal Antibody, Unconjugated (TMAB-00216) at 1:200 overnight at 4°C, followed by conjugation to the SP Kit (Rabbit) and DAB staining.

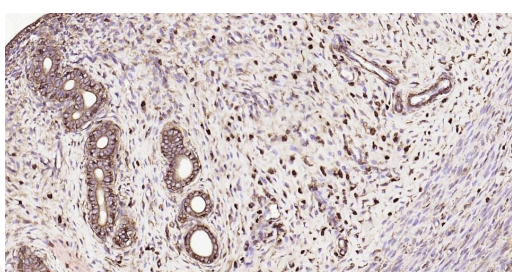
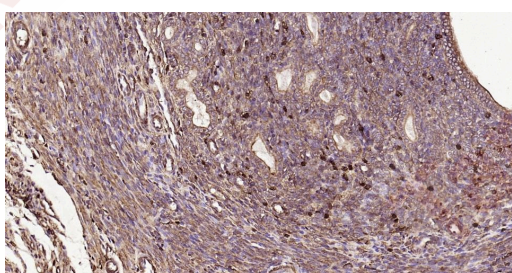
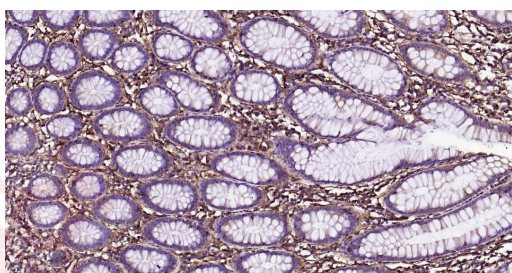
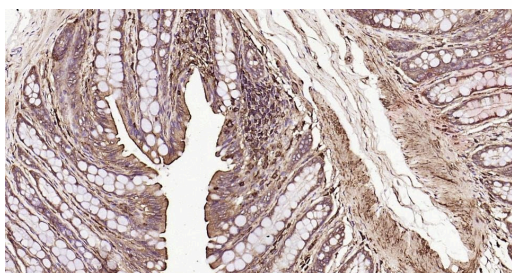
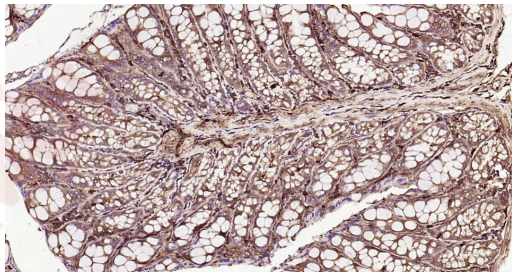
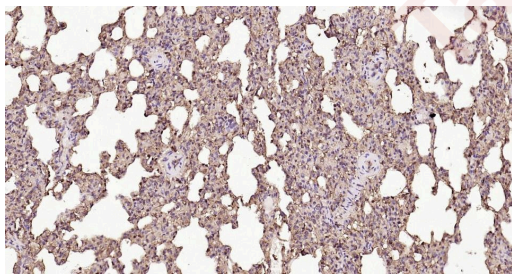
13. Paraformaldehyde-fixed, paraffin embedded Human Uterus; Antigen retrieval by boiling in sodium citrate buffer (pH6.0) for 15 min; Antibody incubation with beta-Actin Polyclonal Antibody, Unconjugated (TMAB-00216) at 1:200 overnight at 4°C, followed by conjugation to the SP Kit (Rabbit) and DAB staining.

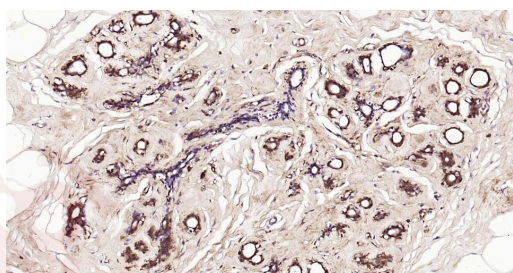
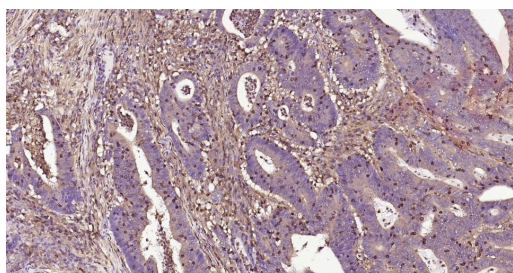
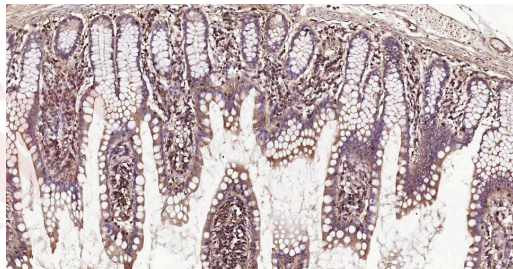
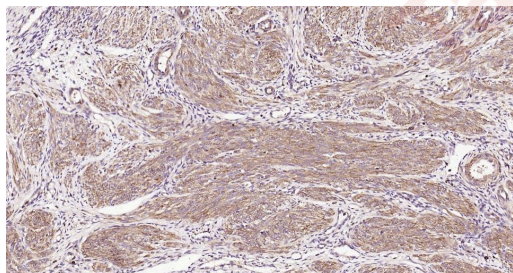
14. Paraformaldehyde-fixed, paraffin embedded Human Small Intestine; Antigen retrieval by boiling in sodium citrate buffer (pH6.0) for 15 min; Antibody incubation with beta-Actin Polyclonal Antibody, Unconjugated (TMAB-00216) at 1:200 overnight at 4°C, followed by conjugation to the SP Kit (Rabbit) and DAB staining.

15. Paraformaldehyde-fixed, paraffin embedded Human Colon Cancer; Antigen retrieval by boiling in sodium citrate buffer (pH6.0) for 15 min; Antibody incubation with beta-Actin Polyclonal Antibody, Unconjugated (TMAB-00216) at 1:200 overnight at 4°C, followed by conjugation to the SP Kit (Rabbit) and DAB staining.

16. Paraformaldehyde-fixed, paraffin embedded Human Breast Cancer; Antigen retrieval by boiling in sodium citrate buffer (pH6.0) for 15 min; Antibody incubation with beta-Actin Polyclonal Antibody, Unconjugated (TMAB-00216) at 1:200 overnight at 4°C, followed by conjugation to the SP Kit (Rabbit) and DAB staining.







Application: FCM,ICC/IF,IF,IHC-Fr,IHC-P,WB

Recommended WB: 1:5000-50000; IHC-P: 1:200-1000; IHC-Fr: 1:200-1000; ICC/IF: 1:100-500; IF: 1:200-1000; FCM: 1µg/Test

Properties

Stability & Storage: Store at -20°C or -80°C for 12 months. Avoid repeated freeze-thaw cycles.

Shipping: Shipping with blue ice.

Antigen Details

Immunogen: Synthetic MAP peptide: human beta-Actin

Antigen Species: Human

Gene ID: 60

Uniprot ID: P60709

Synonyms: Beta-Actin;β-Actin Protein;Actin Cytoplasmic 1;β-actin;ACTB

Biology Area: Actin,Actin,Beta Actin

Research Background

Actin is a highly conserved protein and an essential component of cell cytoskeleton and plays an important role in cytoplasmic streaming, cell shape determination, cell division, organelle movement and extension growth. Preferentially expressed in young and expanding tissues, floral organ primordia, developing seeds and emerging inflorescence. Antibodies against plant Actin are useful as loading controls for Western Blotting.

Inhibitor · Natural Compounds · Compound Libraries · Recombinant Proteins

This product is for Research Use Only · Not for Human or Veterinary or Therapeutic Use

Tel:781-999-4286 E_mail:info@targetmol.com Address:34 Washington Street,Wellesley Hills,MA 02481