

Beta-Actin Loading Control Antibody (1W773)

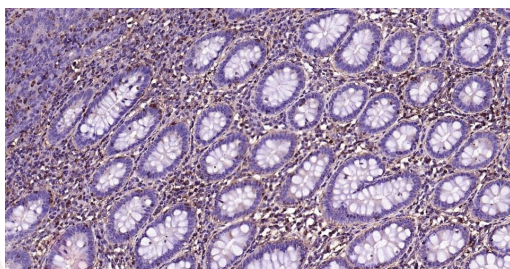
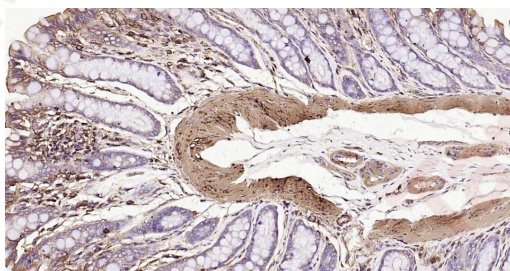
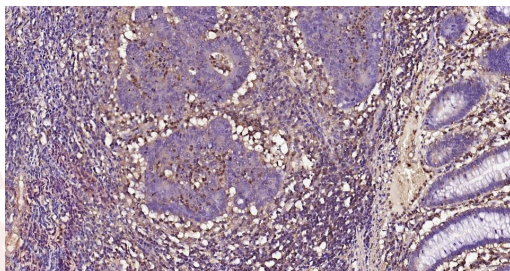
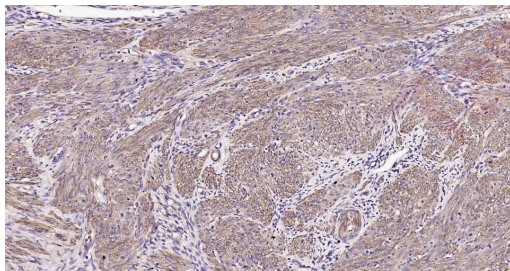
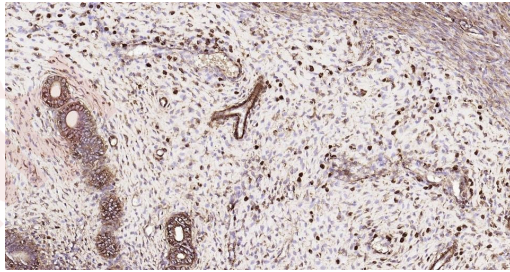
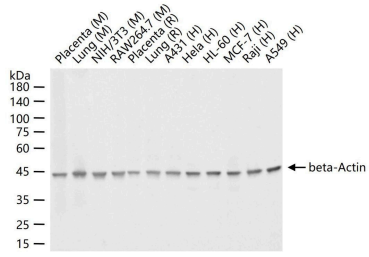
Product Details

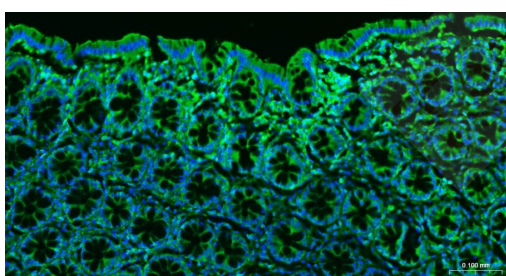
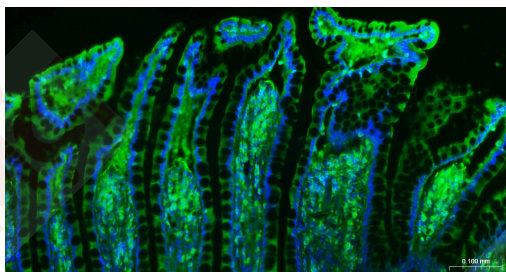
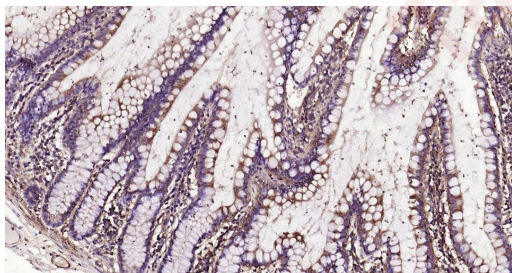
Ig Type:	IgG
Reactivity:	Human,Mouse,Rat (predicted:Chicken,Dog,Rabbit,Hamster,Monkey)
Molecular Weight:	Theoretical: 42 kDa. Actual: 42 kDa.
Clone:	1W773
Purification:	Protein G purified

Applications

Verified Activity:

1. 25 µg total protein per Lane of various lysates probed with beta-Actin monoclonal antibody, unconjugated (TMAB-00215) at 1:1000 dilution and 4°C overnight incubation. Followed by conjugated secondary antibody incubation at RT for 60 min.
2. Paraformaldehyde-fixed, paraffin embedded Rat Uterus; Antigen retrieval by boiling in sodium citrate buffer (pH6.0) for 15 min; Antibody incubation with beta-Actin Monoclonal Antibody, Unconjugated (TMAB-00215) at 1:200 overnight at 4°C, followed by conjugation to the SP Kit (Mouse) and DAB staining.
3. Paraformaldehyde-fixed, paraffin embedded Human Uterus; Antigen retrieval by boiling in sodium citrate buffer (pH6.0) for 15 min; Antibody incubation with beta-Actin Monoclonal Antibody, Unconjugated (ascites of TMAB-00215) at 1:1500 overnight at 4°C, followed by conjugation to the SP Kit (Mouse) and DAB staining.
4. Paraformaldehyde-fixed, paraffin embedded Human Colon Cancer; Antigen retrieval by boiling in sodium citrate buffer (pH6.0) for 15 min; Antibody incubation with beta-Actin Monoclonal Antibody, Unconjugated (TMAB-00215) at 1:200 overnight at 4°C, followed by conjugation to the SP Kit (Mouse) and DAB staining.
5. Paraformaldehyde-fixed, paraffin embedded Rat Colon; Antigen retrieval by boiling in sodium citrate buffer (pH6.0) for 15 min; Antibody incubation with beta-Actin Monoclonal Antibody, Unconjugated (ascites of TMAB-00215) at 1:1500 overnight at 4°C, followed by conjugation to the SP Kit (Mouse) and DAB staining.
6. Paraformaldehyde-fixed, paraffin embedded Human Colon; Antigen retrieval by boiling in sodium citrate buffer (pH6.0) for 15 min; Antibody incubation with beta-Actin Monoclonal Antibody, Unconjugated (ascites of TMAB-00215) at 1:1500 overnight at 4°C, followed by conjugation to the SP Kit (Mouse) and DAB staining.
7. Paraformaldehyde-fixed, paraffin embedded Human Small Intestine; Antigen retrieval by boiling in sodium citrate buffer (pH6.0) for 15 min; Antibody incubation with beta-Actin Monoclonal Antibody, Unconjugated (ascites of TMAB-00215) at 1:1500 overnight at 4°C, followed by conjugation to the SP Kit (Mouse) and DAB staining.
8. Paraformaldehyde-fixed, paraffin embedded Human Small Intestine; Antigen retrieval by boiling in sodium citrate buffer (pH6.0) for 15 min; Antibody incubation with beta-Actin Monoclonal Antibody, Unconjugated (TMAB-00215) at 1:1000 overnight at 4°C. Followed by conjugated Goat Anti-Mouse IgG antibody (green), DAPI (blue) was used to stain the cell nucleus.
9. Paraformaldehyde-fixed, paraffin embedded Human Colon; Antigen retrieval by boiling in sodium citrate buffer (pH6.0) for 15 min; Antibody incubation with beta-Actin Monoclonal Antibody, Unconjugated (TMAB-00215) at 1:1000 overnight at 4°C. Followed by conjugated Goat Anti-Mouse IgG antibody (green), DAPI (blue) was used to stain the cell nucleus.





Application: IF,IHC-Fr,IHC-P,WB

Recommended IF=1:200-2000; IHC-Fr=1:200-2000; IHC-P=1:200-2000; WB=1:1000-5000

Properties

Stability & Storage: Store at -20°C or -80°C for 12 months. Avoid repeated freeze-thaw cycles.

Shipping: Shipping with blue ice.

Antigen Details

Immunogen: Synthetic MAP peptide: human beta-Actin

Antigen Species: Human

Gene ID: 60

Uniprot ID: P60709

Synonyms: ACTB;Actin Cytoplasmic 1; β -Actin Protein; β -actin;Beta-Actin

Biology Area: Actin,Actin,Beta Actin

Research Background

Actin is a highly conserved protein and an essential component of cell cytoskeleton and plays an important role in cytoplasmic streaming, cell shape determination, cell division, organelle movement and extension growth. Preferentially expressed in young and expanding tissues, floral organ primordia, developing seeds and emerging inflorescence. Antibodies against plant Actin are useful as loading controls for Western Blotting.

Inhibitor · Natural Compounds · Compound Libraries · Recombinant Proteins

This product is for Research Use Only · Not for Human or Veterinary or Therapeutic Use

Tel:781-999-4286 E_mail:info@targetmol.com Address:34 Washington Street,Wellesley Hills,MA 02481