

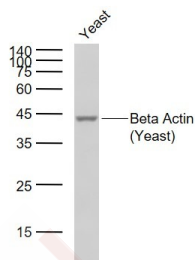
## Beta-Actin (Yeast) Loading Control Polyclonal Antibody

### Product Details

Ig Type: IgG  
 Reactivity: Yeast  
 Molecular Weight: Theoretical: 42 kDa. Actual: 42 kDa.  
 Purification: Protein A purified

### Applications

Sample:  
 Lane 1: Yeast lysates  
 Verified Activity:  
 Primary: Anti-Beta Actin (Yeast) (TMAB-00214) at 1/1000 dilution  
 Secondary: IRDye800CW Goat Anti-Rabbit IgG at 1/20000 dilution  
 Predicted band size: 42 kDa  
 Observed band size: 42 kDa



Application: WB  
 Recommended WB: 1:1000-5000

### Properties

Stability & Storage: Store at -20°C or -80°C for 12 months. Avoid repeated freeze-thaw cycles.  
 Shipping: Shipping with blue ice.

### Antigen Details

Immunogen: Recombinant Protein: Yeast Actin.  
 Synonyms:  $\beta$ -actin;Yeast Actin;Y-actin;ABY1;END7;ACT\_YEAST  
 Biology Area: NFkB pathway,HLH,NFkB Pathway

**Inhibitor · Natural Compounds · Compound Libraries · Recombinant Proteins**

This product is for Research Use Only. Not for Human or Veterinary or Therapeutic Use

Tel:781-999-4286 E\_mail:info@targetmol.com Address:34 Washington Street,Wellesley Hills,MA 02481