

Anti-Beclin-1 Polyclonal Antibody

Product Details

Ig Type:	IgG
Reactivity:	Human,Mouse,Rat,Pig
Molecular Weight:	Theoretical: 50 kDa. Actual: 50 kDa.
Purification:	Protein A purified

Applications

1. Tissue/cell: rat brain tissue;4% Paraformaldehyde-fixed and paraffin-embedded; Antigen retrieval: citrate buffer (0.01M, pH6.0), Boiling bathing for 15 min; Blocking buffer (normal goat serum) at 37°C for 20 min; Incubation: Anti-Beclin-1 Polyclonal Antibody, Unconjugated (TMAB-00209) 1:200, overnight at 4°C; The secondary antibody was Goat Anti-Rabbit IgG, Cy3 conjugated used at 1:200 dilution for 40 minutes at 37°C. DAPI (5 µg/ml,blue) was used to stain the cell nucleus.

2. Sample: Pig

Primary: Anti-Beclin-1 (TMAB-00209) at 1:500 dilution;

3. Paraformaldehyde-fixed, paraffin embedded (Rat brain); Antigen retrieval by boiling in sodium citrate buffer (pH6.0) for 15 min; Block endogenous peroxidase by 3% hydrogen peroxide for 20 min; Blocking buffer (normal goat serum) at 37°C for 30 min; Antibody incubation with (Beclin 1) Polyclonal Antibody, Unconjugated (TMAB-00209) at 1:400 overnight at 4°C, followed by operating according to SP Kit (Rabbit) instructions and DAB staining.

4. Paraformaldehyde-fixed, paraffin embedded Mouse Cerebrum; Antigen retrieval by boiling in sodium citrate buffer (pH6.0) for 15 min; Antibody incubation with Beclin 1 Polyclonal Antibody, Unconjugated (TMAB-00209) at 1:800 overnight at 4°C, followed by conjugation to the secondary antibody and DAB staining.

5. Paraformaldehyde-fixed, paraffin embedded Human Cerebrum; Antigen retrieval by boiling in sodium citrate buffer (pH6.0) for 15 min; Antibody incubation with Beclin 1 Polyclonal Antibody, Unconjugated (TMAB-00209) at 1:800 overnight at 4°C, followed by conjugation to the secondary antibody and DAB staining.

6. Paraformaldehyde-fixed, paraffin embedded Mouse Spleen; Antigen retrieval by boiling in sodium citrate buffer (pH6.0) for 15 min; Antibody incubation with Beclin 1 Polyclonal Antibody, Unconjugated (TMAB-00209) at 1:800 overnight at 4°C, followed by conjugation to the secondary antibody and DAB staining.

7. Paraformaldehyde-fixed, paraffin embedded Rat Spleen; Antigen retrieval by boiling in sodium citrate buffer (pH6.0) for 15 min; Antibody incubation with Beclin 1 Polyclonal Antibody, Unconjugated (TMAB-00209) at 1:800 overnight at 4°C, followed by conjugation to the secondary antibody and DAB staining.

8. Paraformaldehyde-fixed, paraffin embedded Mouse Stomach; Antigen retrieval by boiling in sodium citrate buffer (pH6.0) for 15 min; Antibody incubation with Beclin 1 Polyclonal Antibody, Unconjugated (TMAB-00209) at 1:800 overnight at 4°C, followed by conjugation to the secondary antibody and DAB staining.

9. Paraformaldehyde-fixed, paraffin embedded Rat Stomach; Antigen retrieval by boiling in sodium citrate buffer (pH6.0) for 15 min; Antibody incubation with Beclin 1 Polyclonal Antibody, Unconjugated (TMAB-00209) at 1:800 overnight at 4°C, followed by conjugation to the secondary antibody and DAB staining.

10. Paraformaldehyde-fixed, paraffin embedded Human Fundus; Antigen retrieval by boiling in

Verified Activity:

sodium citrate buffer (pH6.0) for 15 min; Antibody incubation with Beclin 1 Polyclonal Antibody, Unconjugated (TMAB-00209) at 1:800 overnight at 4°C, followed by conjugation to the secondary antibody and DAB staining.

11. Paraformaldehyde-fixed, paraffin embedded Human Cervical Cancer; Antigen retrieval by boiling in sodium citrate buffer (pH6.0) for 15 min; Antibody incubation with Beclin 1 Polyclonal Antibody, Unconjugated (TMAB-00209) at 1:400 overnight at 4°C, followed by conjugation to the secondary antibody and DAB staining.

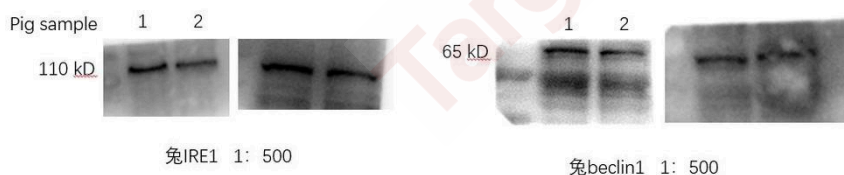
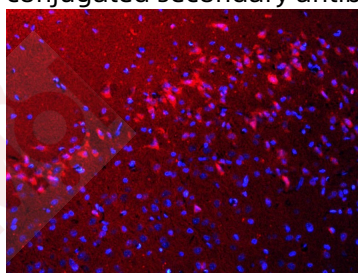
12. Paraformaldehyde-fixed, paraffin embedded Human Colon Cancer; Antigen retrieval by boiling in sodium citrate buffer (pH6.0) for 15 min; Antibody incubation with Beclin 1 Polyclonal Antibody, Unconjugated (TMAB-00209) at 1:400 overnight at 4°C, followed by conjugation to the secondary antibody and DAB staining.

13. Paraformaldehyde-fixed, paraffin embedded Human Colon; Antigen retrieval by boiling in sodium citrate buffer (pH6.0) for 15 min; Antibody incubation with Beclin 1 Polyclonal Antibody, Unconjugated (TMAB-00209) at 1:400 overnight at 4°C, followed by conjugation to the secondary antibody and DAB staining.

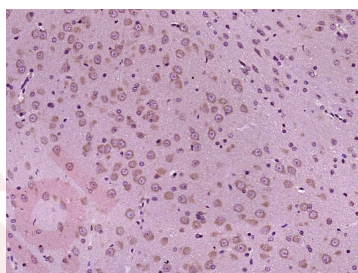
14. Paraformaldehyde-fixed, paraffin embedded Human Kidney; Antigen retrieval by boiling in sodium citrate buffer (pH6.0) for 15 min; Antibody incubation with Beclin 1 Polyclonal Antibody, Unconjugated (TMAB-00209) at 1:400 overnight at 4°C, followed by conjugation to the secondary antibody and DAB staining.

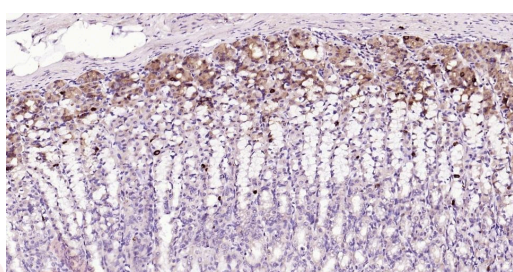
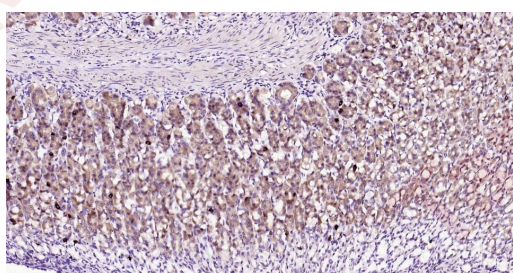
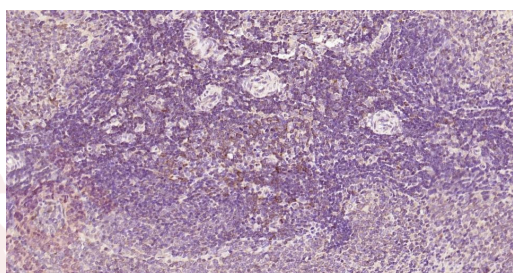
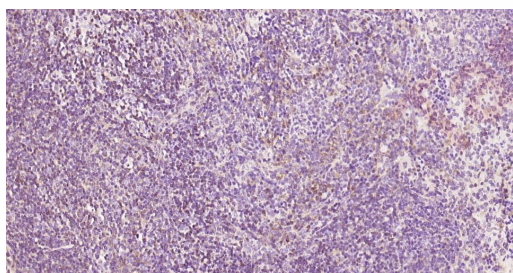
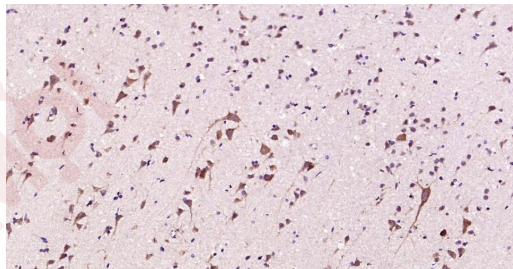
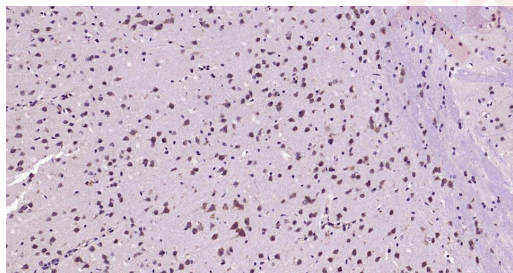
15. Paraformaldehyde-fixed, paraffin embedded Human Breast Cancer; Antigen retrieval by boiling in sodium citrate buffer (pH6.0) for 15 min; Antibody incubation with Beclin 1 Polyclonal Antibody, Unconjugated (TMAB-00209) at 1:800 overnight at 4°C, followed by conjugation to the secondary antibody and DAB staining.

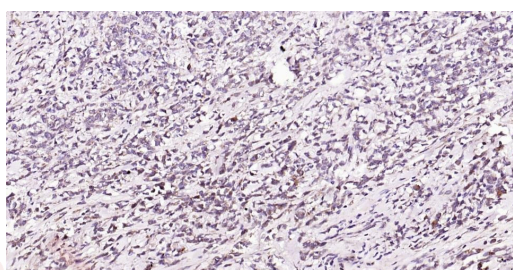
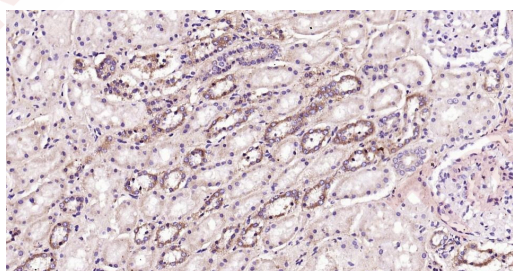
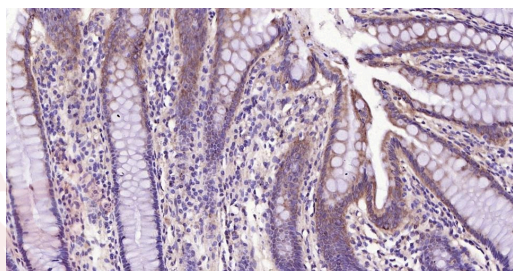
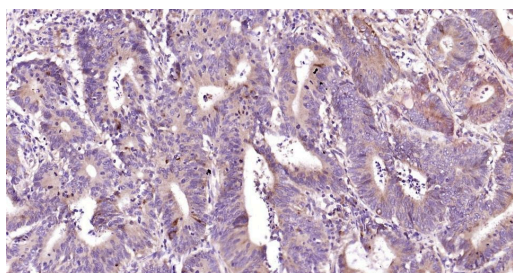
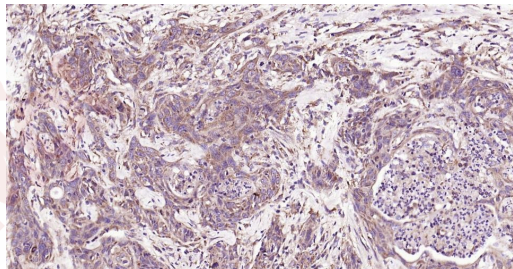
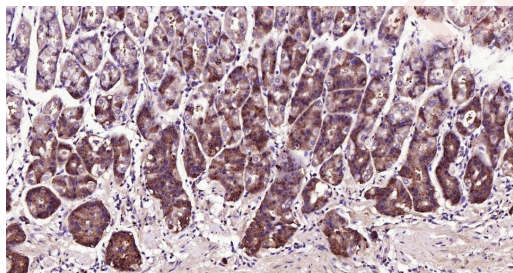
16. 25 µg total protein per Lane of various lysates probed with Beclin 1 polyclonal antibody, unconjugated (TMAB-00209) at 1:1000 dilution and 4°C overnight incubation. Followed by conjugated secondary antibody incubation at RT for 60 min.

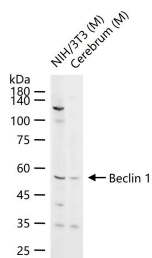


背景有点深, 考虑继续稀释









Application: IF,IHC-Fr,IHC-P,WB

Recommended WB: 1:500-2000; IHC-P: 1:200-1000; IHC-Fr: 1:200-1000; IF: 1:200-1000

Properties

Stability & Storage: Store at -20°C or -80°C for 12 months. Avoid repeated freeze-thaw cycles.

Shipping: Shipping with blue ice.

Antigen Details

Immunogen: KLH conjugated synthetic peptide: human BECN1

Antigen Species: Human

Gene ID: 8678

Uniprot ID: Q14457

Synonyms: Coiled-coil myosin-like BCL2-interacting protein;BECN1;GT197;Protein GT197;Beclin-1

Biology Area: Signal Transduction,Tumor suppressors,Autophagy,Tumor Suppressors,Autophagy and mitophagy,Host Immune Response

Research Background

Beclin 1 is the first identified mammalian gene to mediate autophagy and also has tumor suppressor and antiviral function. Autophagy, a process of bulk protein degradation through an autophagosomic lysosomal pathway, is important for differentiation, survival during nutrient deprivation, and normal growth control, and is often defective in tumor cells. Beclin 1 was originally isolated in a yeast two hybrid screen to identify Bcl 2 binding partners and maps to a tumor susceptibility locus on human chromosome 17q21 that is frequently monoallelically deleted in human breast, ovarian and prostate cancer. Beclin 1 encodes an evolutionarily conserved 52kDa coiled coil protein that is expressed in human muscle, epithelial cells and neurons.

Inhibitor · Natural Compounds · Compound Libraries · Recombinant Proteins

This product is for Research Use Only · Not for Human or Veterinary or Therapeutic Use

Tel:781-999-4286 E_mail:info@targetmol.com Address:34 Washington Street,Wellesley Hills,MA 02481